



Ormonde Terrace, St John's Wood, London, NW8

£550,000 *Share of Freehold*

1  1  1 

A spacious (600sq ft) one bedroom apartment, located on the top-floor of this popular development overlooking Primrose Hill. Not only is this development located on a peaceful, tree-lined street but it also benefits from communal heating and a day porter. The property has a modern, separate kitchen plus an 18ft reception room. Both St John's Wood High Street and Underground Station are less than a mile away with Regent's Park just 100 metres away. Offered for sale, with no onward chain.



Winkworth St John's Wood

020 7586 7001 | stjohnswood@winkworth.co.uk



KEY FEATURES

- Bedroom
- En-Suite Bathroom
- Separate Kitchen
- Reception Room
- Porterage
- Communal Heating
- Leasehold



MATERIAL INFO

Tenure: Share of Freehold

Lease Expiry Date: 01/01/2985

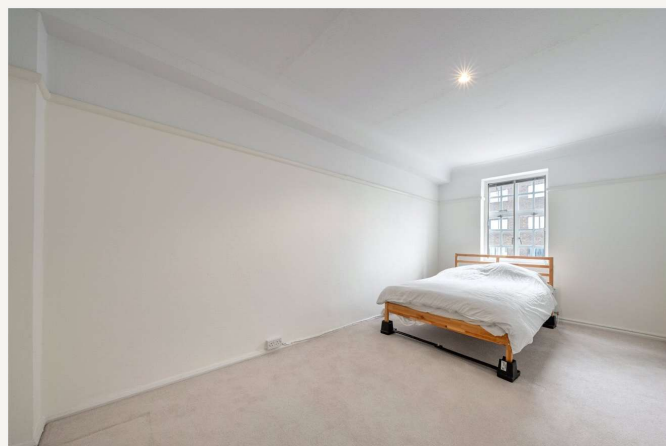
Service Charge: £9,188 per annum

Service Charge Note: Includes Heating, Hot Water and Reserve Fund Contribution

Ground Rent: £1 Annually (subject to increase)

Council Tax Band: D

EPC rating: E



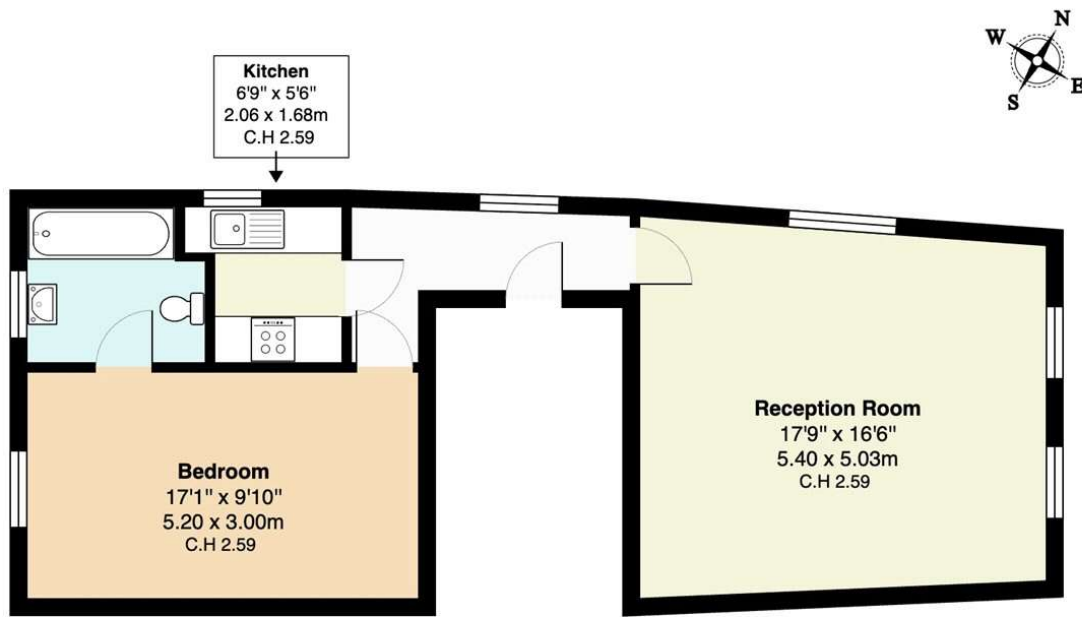


Score	Energy rating	Current	Potential
92+	A		
81-91	B		
69-80	C		70 C
55-68	D		
39-54	E	45 E	
21-38	F		
1-20	G		

For more information, scan the QR code or visit the link below



<https://www.winkworth.co.uk/sale/property/SJD230101>



3rd Floor

Ormonde Terrace, London, NW8

Total Gross Area: 600 ft² ... 55.8 m²

C.H : Ceiling Height

All measurements are approximate and for identification guideline purposes only, not to scale.
Compliant with the RICS code of measuring practice

Where no figures are shown, we have been unable to ascertain the information. All figures that are shown were correct at the time of printing.

Winkworth St John's Wood

020 7586 7001 | stjohnswood@winkworth.co.uk

Winkworth wishes to inform prospective buyers and tenants that these particulars are a guide and act as information only. All our details are given in good faith and believed to be correct at the time of printing but they don't form part of an offer or contract. No Winkworth employee has authority to make or give any representation or warranty in relation to this property. All fixtures and fittings, whether fitted or not are deemed removable by the vendor unless stated otherwise and room sizes are measured between internal wall surfaces, including furnishings.