



BRACEWELL ROAD, W10  
£2,383.33 PER MONTH

Winkworth





## BRACEWELL ROAD, W10

Spacious and Light-Filled Two-Bedroom Home Set Over Three Floors – Available August 2025

This delightful and exceptionally spacious two-bedroom property is arranged over three floors, offering a wonderful sense of openness and light throughout. Large windows in every room flood the space with natural light, creating a bright and welcoming atmosphere

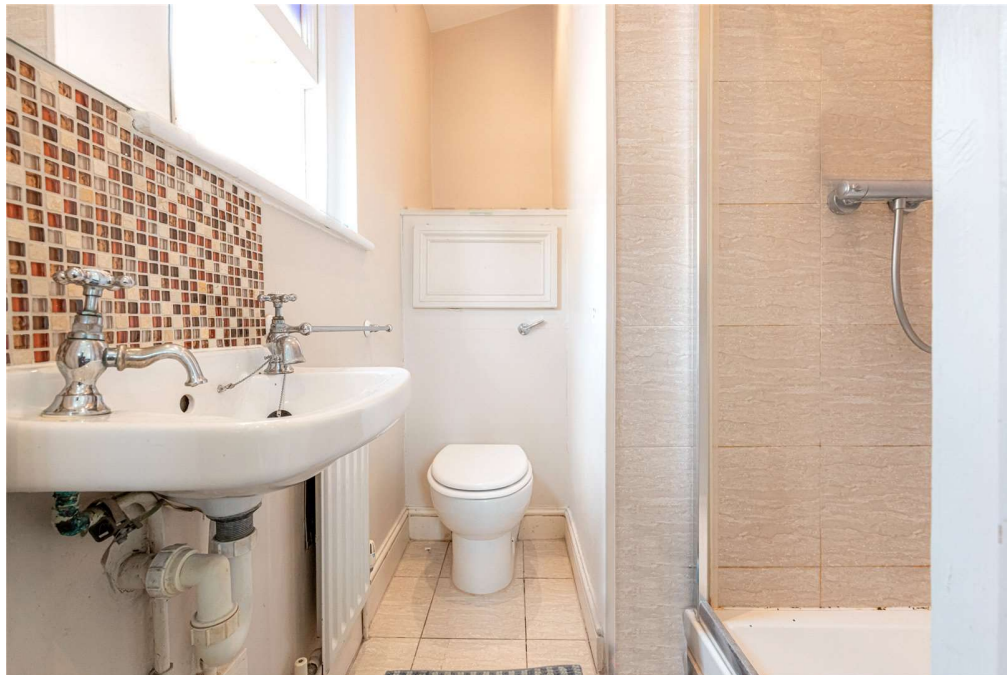
### LOCATION

Situated on a quiet and highly sought-after residential street in North Kensington, the property is just moments from the picturesque surroundings of Little Wormwood Scrubs — perfect for leisurely strolls and outdoor relaxation.

Convenient transport links are within walking distance, with both Ladbroke Grove and White City stations nearby, providing fast and easy access to Central London and beyond.



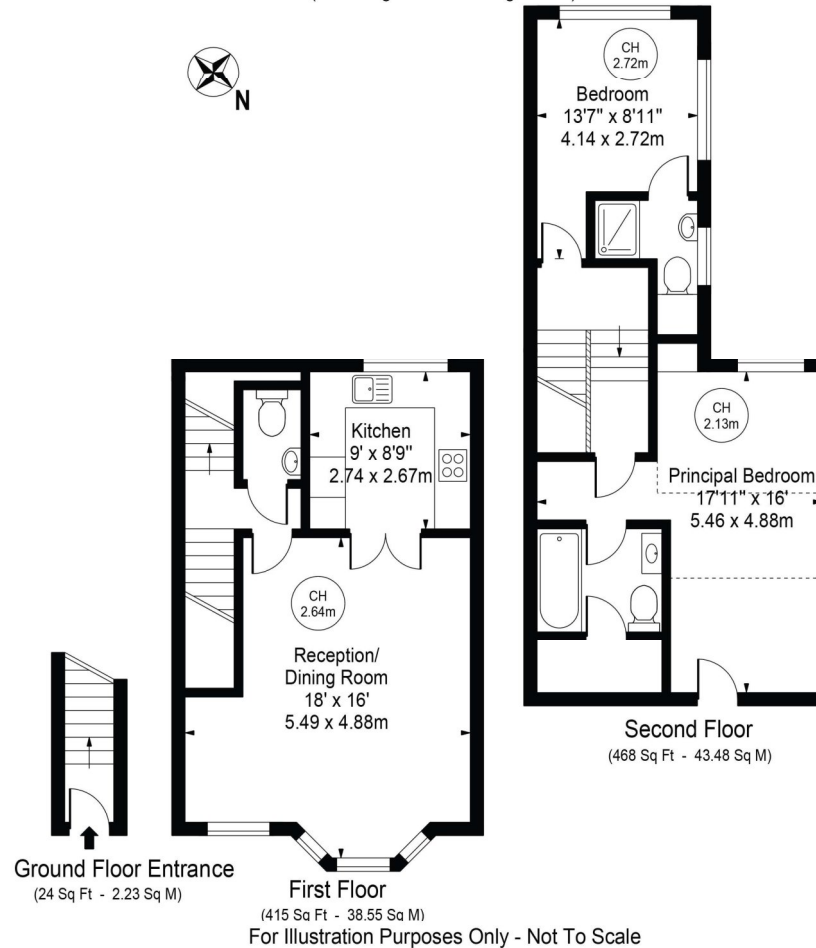




## Bracewell Road

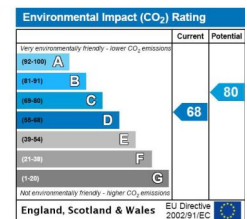
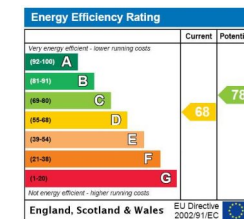
Approx. Total Internal Area 907 Sq Ft - 84.26 Sq M  
(Including Restricted Height Area)

Approx. Gross Internal Area 777 Sq Ft - 72.19 Sq M  
(Excluding Restricted Height Area)



This floor plan should be used as a general outline for guidance only and does not constitute in whole or in part an offer or contract. Any intending purchaser or lessee should satisfy themselves by inspection, searches, enquiries and full survey as to the correctness of each statement. Any areas, measurements or distances quoted are approximate and should not be used to value a property or be the basis of any sale or let.

Copyright Morriart Photography & Design LTD



North Kensington | 020 7792 5000 | northkensington@winkworth.co.uk

winkworth.co.uk

Winkworth wishes to inform prospective buyers and tenants that these particulars are a guide and act as information only. All our details are given in good faith and believed to be correct at the time of printing but they don't form part of an offer or contract. No Winkworth employee has authority to make or give any representation or warranty in relation to this property. All fixtures and fittings, whether fitted or not are deemed removable by the vendor unless stated otherwise and room sizes are measured between internal wall surfaces, including furnishings.

**Winkworth**