



OAKWOOD AVENUE, HERTFORDSHIRE, WD6  
**£700,000 FREEHOLD**

## A CHAIN FREE THREE BEDROOM DETACHED HOUSE WITH GARAGE IN SOUTH BOREHAMWOOD

**Borehamwood** | 020 8953 8899 | [borehamwood@winkworth.co.uk](mailto:borehamwood@winkworth.co.uk)





Winkworth

#### DESCRIPTION:

Having been in the same family ownership since its construction circa 1990, this rarely available three bedroom detached house with garage is offered for sale chain free.

Occupying a corner position the property is located in a highly desirable turning on the South side of Borehamwood, close to several "Good" and "Outstanding" Ofsted rated schools including Yavneh and Monksmead and a short walk to Borehamwood High Street and Thameslink station.

#### AT A GLANCE

- Three Bedrooms
- Chain Free
- South Borehamwood
- 1091 Square Feet
- Garage
- Gas Central Heating
- Corner Plot
- Part Double Glazed



Winkworth



Winkworth







Approximate Gross Internal Area = 101.4 sq m / 1091 sq ft  
(Excluding Garage)

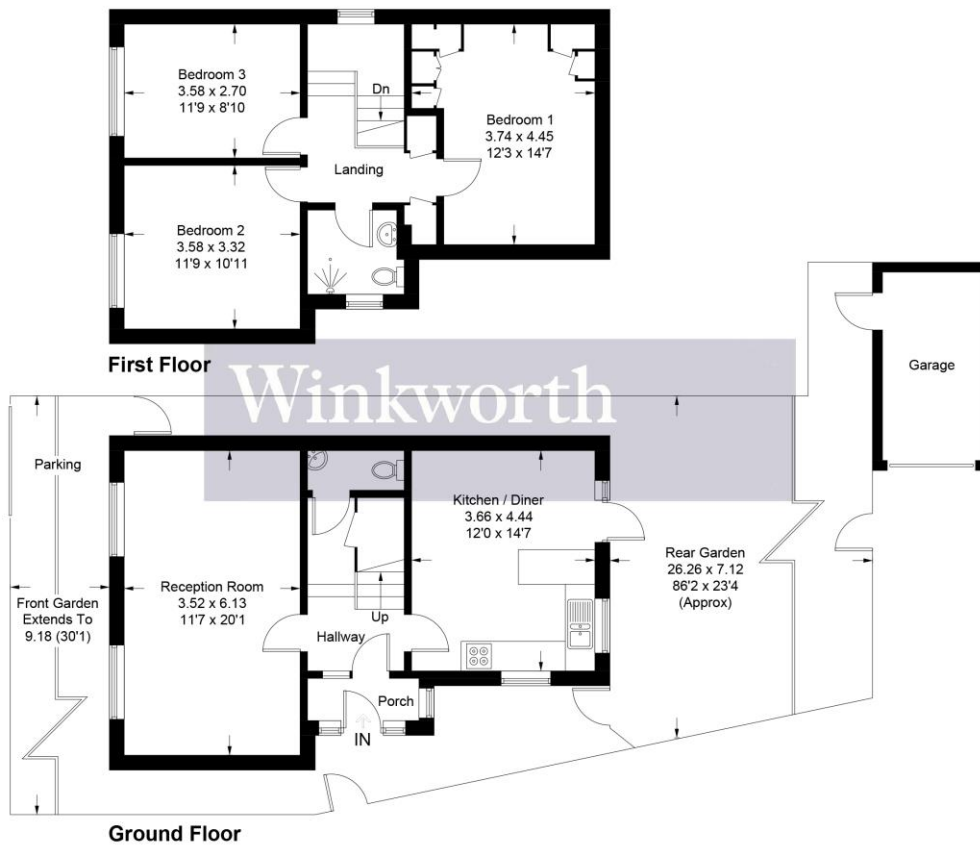


Illustration for identification purposes only, measurements are approximate,  
not to scale. Winkworth © 2025 (ID1206298)

This floorplan is for illustration purposes only and is not to scale. The position and size of doors, windows, appliances and other features are approximate.

Score	Energy rating	Current	Potential
92+	A		
81-91	B		83 B
69-80	C		
55-68	D	63 D	
39-54	E		
21-38	F		
1-20	G		

**Tenure:** Freehold

**Term:** 0 year and 0 months

**Service Charge:** £0 per annum

**Ground Rent:** £ 0 Annually (subject to increase)

**Council Tax Band:** F

Where no figures are shown, we have been unable to ascertain the information. All figures that are shown were correct at the time of printing.