



YEWFIELD ROAD, LONDON, NW10

**£765,000 FREEHOLD**

**A WONDERFUL AND FULLY EXTENDED FOUR BEDROOM,  
THREE BATHROOM, FAMILY HOME CLOSE TO LOCAL  
AMENITIES, TRANSPORT LINKS AND SCHOOLS.**

Kensal Rise & Queens Park | 0208 960 4947 | [kensalrise@winkworth.co.uk](mailto:kensalrise@winkworth.co.uk)

**Winkworth**

[winkworth.co.uk](http://winkworth.co.uk)

See things differently



### LOCATION:

Yewfield Road is well situated for access to the Jubilee line, approx. 10 minutes' walk to Dollis Hill, meaning that Central London and the City will be within a 20-30 minute journey. With great schools such as Leopold Primary and St Joseph's Primary this house is perfect for a young family. If it's green spaces you're after then look no further than Roundwood Park situated less than 1/4 mile from the front door.



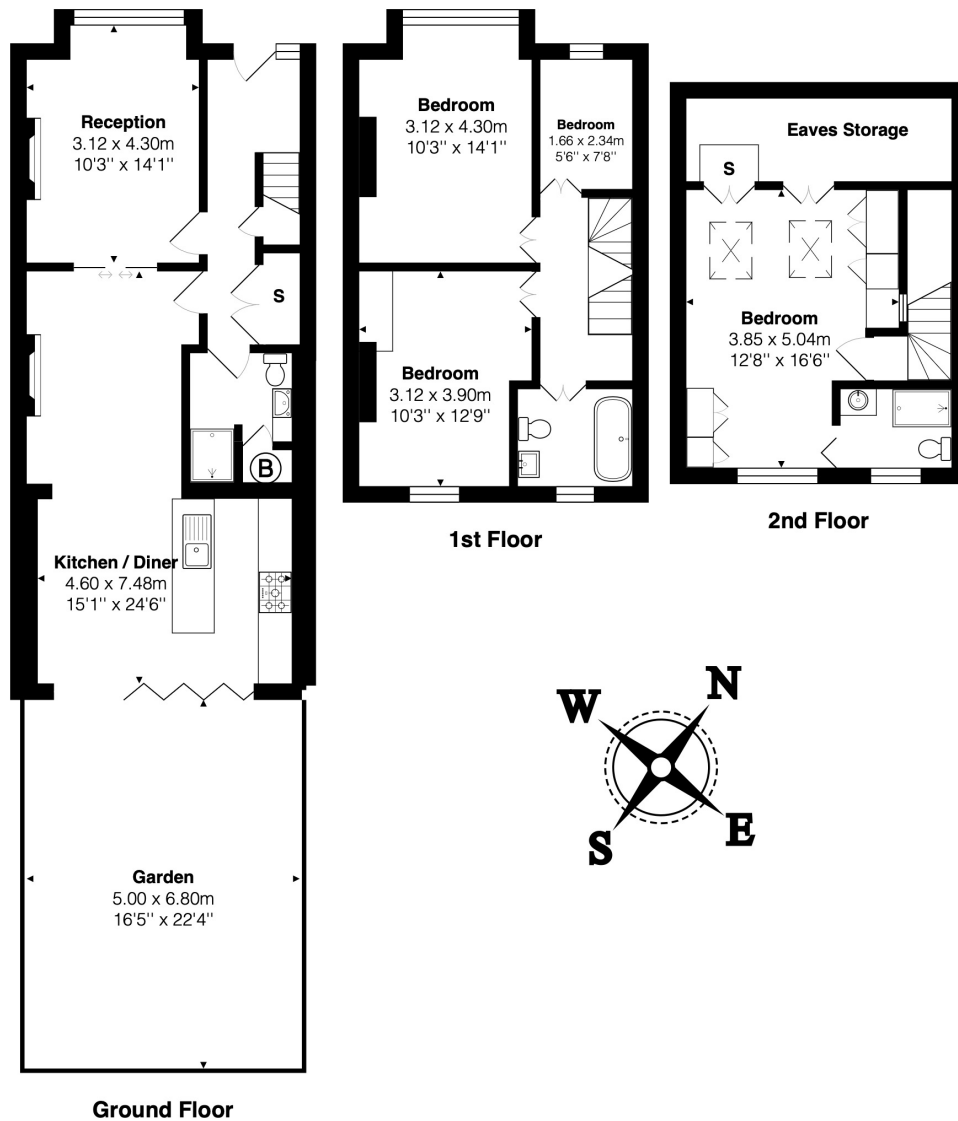


## DESCRIPTION:

This stunning and contemporary home is certainly one of the best. Spread over three floors, there is a fantastic loft conversion which is the principle bedroom with en-suite shower room and fitted wardrobes. On the first floor, there are three bedrooms, two of which are generous sized doubles. The family bathroom is a well-appointed three piece tiled suite. On the ground floor, there is a lovely front facing reception room with high ceilings. For guests, there is an additional guest WC and shower room off the entrance hallway. Finally, the property has been extended to the rear, which is now a large open plan kitchen and dining area. The kitchen is of high quality with fully integrated appliances. Full height sliding doors provide direct access on to the South-West facing garden. This is a great entertaining area and sun trap.

No expense has been spared on this wonderful home and viewing therefore comes highly recommended.





Total Area: 119.5 m<sup>2</sup> ... 1286 ft<sup>2</sup> (excluding garden, eaves storage)

All measurements are approximate and for display purposes only

This floorplan is for illustration purposes only and is not to scale. The position and size of doors, windows, appliances and other features are approximate.

Kensal Rise & Queens Park | 0208 960 4947 | kensalrise@winkworth.co.uk

**Winkworth**

winkworth.co.uk

See things differently

winkworth wishes to inform prospective buyers and tenants that these particulars are a guide and act as information only. All our details are given in good faith and believed to be correct at the time of printing but they don't form part of an offer or contract. No Winkworth employee has authority to make or give any representation or warranty in relation to this property. All fixtures and fittings, whether fitted or not are deemed removable by the vendor unless stated otherwise and room sizes are measured between internal wall surfaces, including furnishings.