



East End Road, N3

£550,000 *Share of Freehold*

3  1  1 

Offered for sale, is this well presented three bedroom first floor flat, set within a popular mansion block on East End Road. The property is presented in good decorative order, and benefits from having over 1000 ft/sq of living space - comprising of a modern fitted kitchen, family bathroom and a 15 ft reception room. Further benefits include a balcony, and usage of a well maintained communal garden to the rear of block.

KEY FEATURES

- Three bedrooms
- Balcony
- Communal garden
- Gas central heating
- Double glazing
- Share of freehold



Finchley

020 8349 3388 | finchley@winkworth.co.uk

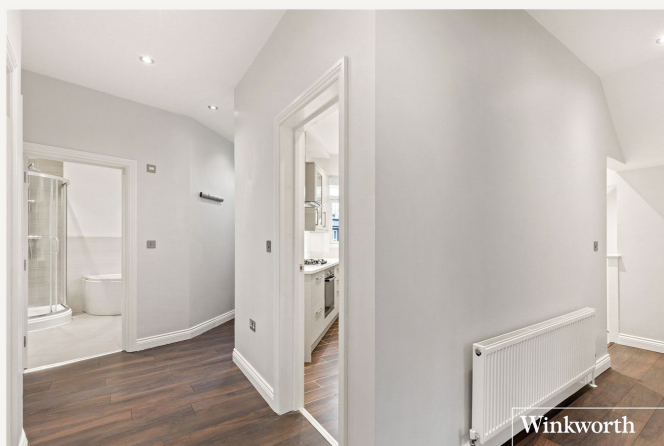
Winkworth

for every step...



The property is also well located for Stephens House & Gardens, Finchley Central tube station and local shopping facilities. This must see property is being sold on a chain free basis with the share of freehold.

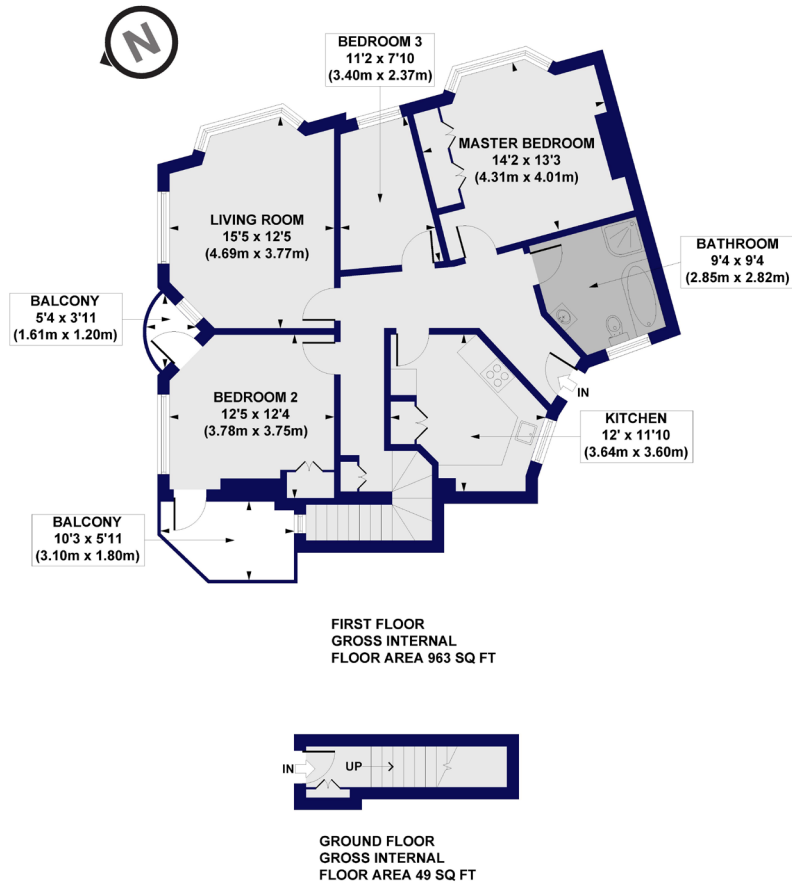




MATERIAL INFO

Tenure: Share of Freehold
Service Charge: £2678.20 per annum
Council Tax Band: D
EPC rating: C

Stanhope Court, East End Road, N3
Approx. Gross Internal Floor Area 1012 sq. ft / 94.03 sq. m

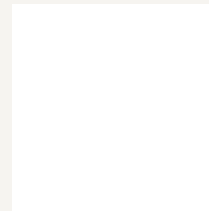


All measurements of walls, doors, windows, fittings and appliances, including their size and location, are shown as standard sizes and do not constitute any warranty or representation by the seller, their agent or CP Creative. Any intending purchaser must satisfy himself by inspection or otherwise as to the correctness of the information contained in these plans. This plan is for illustrative purposes only and should be used as such by any prospective purchasers.

Winkworth

Score	Energy rating	Current	Potential
92+	A		
81-91	B		
69-80	C	76 C	83 B
55-68	D		
39-54	E		
21-38	F		
1-20	G		

For more information, scan the QR code or visit the link below



<https://www.winkworth.co.uk/sale/property/FIN250435>

Where no figures are shown, we have been unable to ascertain the information. All figures that are shown were correct at the time of printing.

Finchley

020 8349 3388 | finchley@winkworth.co.uk

Winkworth

for every step...

Winkworth wishes to inform prospective buyers and tenants that these particulars are a guide and act as information only. All our details are given in good faith and believed to be correct at the time of printing but they don't form part of an offer or contract. No Winkworth employee has authority to make or give any representation or warranty in relation to this property. All fixtures and fittings, whether fitted or not are deemed removable by the vendor unless stated otherwise and room sizes are measured between internal wall surfaces, including furnishings.