



MAITLAND CLOSE, GREENWICH, LONDON, SE10
GUIDE PRICE £400,000 - £425,000 LEASEHOLD

A WELL-PRESENTED TWO BEDROOM FLAT WHICH IS PERFECTLY LOCATED IN WEST GREENWICH, JUST MOMENTS FROM MAINLINE RAIL AND DLR. MEASURING CIRCA 667 SQ FT!

Greenwich | 02030533033 | greenwich@winkworth.co.uk

Winkworth

winkworth.co.uk

See things differently



DESCRIPTION:

A well-presented, two bedroom flat which is perfectly located in West Greenwich, just moments from mainline rail and DLR. Measuring circa 667 sq ft!

In good condition throughout, the property comprises a 14ft reception room and a well fitted modern kitchen. There are two double bedrooms, bathroom and a separate WC. Added benefits include ample storage, double glazing and gas central heating. The property is also offered chain free.

As mentioned, the location is excellent as the flat sits on the edge of the Ashburnham Triangle, meaning this would make a fantastic BUY TO LET investment. Along with mainline rail, the town centre is also just a few minutes away, which offers a wide array of shops and restaurants, along with riverboat service, the immensely popular Greenwich Market and of course The Royal Park with its Observatory.

AT A GLANCE

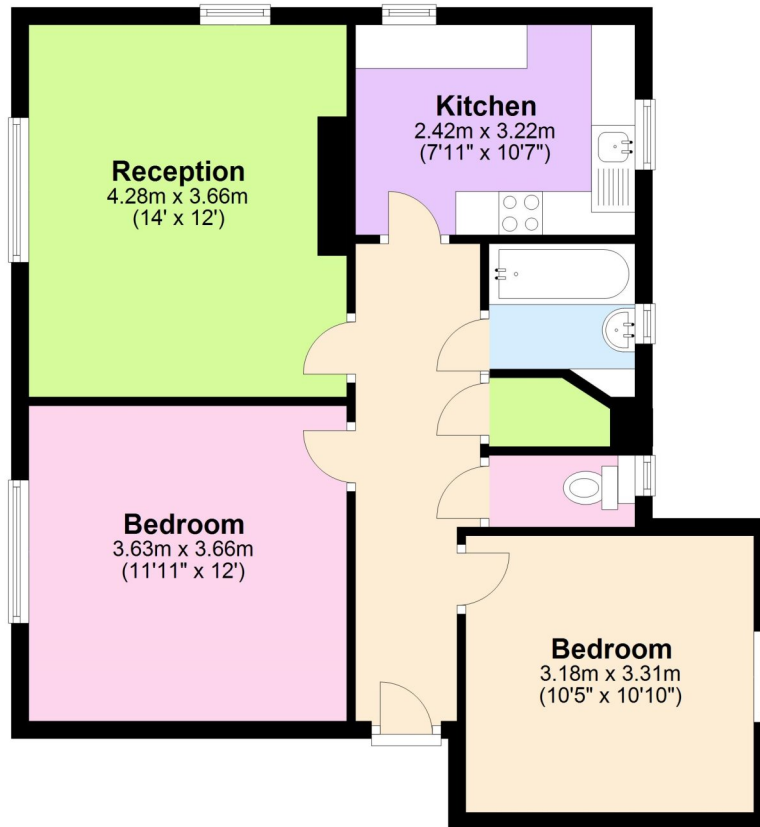
- two bedroom flat
- 2nd floor
- good condition
- circa 667 sq ft
- double glazed
- West Greenwich location
- seconds from rail and DLR
- 14ft reception room
- bathroom and sep WC
- close to town centre and park





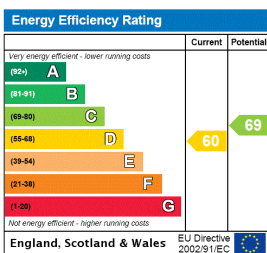
Second Floor

Approx. 62.0 sq. metres (667.2 sq. feet)



Total area: approx. 62.0 sq. metres (667.2 sq. feet)

This floorplan is for illustration purposes only and is not to scale. The position and size of doors, windows, appliances and other features are approximate.



Greenwich | 02030533033 | greenwich@winkworth.co.uk

Winkworth

winkworth.co.uk

See things differently

Winkworth wishes to inform prospective buyers and tenants that these particulars are a guide and act as information only. All our details are given in good faith and believed to be correct at the time of printing but they don't form part of an offer or contract. No Winkworth employee has authority to make or give any representation or warranty in relation to this property. All fixtures and fittings, whether fitted or not are deemed removable by the vendor unless stated otherwise and room sizes are measured between internal wall surfaces, including furnishings.