



IMPERIAL SQUARE, SW6 £1,250,000 FREEHOLD

A unique three bedroom end of terrace cottage located in Imperial Square – a hidden village-like cul-de-sac just off the Kings Road.

Fulham & Parsons Green | 020 7731 3388 | fulham@winkworth.co.uk

Winkworth

for every step...

winkworth.co.uk



DESCRIPTION:

The property offers superb living space on the ground floor, with an open plan kitchen, dining space and reception area. On the first floor you will find the master bedroom and ensuite shower room with doors that open out to a beautiful roof terrace. There are two further bedrooms on this floor with ample storage which are served by a family bathroom with a separate shower and bath. The house benefits from an unusually large picket fenced front garden.

Imperial Square is a little-known oasis of greenery forming a quiet cul-de-sac tucked just off the Kings Road. Initially built for the gas workers in 1880, the design and village feel are unique in the area. The cottages change hands very little and thus this is a very rare opportunity to secure one. The end of terrace position means that this cottage occupies a significantly larger plot than the others.

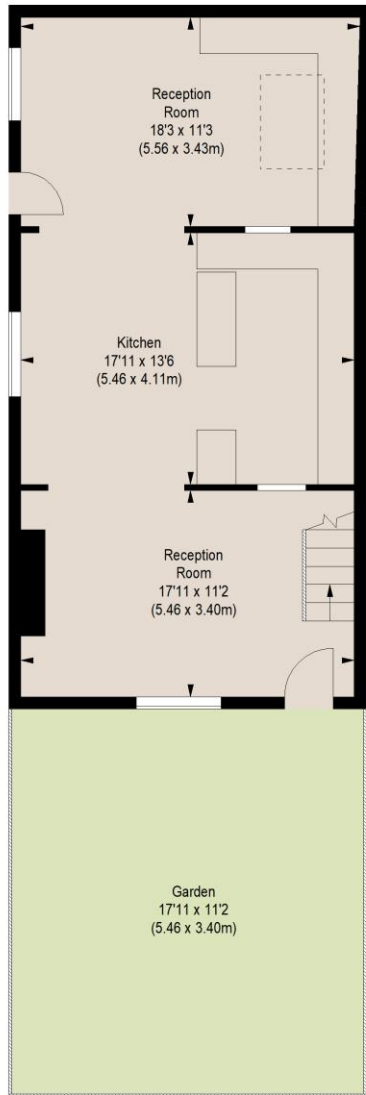
The square is positioned between Parsons Green and Chelsea and is a short walk from Fulham Broadway (district line), Imperial Wharf (overground train), and Chelsea Wharf (riverboat). There are an extensive array of shops and amenities nearby on Kings Road, Parsons Green, Fulham Broadway and Imperial Wharf.



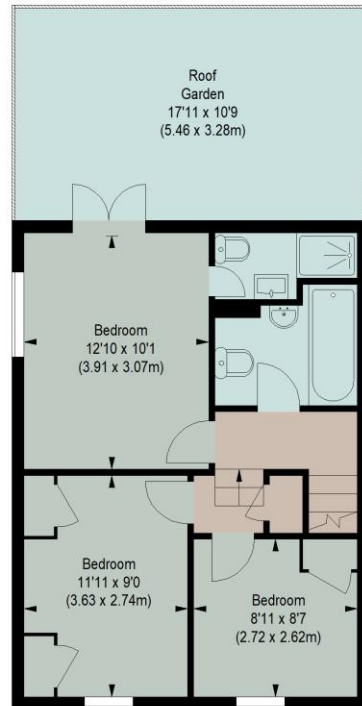


IMPERIAL SQUARE

Approximate gross internal area
1080 sq ft / 100.33 sq m



GROUND FLOOR



FIRST FLOOR

The floor plan is not to scale and measurements and areas shown are approximate and therefore should be used for illustrative purposes only. The plan has been prepared in accordance with the RICS code of Measuring Practice and whilst we have confidence in the information produced, it must not be relied on. If there is any aspect of particular importance, you should carry out or commission your own inspection of the property.

This floorplan is for illustration purposes only and is not to scale. The position and size of doors, windows, appliances and other features are approximate.

Fulham & Parsons Green | 020 7731 3388 | fulham@winkworth.co.uk

Winkworth

for every step...

winkworth.co.uk

Winkworth wishes to inform prospective buyers and tenants that these particulars are a guide and act as information only. All our details are given in good faith and believed to be correct at the time of printing but they don't form part of an offer or contract. No Winkworth employee has authority to make or give any representation or warranty in relation to this property. All fixtures and fittings, whether fitted or not are deemed removable by the vendor unless stated otherwise and room sizes are measured between internal wall surfaces, including furnishings.