



London Road, SE23

£325,000 *Leasehold*



****GUIDE PRICE £325,000 - £350,000****

This charming two-bedroom, two-bathroom flat offers modern living in the desirable SE23 area. The flat features spacious rooms filled with natural light and includes a well-equipped kitchen and contemporary bathrooms. The primary bedroom boasts an en suite bathroom, providing added convenience and privacy.



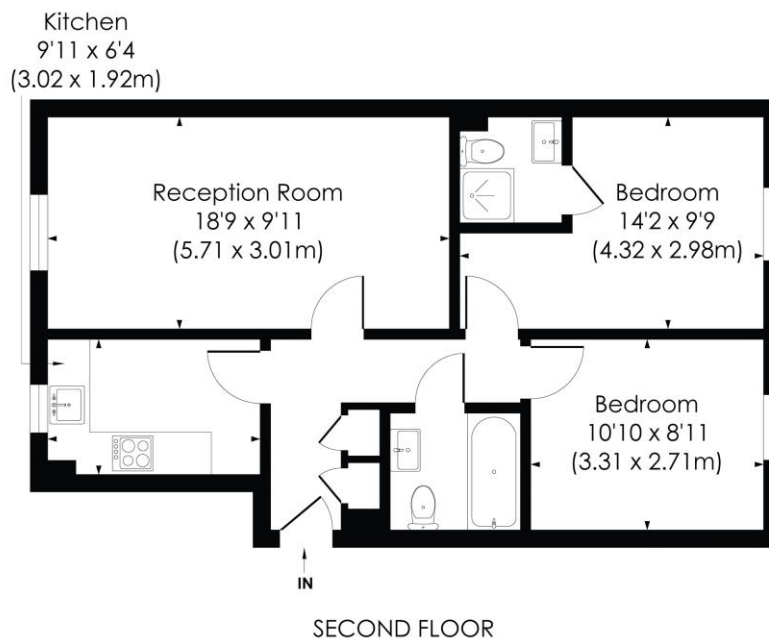
Forest Hill

| foresthill@winkworth.co.uk

LONDON ROAD, SE23

Approx.Gross Internal Floor Area

616 Sq. ft/57.25 Sq. m



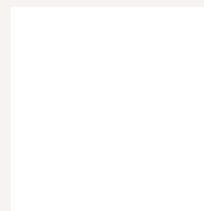
pixangle
PROPERTY MARKETING

© Pixangle Property Marketing Ltd. info @pixangle.com Tel: 0208 870 2118
This floor plan has been prepared for illustration purposes only, in accordance with the latestRICS code of measuring and is not to scale.
All measurements and areas are approximate and whilst every effort has been made to ensure the accuracy of the plan contained here, no responsibility is taken for any error, omission or misstatement.

MATERIAL INFO

For more information, scan the QR code or visit the link below

Tenure: Leasehold



<https://www.winkworth.co.uk/sale/property/FHL240317>

Where no figures are shown, we have been unable to ascertain the information. All figures that are shown were correct at the time of printing.

Forest Hill

| foresthill@winkworth.co.uk