



FLAT 5, HAMLET HOUSE, LONDON ROAD, LONDON, SE23
£325,000 LEASEHOLD

Forest Hill | | foresthill@winkworth.co.uk



DESCRIPTION:

****GUIDE PRICE £325,000 - £350,000****

This charming two-bedroom, two-bathroom flat offers modern living in the desirable SE23 area. The flat features spacious rooms filled with natural light and includes a well-equipped kitchen and contemporary bathrooms. The primary bedroom boasts an en suite bathroom, providing added convenience and privacy.





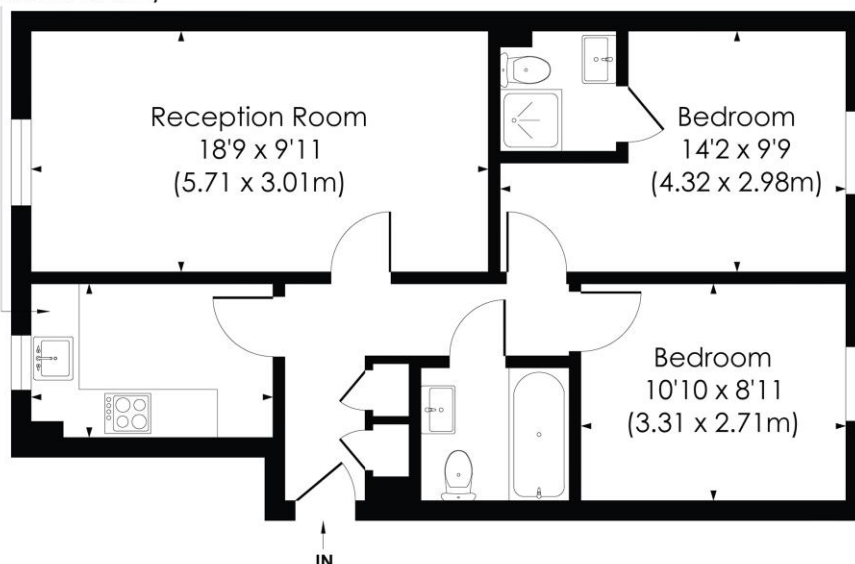
LONDON ROAD, SE23

Approx.Gross Internal Floor Area

616 Sq. ft/57.25 Sq. m



Kitchen
9'11 x 6'4
(3.02 x 1.92m)

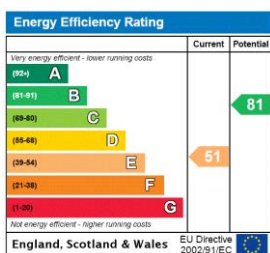


SECOND FLOOR

pixangle
PROPERTY MARKETING

© Pixangle Property Marketing Ltd. info @pixangle.com Tel: 0208 870 2118
This floor plan has been prepared for illustration purposes only, in accordance with the latest RICS code of measuring and is not to scale.
All measurements and areas are approximate and whilst every effort has been made to ensure the accuracy of the plan contained here, no responsibility is taken for any error, omission or misstatement.

This floorplan is for illustration purposes only and is not to scale. The position and size of doors, windows, appliances and other features are approximate.



Tenure: Leasehold

Term: 102 year and 0 months

Service Charge: £3514 per annum

Ground Rent: £ 0 Annually (subject to increase)

Council Tax Band: D

Where no figures are shown, we have been unable to ascertain the information. All figures that are shown were correct at the time of printing.