



OCTAVE HOUSE, BOTOLPH ALLEY, LONDON, EC3R
£2,200 PER MONTH

**CHIC ONE BEDROOM PROPERTY LOCATED
 150M FROM MONUMENT STATION ON THIS
 PRETTY WALKWAY IN THE CITY.**

Shoreditch | 020 7749 7650 | shoreditch@winkworth.co.uk

Winkworth

Tenant Fees Apply: Details of fees for tenant referencing, tenancy agreement admin fees and renewal fees are available on the Winkworth website and the link can be found with the displayed rent for the property. Tenants should ensure they are fully conversant with these upfront fees and other costs that are involved at the outset of the tenancy before making an offer to rent and your local Winkworth office will provide written details upon request.

winkworth.co.uk

See things differently



DESCRIPTION:

A chic one bedroom property located 150m from Monument station on this pretty walkway in the city. The property comprises an open plan kitchen/living area with tasteful fixtures and fittings, well presented bathroom suite and bedroom with ample storage.

The apartment benefits from lift access and outstanding transport links; the stations of Monument, Fenchurch Street, Tower Hill and Bank are within a close reach as are Leadenhall Market and The Thames. London Bridge, Borough Market and the trendy bars and restaurants of Shoreditch are also within range.

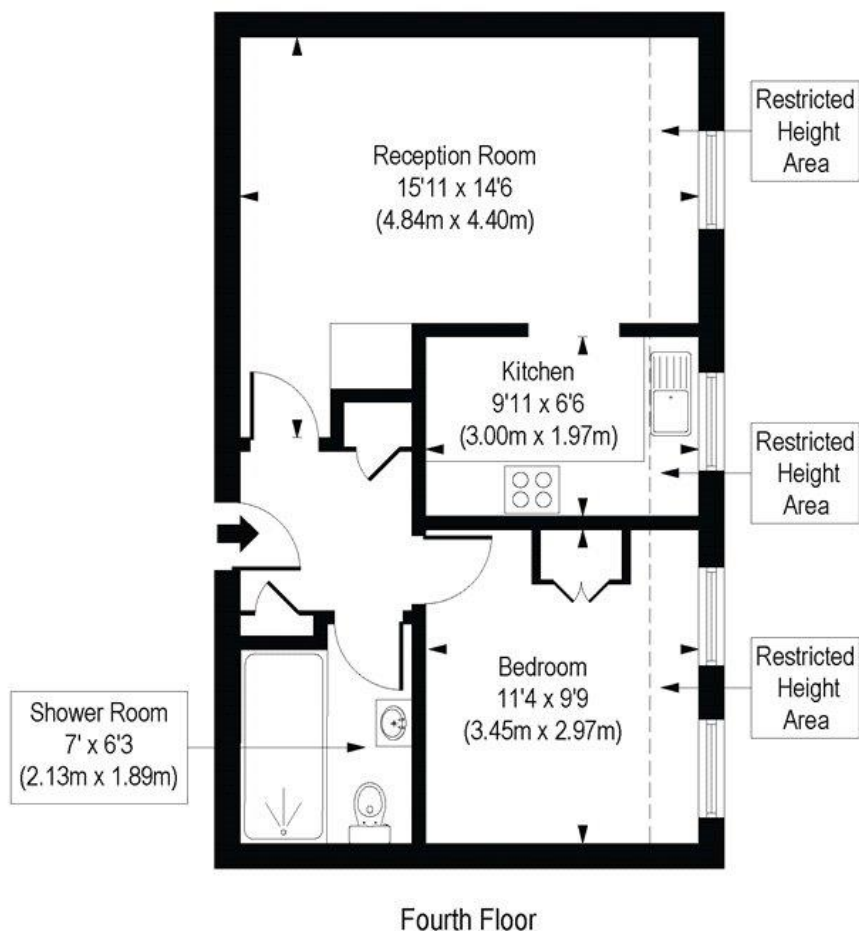
Winkworth



Winkworth

Octave House, Botolph Alley, EC3R

Approx. Gross Internal Floor Area 481 sq. ft / 44.65 sq. m (Including Restricted Height Area)
Approx. Gross Internal Floor Area 430 sq. ft / 39.93 sq. m (Excluding Restricted Height Area)



COMPLIANT WITH RICS CODE OF MEASURING PRACTICE. Floorplan is for illustrative purposes only and is not to scale. Every attempt has been made to ensure the accuracy of the floorplan shown, however all measurements, fixtures, fittings and data shown are an approximate interpretation for illustrative purposes only. Liability for errors, omission or mis-statement through negligence or otherwise is hereby excluded.

This floorplan is for illustration purposes only and is not to scale. The position and size of doors, windows, appliances and other features are approximate.

Shoreditch | 020 7749 7650 | shoreditch@winkworth.co.uk

Winkworth

winkworth.co.uk

See things differently

Winkworth wishes to inform prospective buyers and tenants that these particulars are a guide and act as information only. All our details are given in good faith and believed to be correct at the time of printing but they don't form part of an offer or contract. No Winkworth employee has authority to make or give any representation or warranty in relation to this property. All fixtures and fittings, whether fitted or not are deemed removable by the vendor unless stated otherwise and room sizes are measured between internal wall surfaces, including furnishings.