



MARGARETS BUILDINGS, BA1
£175,000 LEASEHOLD

Winkworth



MARGARETS BUILDINGS, BA1

A top floor studio apartment with plenty of potential

Entrance hall | living / bedroom | separate kitchen | bathroom. Residence parking permit available.

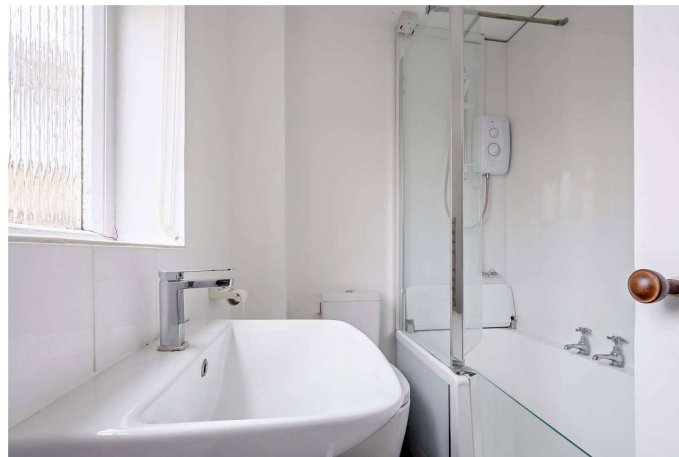
Situated between The Royal Crescent and The Circus Margaret's Buildings is a pedestrian street with underpants shops, restaurants, cafes and art galleries.

A stone's throw to Royal Victoria Park, this 55 acres green space acts as your garden with BBQ tables and other places to relax.

The apartment is on the top floor, there is a private entrance hall which leads into a large living space, there are 3 windows overlooking the street and allowing in a lot of light.

There is a separate kitchen off the living space and a bathroom off the entrance hall.

Resident's parking permit available.



Tenure: Leasehold

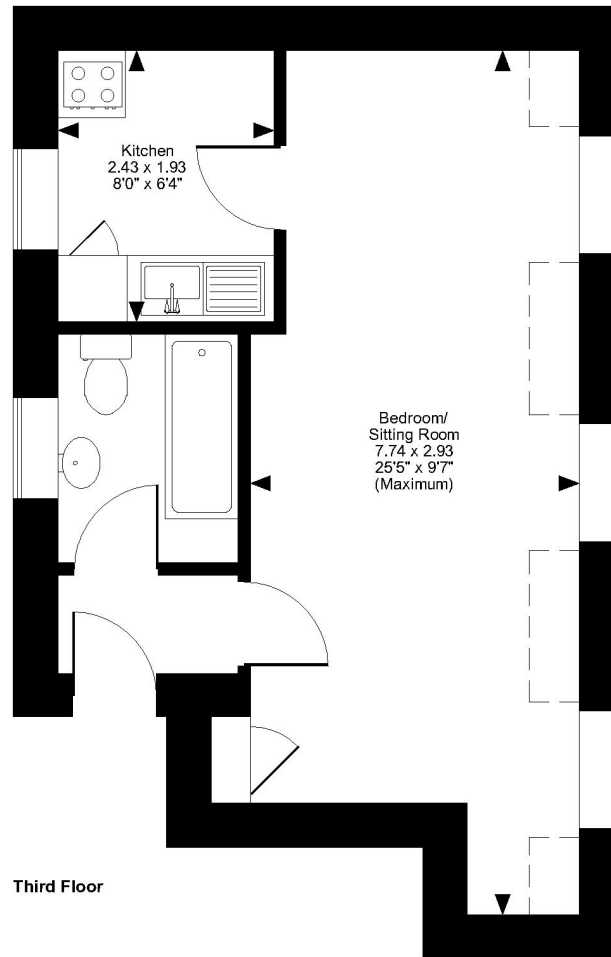
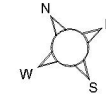
Service charge: TBC

Council tax: TBC

Services, electricity, main water and drainage



Margarets Buildings, Bath, Somerset
Approximate Gross Internal Area
312 Sq Ft/29 Sq M



FOR ILLUSTRATIVE PURPOSES ONLY - NOT TO SCALE

The position & size of doors, windows, appliances and other features are approximate only.

--- Denotes restricted head height

© ehouse. Unauthorised reproduction prohibited. Drawing ref. dig/8470170/DMS

Bath | 01225 829 000 | bath@winkworth.co.uk

winkworth.co.uk

Winkworth wishes to inform prospective buyers and tenants that these particulars are a guide and act as information only. All our details are given in good faith and believed to be correct at the time of printing but they don't form part of an offer or contract. No Winkworth employee has authority to make or give any representation or warranty in relation to this property. All fixtures and fittings, whether fitted or not are deemed removable by the vendor unless stated otherwise and room sizes are measured between internal wall surfaces, including furnishings.

Winkworth