



GUNTHORPE STREET, E1
£3,250 PER MONTH

A SPECTACULAR TWO BEDROOM, TWO BATHROOM APARTMENT IN THE BOUTIQUE AND HIGHLY SOUGHT AFTER LONDON

Shoreditch | 020 7749 7650 | shoreditch@winkworth.co.uk

Winkworth

for every step...

winkworth.co.uk



DESCRIPTION:

A spectacular two bedroom, two bathroom apartment in the boutique and highly sought after London Square development. The property offers luxury living with high quality fixtures and fittings. Comprising a large entrance hall leading into a spacious reception room, open plan kitchen with high quality appliances, two large double bedrooms and ensuite, guest bathroom and a private winter garden. The development

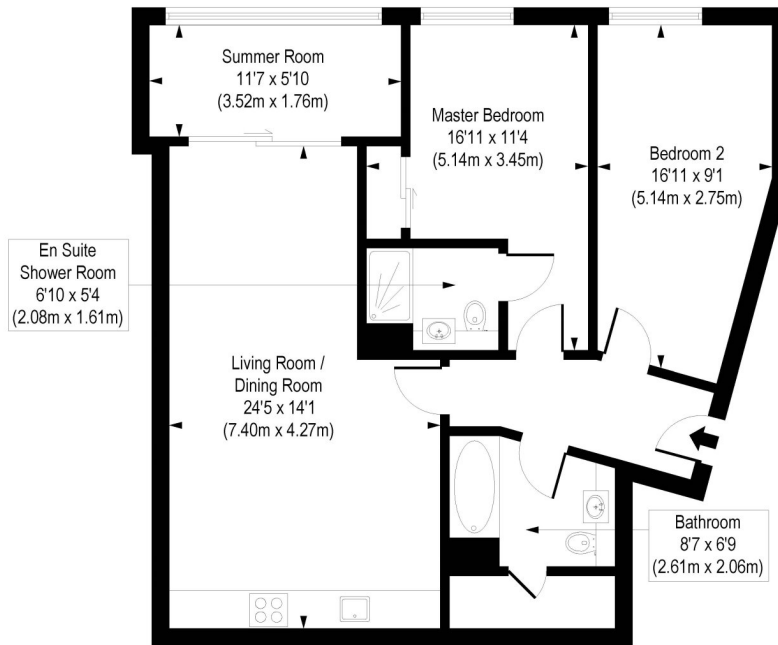
ACCOMMODATION

2 Bedrooms, 2 Bathrooms, Flat/Apartment,
Balcony, Modern, Porter/Concierge



Gunthorpe Street, E1

Approx. Gross Internal Floor Area 882 sq. ft / 81.98 sq. m



Second Floor

COMPLIANT WITH RICS CODE OF MEASURING PRACTICE. Floorplan is for illustrative purposes only and is not to scale. Every attempt has been made to ensure the accuracy of the floorplan shown, however all measurements, fixtures, fittings and data shown are an approximate interpretation for illustrative purposes only. Liability for errors, omissions or mis-statement through negligence or otherwise is hereby excluded.

This floorplan is for illustration purposes only and is not to scale. The position and size of doors, windows, appliances and other features are approximate.

Shoreditch | 020 7749 7650 | shoreditch@winkworth.co.uk

Winkworth

for every step...

winkworth.co.uk

Winkworth wishes to inform prospective buyers and tenants that these particulars are a guide and act as information only. All our details are given in good faith and believed to be correct at the time of printing but they don't form part of an offer or contract. No Winkworth employee has authority to make or give any representation or warranty in relation to this property. All fixtures and fittings, whether fitted or not are deemed removable by the vendor unless stated otherwise and room sizes are measured between internal wall surfaces, including furnishings.