



FRANCISCAN ROAD, LONDON, SW17
£575,000 SHARE OF FREEHOLD

TWO BEDROOM, CHARACTERFUL MAISONETTE CLOSE TO TOOTING BEC COMMON

Tooting | 020 8767 5221
17 Upper Tooting Road, London, SW17 7TS

Winkworth

for every step...

winkworth.co.uk

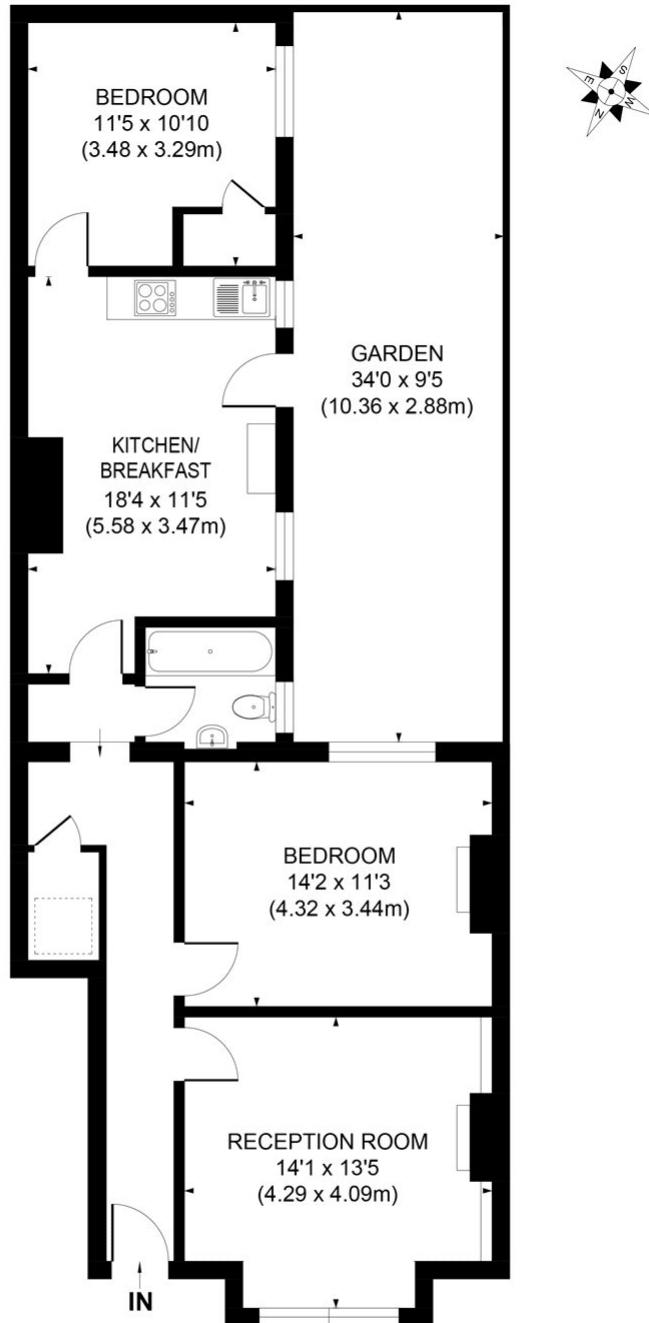




DESCRIPTION

A beautifully presented two double bedroom ground floor flat located in a sort after area of Tooting Bec and situated close to Tooting Bec common. The property boasts many original features. On entering there is an exceptional reception room, two well proportioned double bedrooms and a larger than average kitchen/breakfast room and a separate bathroom. The kitchen leads out onto a wonderful private rear garden which is mainly laid to patio but offers a wonderful entertaining space.

Franciscan Road is well situated for both Tooting Bec and Tooting Broadway. A very popular area with good transport links. Tooting Bec Common and Balham High Road are also a short stroll away.



APPROX. GROSS INTERNAL FLOOR AREA 853 SQ. FT / 79.21 SQ. M

Illustration for identification purpose only, not to scale
All measurements are maximum, and includes wardrobes and window bays where applicable
Prepared by Pixangle ©. Tel 020 8870 2118

This floorplan is for illustration purposes only and is not to scale. The position and size of doors, windows, appliances and other features are approximate.

Tooting | 020 8767 5221 | tooting@winkworth.co.uk
17 Upper Tooting Road, London, SW17 7TS

Winkworth

for every step...

winkworth.co.uk

Winkworth wishes to inform prospective buyers and tenants that these particulars are a guide and act as information only. All our details are given in good faith and believed to be correct at the time of printing but they don't form part of an offer or contract. No Winkworth employee has authority to make or give any representation or warranty in relation to this property. All fixtures and fittings, whether fitted or not are deemed removable by the vendor unless stated otherwise and room sizes are measured between internal wall surfaces, including furnishings.