



HATTON WALL, LONDON, EC1N
£1,900,000 LEASEHOLD

THIS FABULOUS THREE BEDROOM PROPERTY HAS BEEN FINISHED TO AN EXTREMELY HIGH SPEC AND OFFERS A SUPERB PRIVATE ROOF TERRACE.

Clerkenwell | 020 7405 1288 | clerkenwell@winkworth.co.uk

Winkworth

for every step...

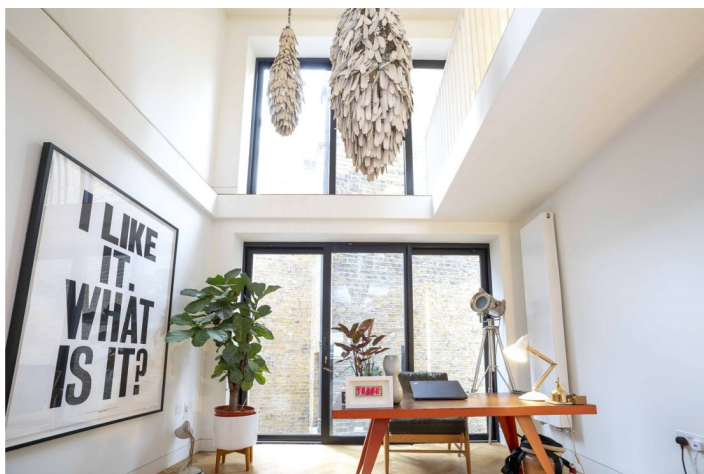
winkworth.co.uk



DESCRIPTION:

The apartment is designed by Emulsion Achitect and Design studio based in London.

Hatton Wall links Leather Lane to Hatton Garden and so ideally located for the renowned Leather Lane street-food market. Farringdon Station, Chancery Lane, Kings Cross and Angel are all close by. Equally it is within easy walking distance of both the City and The West End.



Winkworth

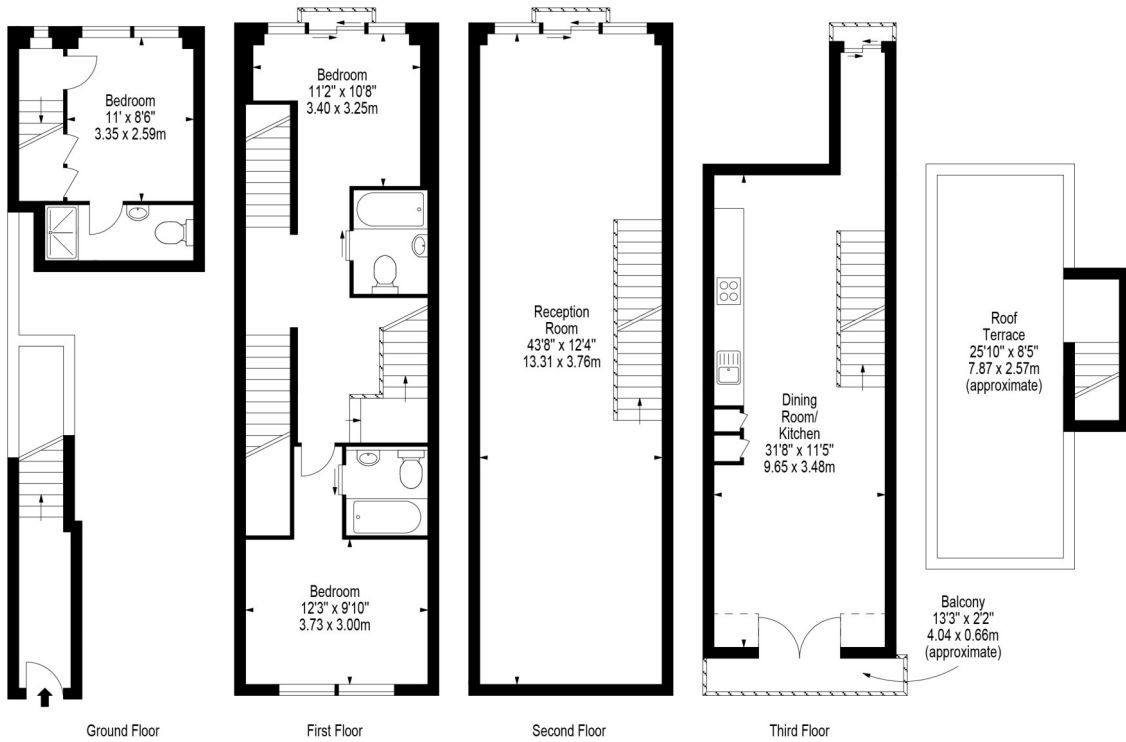
for every step...



Winkworth
for every step...

winkworth.co.uk

Hatton Wall,
London, EC1N



Approx Gross Internal Area **1672 Sq Ft - 155.33 Sq M**
(Including Restricted Height Area)
(Excluding Roof Terrace)

Floor Plan Supplied For Identification Purposes Only And May Not Be Accurate
Floor Plan by www.elegantmediasolution.com

This floorplan is for illustration purposes only and is not to scale. The position and size of doors, windows, appliances and other features are approximate.

Clerkenwell | 020 7405 1288 | clerkenwell@winkworth.co.uk

Winkworth

for every step...

winkworth.co.uk

Winkworth wishes to inform prospective buyers and tenants that these particulars are a guide and act as information only. All our details are given in good faith and believed to be correct at the time of printing but they don't form part of an offer or contract. No Winkworth employee has authority to make or give any representation or warranty in relation to this property. All fixtures and fittings, whether fitted or not are deemed removable by the vendor unless stated otherwise and room sizes are measured between internal wall surfaces, including furnishings.