

LANDSEER ROAD N19 OFFERS IN EXCESS OF £850,000 FREEHOLD

Offering for sale a delightful two bedroom two storey chain-free period house, set in a road in the N19 area.





Landseer Road is located between Sussex Way and Cornwallis Road, nearest tube station being Archway (Northern line) and close to Upper Holloway overground station, good local bus services, shops & Whittington Park. Islington Upper Street & Highbury Corner in one direction and Highgate Village in the other are served by bus services from Holloway Road.

This charming property which requires updating, is arranged over two floors and comprises a reception room to the front with a bay with stripped shutters, which inter-connects through to a rear reception room, and a kitchen/breakfast room all on the ground floor. Stairs then go up to a half-landing where there is a windowed bathroom and separate w.c. Stairs then continue up to the first floor where there are two bedrooms. The house also has a garden to its rear.

| | |
|-------------------------------------|--|
| Parking: | We have been advised by the family – unallocated public street |
| Utilities: | The property is serviced by mains water, electricity, gas and sewage |
| Broadband and Data Coverage; | Ultrafast Broadband services are available via Openreach, Hyperoptic, Virgin Media, Community Fibre. |
| Construction Type: | We have been advised by the family - brick with tiled roof/timber framed windows |
| Heating: | Gas central heating |

Council Tax: London Borough of Islington - Council Tax Band: E (£2,458.89 for 2025/26)













Whilst every attempt has been made in good faith to ensure the accuracy of these details, all data shown including the floorplan, are an interpretation for illustrative purposes only and should be used as a general outline for guidance only and is/are not to scale. Any areas, measurements or distances quoted are approximate and should not be relied upon to value a property or be the basis of any sale or let. Any intending purchaser should satisfy themselves by inspection, searches, enquires and full survey as to the correctness of each statement contained within these particulars and are not to be relied upon as a statement or representation of fact. No responsibility is taken for any error, omission, mis-statement or use of data shown. Please note the floor plan has been carried out by an independent company.

The agent has not tested any apparatus, equipment, fixtures & fittings or services and so cannot verify that they are in working order or fit for the purpose. A buyer is advised to obtain verification from their solicitor or surveyor. These details may depict items that are not for sale or included in the sale of the property. Please note that we have not checked the situation with regards to planning consents, building regulation consents and any other relevant consent relating to this property, therefore any interested applicant should carry out their own enquiries with the appropriate parties and/or authorities. These particulars do not form part of any contract and all properties are offered subject to contract.

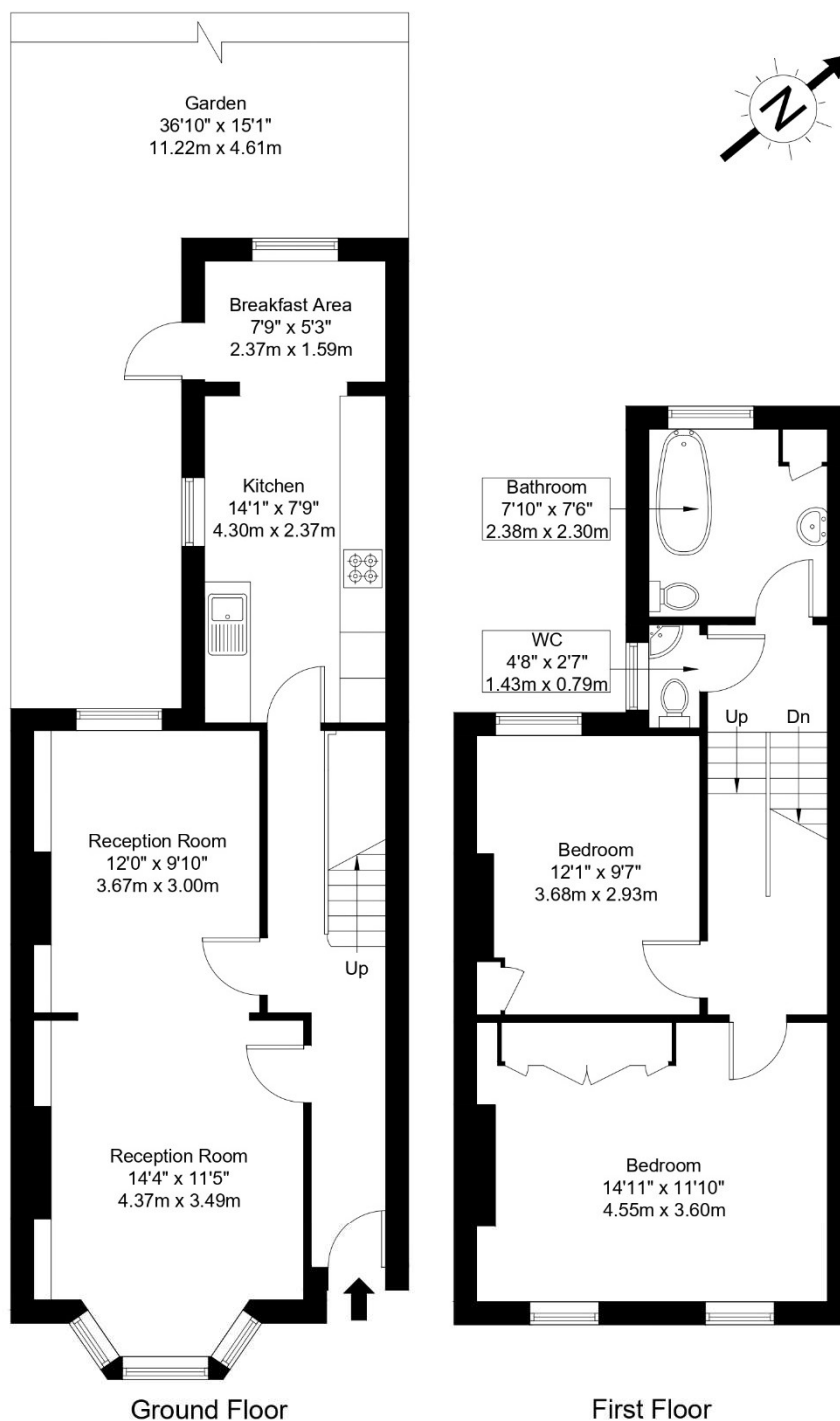
| Score | Energy rating | Current | Potential |
|-------|---------------|---------|-----------|
| 92+ | A | | |
| 81-91 | B | | |
| 69-80 | C | | 74 C |
| 55-68 | D | | |
| 39-54 | E | 50 E | |
| 21-38 | F | | |
| 1-20 | G | | |

Landseer Road, N19 4JR

Approx Gross Internal Area = 93.20 sq m / 1003 sq ft

Garden = 40.13 sq m / 432 sq ft

Total = 133.33 sq m / 1435 sq ft



Ref :

Copyright **BLEU PLAN**

The Floor plan is not to scale and measurements and areas shown are approximate and therefore should be used for illustrative purposes only. The plan has been prepared in accordance with the RICS code of Measuring Practice and whilst we have confidence in the information produced it must not be relied on. Maximum lengths and widths are represented on the floor plan. If there is any aspect of particular importance, you should carry out or commission your own inspection of the property.

Copyright @ BleuPlan