



RODWELL ROAD, EAST DULWICH, LONDON, SE22
£1,350,000 FREEHOLD

A WONDERFUL, ARCHITECTURALLY
DESIGNED, END OF TERRACE HOME,
SITUATED IN A FANTASTIC LOCATION IN

Dulwich | 020 8299 2722 | dulwich@winkworth.co.uk

Tenure Freehold | Council Tax Band E – London Borough of Southwark |

Winkworth

winkworth.co.uk

See things differently



DESCRIPTION:

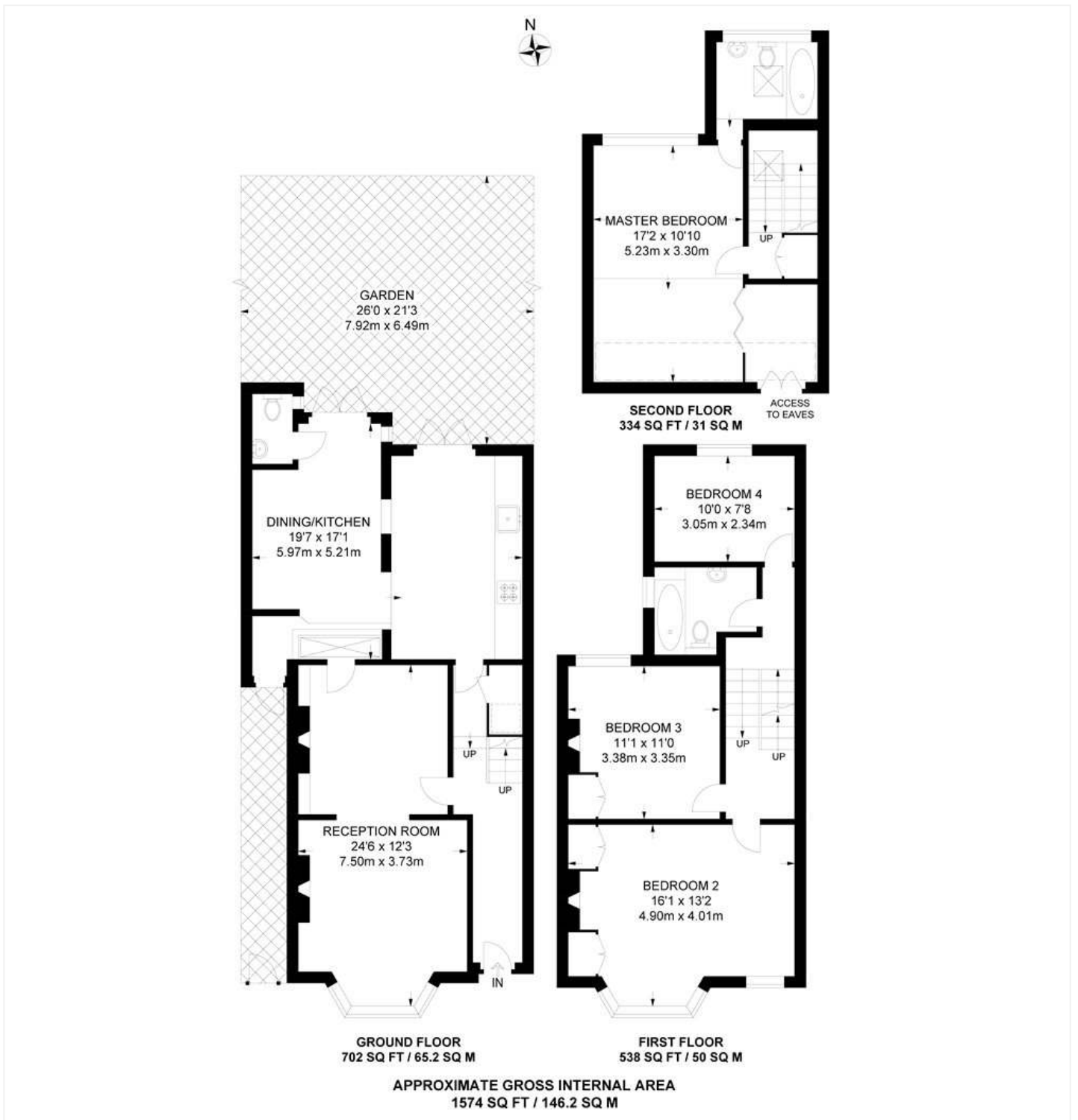
A wonderful, architecturally designed, End of Terrace home, situated in a fantastic location in SE22. This much-loved fantastic home is offered to the market in great condition. Comprising on the ground floor a spacious double reception complete with high ceilings, original fireplace with surround and built in shelving. Stepping down into an architecturally designed, wider than average kitchen diner, complete with new bespoke kitchen with built in appliances, downstairs cloak room and doors leading out to a mature garden to rear. The ground floor further comprises side access via a secure, shared entrance, ideal for storing bikes or coming home from muddy walks. The first floor comprises two spacious double bedrooms, a spacious family bathroom and large single bedroom to rear. The main double to front boasts sound proofed, wooden sash windows and built in wardrobes. The loft has been converted to provide a fantastic ensuite double bedroom, boasting skyline views of London and a clever hidden door that allows access to the ensuite. The property is situated within very close proximity to Lordship Lane with all its independent shops, bars and amenities. There a plenty of school catchments to choose from, with Harris and Heber primaries on your doorstep and Charter East within a short walk for secondary. This is a fantastic family home in a very sought-after location and early viewings are highly advised.

AT A GLANCE

- Four Double Bedrooms
- Two Reception Rooms
- Two Modern Bathrooms
- Downstairs Cloakroom/WC
- Wooden Sash Windows
- Skyline Views
- Mature Rear Garden
- Fantastic Family Home
- Great Location







This floorplan is for illustration purposes only and is not to scale. The position and size of doors, windows, appliances and other features are approximate.

Dulwich | 020 8299 2722 | dulwich@winkworth.co.uk



winkworth.co.uk

See things differently

Winkworth wishes to inform prospective buyers and tenants that these particulars are a guide and act as information only. All our details are given in good faith and believed to be correct at the time of printing but they don't form part of an offer or contract. No Winkworth employee has authority to make or give any representation or warranty in relation to this property. All fixtures and fittings, whether fitted or not are deemed removable by the vendor unless stated otherwise and room sizes are measured between internal wall surfaces, including furnishings.