



11 TARVES WAY, GREENWICH, LONDON, SE10
GUIDE PRICE £400,000-£425,000 LEASEHOLD

A SUPERB AND BRIGHT TWO BEDROOM APARTMENT THAT IS PRESENTED IN LOVELY CONDITION THROUGHOUT, THAT MEASURES 739 SQ FT AND FEATURES SECURE OFF STREET PARKING! PERFECTLY LOCATED IN WEST GREENWICH AND ADJACENT TO MAINLINE RAIL AND DLR!

Greenwich, 02030533033, greenwich@winkworth.co.uk

Winkworth

for every step...

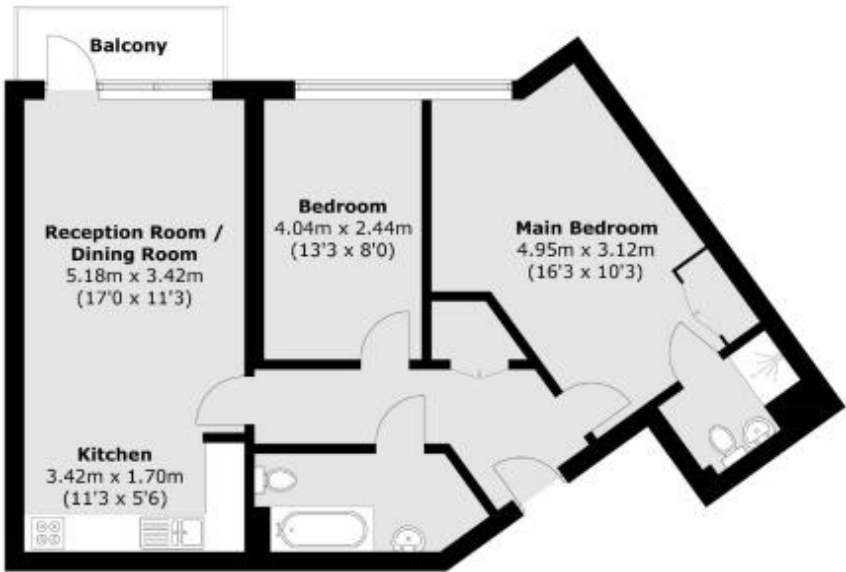
winkworth.co.uk

DESCRIPTION:

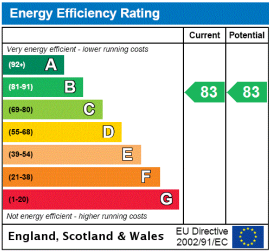
Guide Price £400,000-£425,000. A superb and bright two bedroom apartment that is presented in lovely condition throughout, that measures 739 sq ft and features secure off street parking! Perfectly located in West Greenwich and adjacent to mainline rail and DLR!

Found on the 3rd floor of this modern block, the accommodation comprises a beautiful 17ft reception room that leads has a well fitted open plan kitchen and access onto a balcony (rear facing over the communal grounds). There are two good sized double bedrooms, a family bathroom and an ensuite off the master bedrooms. Benefits include ample storage and secure underground parking!

Tarves Way is a supremely popular modern development that lies next to West Greenwich mainline rail and DLR, and is just moments away from the town centre, which offers a fantastic array of shops and restaurants, along with the marketplace, riverboat service and The Royal Park. The property is also offered chain free! Your earliest viewing is highly recommended.



This floorplan is for illustration purposes only and is not to scale. The position and size of doors, windows, appliances and other features are approximate.



Tenure: Leasehold
Term: 108 year and 7 months
Service Charge: £4150 per annum
Ground Rent: £ 250 Annually (subject to increase)
Council Tax Band: C
Where no figures are shown, we have been unable to ascertain the information. All figures that are shown were correct at the time of printing.

Greenwich | 02030533033 | greenwich@winkworth.co.uk



winkworth.co.uk

Winkworth wishes to inform prospective buyers and tenants that these particulars are a guide and act as information only. All our details are given in good faith and believed to be correct at the time of printing but they don't form part of an offer or contract. No Winkworth employee has authority to make or give any representation or warranty in relation to this property. All fixtures and fittings, whether fitted or not are deemed removable by the vendor unless stated otherwise and room sizes are measured between internal wall surfaces, including furnishings.