



## Alderney Street, SW1V

£2,500 PER MONTH

FURNISHED

### AT A GLANCE

- Two double bedrooms
- Modern bathroom
- Open plan reception and kitchen
- 2nd floor
- Period conversion

**Winkworth**

for every step...



Score	Energy rating	Current	Potential
92+	A		
81-91	B		
69-80	C	75 C	80 C
55-68	D		
39-54	E		
21-38	F		
1-20	G		

## ALDERNEY STREET, SW1V

£2,500 PER MONTH

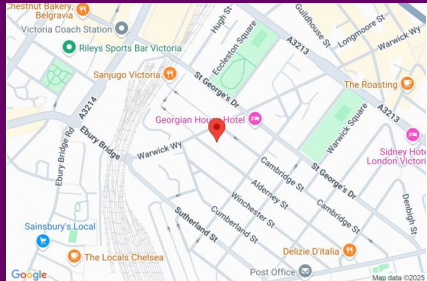
FURNISHED

A well located, two bedroom flat in the sought after Pimlico Grid.

The second floor period apartment, comprises of two double bedrooms both with ample inbuilt storage, a modern bathroom with rain fall shower over bath, and an open plan living room and kitchen.

The flat is offered on a furnished basis.

Alderney Street, is located approximately 0.4 miles from Victoria Station with great links in and out of the City.

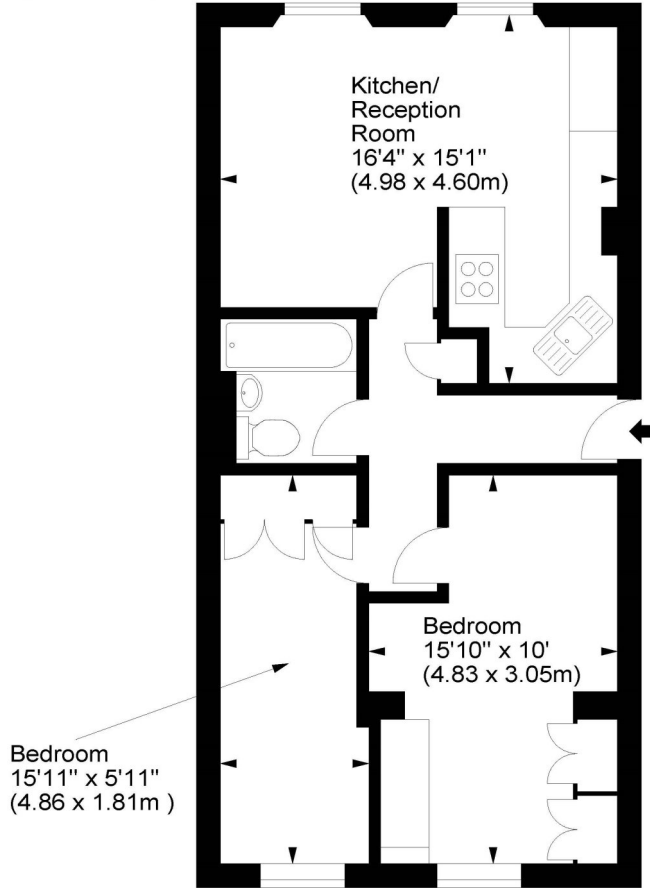


winkworth wishes to inform prospective buyers and tenants that these particulars are a guide and act as information only. All our details are given in good faith and believed to be correct at the time of printing but they don't form part of an offer or contract. No winkworth employee has authority to make or give any representation or warranty in relation to this property. All fixtures and fittings, whether fitted or not are deemed removable by the vendor unless stated otherwise and room sizes are measured between internal wall surfaces, including fireplaces.

### Alderney Street, SW1



Approx. Gross Internal Area  
561 Sq Ft - 52.12 Sq M



Second Floor

For illustration purposes only. Not to scale.  
All measurements are taken and shown at floor level.  
www.r3photography.co.uk © Photography / Floor Plans / Lease Plans / EPCs



Pimlico & Westminster | 020 7828 1786 |

pimlico@winkworth.co.uk

winkworth.co.uk/pimlico

**Winkworth**

for every step...