



RUGBY AVENUE, HA0
£550,000 FREEHOLD

TWO BEDROOM SEMI DETACHED BUNGALOW IN SUDBURY

Kingsbury | 020 8204 0000 | kingsbury@winkworth.co.uk

Winkworth

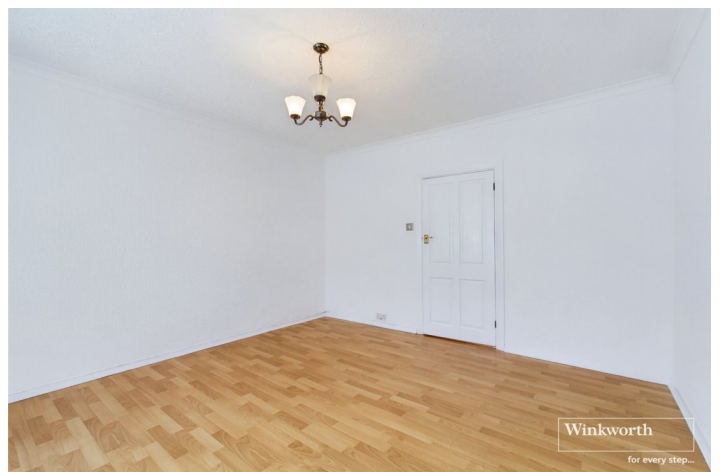
for every step...

winkworth.co.uk



DESCRIPTION:

A lovely blank canvas two-bedroom semi-detached bungalow situated in a peaceful residential road moment from the heart of Sudbury Town. The property accommodates a homely reception room, two double bedrooms, a basic kitchen and a family bathroom whilst hosting a lovingly maintained rear garden surrounded by greenery. With considerable scope to extend (STPP), this home has the potential to become the modern-day growing family's long lasting residence. An internal viewing is advised.

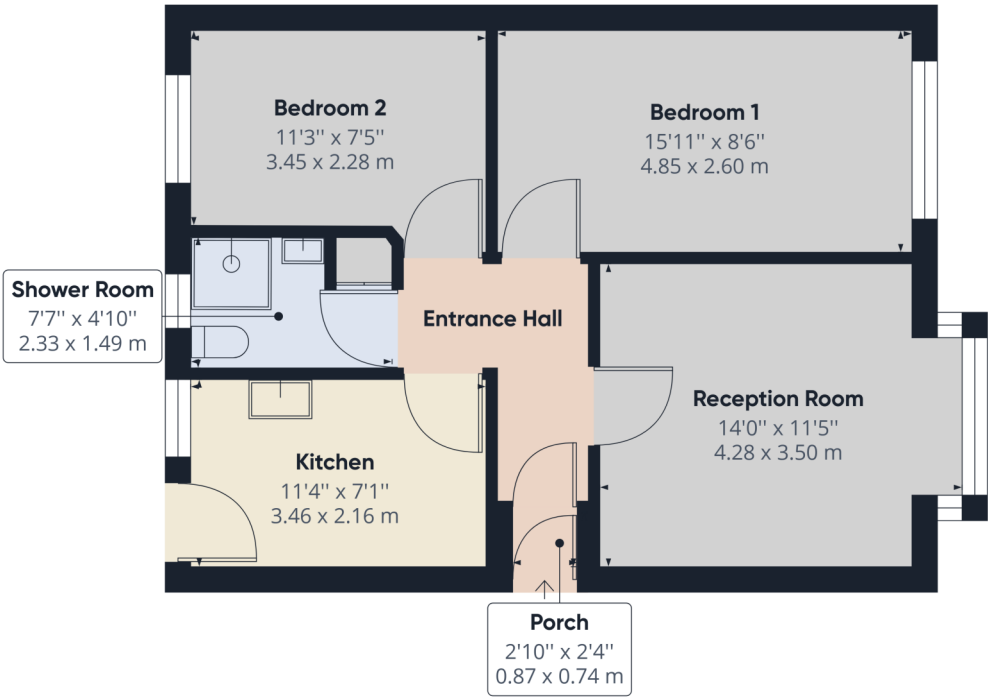


for every step...



Winkworth

for every step...



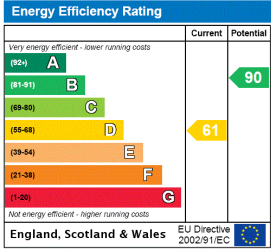
Approximate total area⁽¹⁾
 550.82 ft²
 51.17 m²

(1) Excluding balconies and terraces

While every attempt has been made to ensure accuracy, all measurements are approximate, not to scale. This floor plan is for illustrative purposes only.

GIRAFFE360

This floorplan is for illustration purposes only and is not to scale. The position and size of doors, windows, appliances and other features are approximate.



Kingsbury | 020 8204 0000 | kingsbury@winkworth.co.uk



for every step...

winkworth.co.uk

Winkworth wishes to inform prospective buyers and tenants that these particulars are a guide and act as information only. All our details are given in good faith and believed to be correct at the time of printing but they don't form part of an offer or contract. No Winkworth employee has authority to make or give any representation or warranty in relation to this property. All fixtures and fittings, whether fitted or not are deemed removable by the vendor unless stated otherwise and room sizes are measured between internal wall surfaces, including furnishings.