



Winkworth
for every step...



Winkworth
for every step...



Winkworth
for every step...

BACON LANE, LONDON, NW9
OIEO £550,000

TWO BEDROOM SEMI DETACHED HIDDEN GEM IN ROE GREEN VILLAGE

Kingsbury | 020 8204 0000 | kingsbury@winkworth.co.uk



winkworth.co.uk

See things differently



*****LOCATION LOCATION LOCATION***** A rarely available **TWO-BEDROOM SEMI-DETACHED ICONIC DWELLING** situated **ON A CORNER PLOT** in a hundred-year-old village in **KINGSBURY**. A rich-in-character time capsule taking you back to the 1920s yet sitting between worlds just minutes from the hustle and bustle of modern-day London living. If there is an **NW9** postcode you are looking to acquire, it **MUST BE THIS ONE...!** An abundance of **PEACE** and **PRIVACY** surrounded by enchanting greenery of a wrap-around garden, this hidden gem boasts simplicity and comprises a cosy reception room displaying original features including rustic ceiling beams and a fireplace, a fitted kitchen with a small dining area, two fresh and neutrally decorated double bedrooms, and a stylish bathroom. If you have a passion for gardening or floriculture, then this home will have you in your element with both the front and rear garden hosting an abundance of beautiful foliage. Coming back to the location, numerous highly rated primary and secondary schools are within walking distance, as well as a variety of shops, **ROE GREEN PARK**, and dining facilities available. Also within walking distance are excellent Transport links including Kingsbury Station (Jubilee Line) 0.8 miles, and Colindale Station (Northern Line) 1 mile taking you from suburb to city in under half an hour. An opportunity not to be missed out on. An internal viewing is a must.



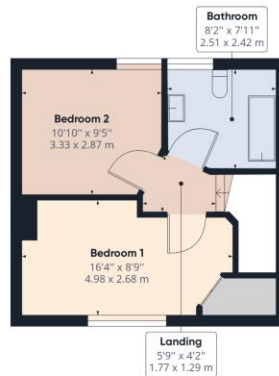


Winkworth

Winkworth



Ground Floor



Floor 1

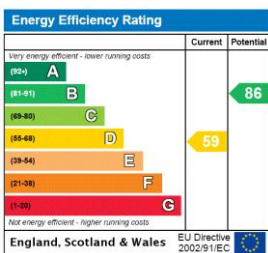
Approximate total area⁽¹⁾
716.91 ft²
66.60 m²

(1) Excluding balconies and terraces

While every attempt has been made to ensure accuracy, all measurements are approximate, not to scale. This floor plan is for illustrative purposes only.

GIRAFFE360

This floorplan is for illustration purposes only and is not to scale. The position and size of doors, windows, appliances and other features are approximate.



Kingsbury | 020 8204 0000 | kingsbury@winkworth.co.uk

Winkworth

winkworth.co.uk

See things differently

Winkworth wishes to inform prospective buyers and tenants that these particulars are a guide and act as information only. All our details are given in good faith and believed to be correct at the time of printing but they don't form part of an offer or contract. No Winkworth employee has authority to make or give any representation or warranty in relation to this property. All fixtures and fittings, whether fitted or not are deemed removable by the vendor unless stated otherwise and room sizes are measured between internal wall surfaces, including furnishings.