

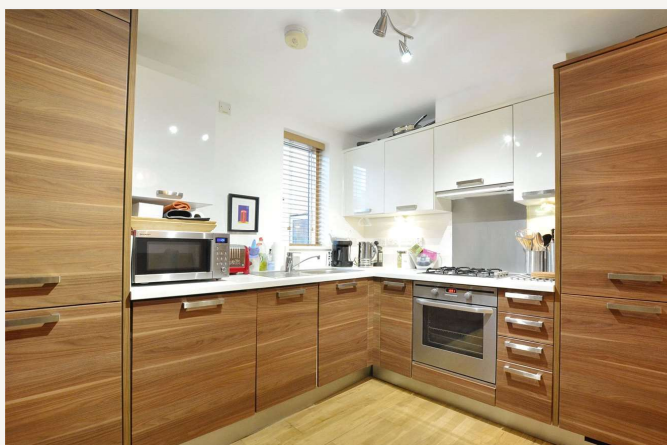


Bardsley Lane, SE10

£2,250 per month *Unfurnished*



A well presented two bedroom, two bathroom flat located in the centre of Greenwich and moments from Cutty Sark DLR. Offered unfurnished and available immediately, your viewing is recommended.



Blackheath

0208 8520999 | blackheath@winkworth.co.uk



MATERIAL INFO

Deposit: £2,596.15
Holding Deposit:
Council Tax Band:
EPC rating: B

For more information, scan the QR code or visit the link below



<https://www.winkworth.co.uk/rent/property/BLA260033>

Where no figures are shown, we have been unable to ascertain the information. All figures that are shown were correct at the time of printing.