



ST JAMES' DRIVE, SW17
£600,000 LEASEHOLD

A SPACIOUS THREE BEDROOM FLAT SITUATED A SHORT WALK FROM TOOTING BEC TUBE STATION

Tooting | 020 8767 5221 | tooting@winkworth.co.uk

Winkworth

for every step...

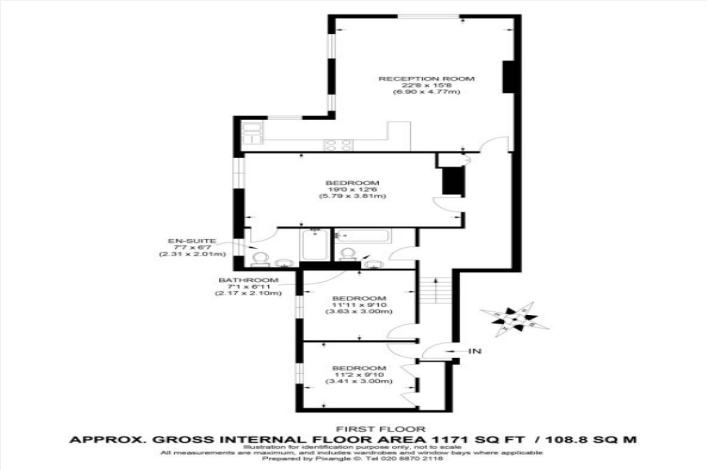
winkworth.co.uk

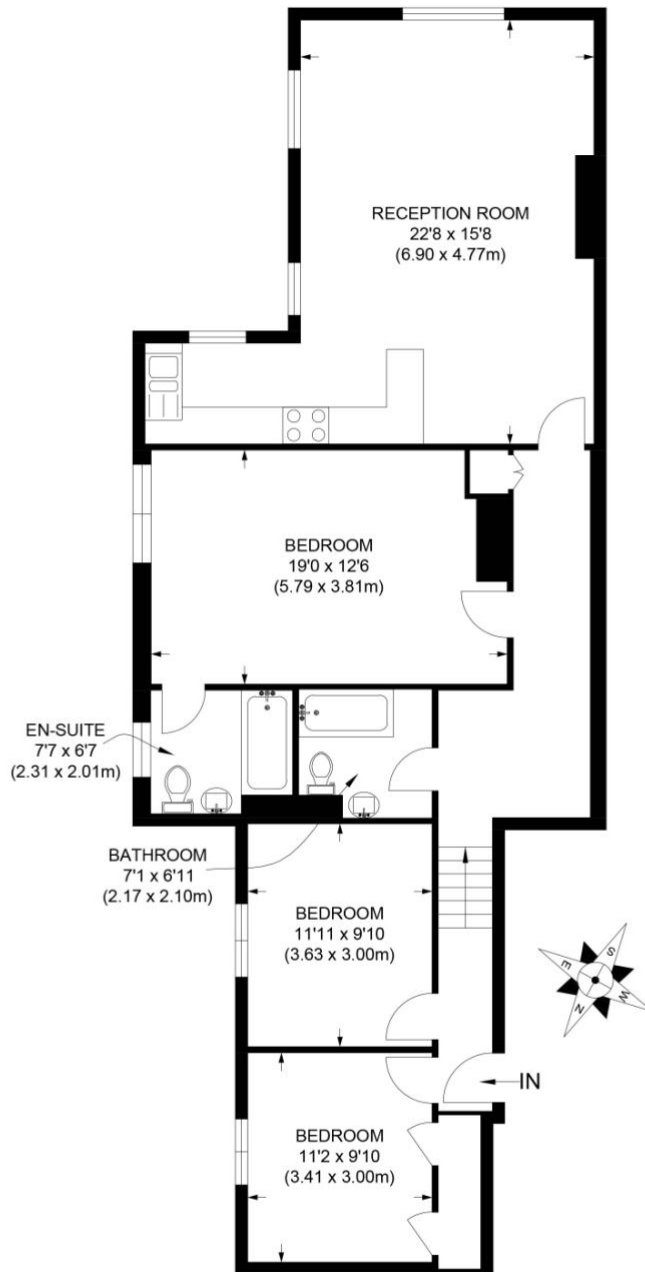


DESCRIPTION:

A spacious three Bedroom apartment situated on the prestigious St James's Drive. This property offers in excess of 1100 sq ft boasting three double bedrooms, two bathrooms and a large open plan living/kitchen area.

St James's Drive is a popular road well situated for access to Wandsworth Common mainline, Balham stations and Tooting Bec underground, offering excellent transport links into the city. The green open spaces of Wandsworth Common are moments away at the end of the road, and the local area offers many shops, bars and restaurants, adding to the location's desirability.



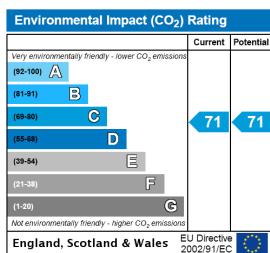
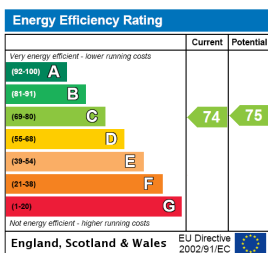


FIRST FLOOR

APPROX. GROSS INTERNAL FLOOR AREA 1171 SQ FT / 108.8 SQ M

Illustration for identification purpose only, not to scale
All measurements are maximum, and includes wardrobes and window bays where applicable
Prepared by Pixangle ©. Tel 020 8870 2118

This floorplan is for illustration purposes only and is not to scale. The position and size of doors, windows, appliances and other features are approximate.



Winkworth

Tooting | 020 8767 5221 | tooting@winkworth.co.uk

for every step...

winkworth.co.uk

Winkworth wishes to inform prospective buyers and tenants that these particulars are a guide and act as information only. All our details are given in good faith and believed to be correct at the time of printing but they don't form part of an offer or contract. No Winkworth employee has authority to make or give any representation or warranty in relation to this property. All fixtures and fittings, whether fitted or not are deemed removable by the vendor unless stated otherwise and room sizes are measured between internal wall surfaces, including furnishings.