



MERIDIAN HOUSE, GREENWICH, LONDON, SE10
£385,000 LEASEHOLD

WE ARE PLEASED TO OFFER THIS WELL PRESENTED THREE BEDROOM GROUND FLOOR MAISONNETTE, THAT MEASURES CIRCA 677 SQ FT AND IS OFFERED CHAIN FREE. LOCATED CLOSE TO THE RIVER WALK IN EAST GREENWICH.

Greenwich | 02030533033 | greenwich@winkworth.co.uk

Winkworth

for every step...

winkworth.co.uk



DESCRIPTION:

We are pleased to offer this well presented three bedroom ground floor maisonette, that measures circa 677 sq ft and is offered chain free. Located close to the river walk in East Greenwich.

The property has just gone through a partial refurbishment, with a brand new fitted bathroom and fully redecorated. In good condition the property features, along with the bathroom, a modern kitchen, reception room and three good sized bedrooms. Added benefits include gas central heating and double glazing. To the front are communal grounds and its worth mentioning the grounds and block are accessed via security gates giving an extra sense of security.

Located in East Greenwich, at the foot of the Peninsula and on the corner of Azof Street and Blackwall Lane, the property is particularly well located for quick access to local shops on Trafalgar Road. The O2 arena is also close by, including mainline rail, riverboat service and DLR. Greenwich Park is within a 10 minute walk with the town centre being just a little further.

AT A GLANCE

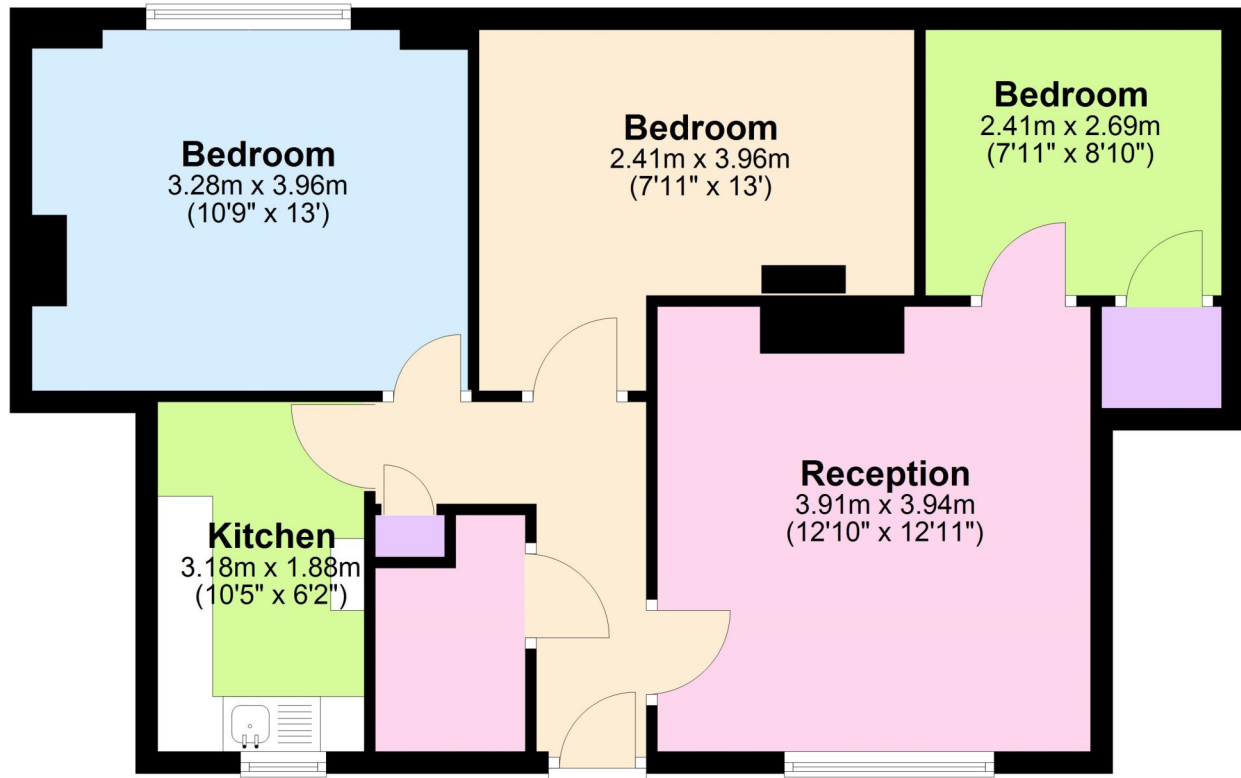
- ground floor maisonette
- three bedrooms
- just redecorated
- new bathroom
- circa 677 sq ft
- no chain
- communal grounds
- East Greenwich location
- close to river walk
- short walk to shops and rail





Ground Floor

Approx. 62.9 sq. metres (677.4 sq. feet)



Total area: approx. 62.9 sq. metres (677.4 sq. feet)

This floorplan is for illustration purposes only and is not to scale. The position and size of doors, windows, appliances and other features are approximate.

Score	Energy rating	Current	Potential
92+	A		
81-91	B		
69-80	C		
55-68	D		
39-54	E		
21-38	F		
1-20	G		

Tenure: Leasehold

Term: 100 year

Service Charge: £1200 per annum

Ground Rent: peppercorn

Council Tax Band: A

Where no figures are shown, we have been unable to ascertain the information. All figures that are shown were correct at the time of printing.

Greenwich | 02030533033 | greenwich@winkworth.co.uk

Winkworth

for every step...

winkworth.co.uk

Winkworth wishes to inform prospective buyers and tenants that these particulars are a guide and act as information only. All our details are given in good faith and believed to be correct at the time of printing but they don't form part of an offer or contract. No Winkworth employee has authority to make or give any representation or warranty in relation to this property. All fixtures and fittings, whether fitted or not are deemed removable by the vendor unless stated otherwise and room sizes are measured between internal wall surfaces, including furnishings.