



CROWN ROAD, HERTFORDSHIRE, WD6

**£350,000 LEASEHOLD**

## TWO DOUBLE BEDROOM GROUND FLOOR GARDEN MAISONETTE

Borehamwood | 020 8953 8899 | [borehamwood@winkworth.co.uk](mailto:borehamwood@winkworth.co.uk)





## DESCRIPTION:

Offered for sale "Chain Free" and with the benefit of both generous front and rear gardens is this two double bedroom purpose built garden maisonette.

Ideally located for Woodlands and Cowley Hill Primary Schools, Aberford Park, local shops and the 306 Bus Route with its service to Borehamwood High Street and Thameslink train station. the property would be ideal for a first time buyer, young family or downsizer.

Council tax band C

## AT A GLANCE

- 2 Bedrooms
- 93 Year Lease
- Own Front and Rear Gardens
- Chain Free
- Gas Central Heating
- 711 Square Feet









Approximate Gross Internal Area = 66.1 sq m / 711 sq ft

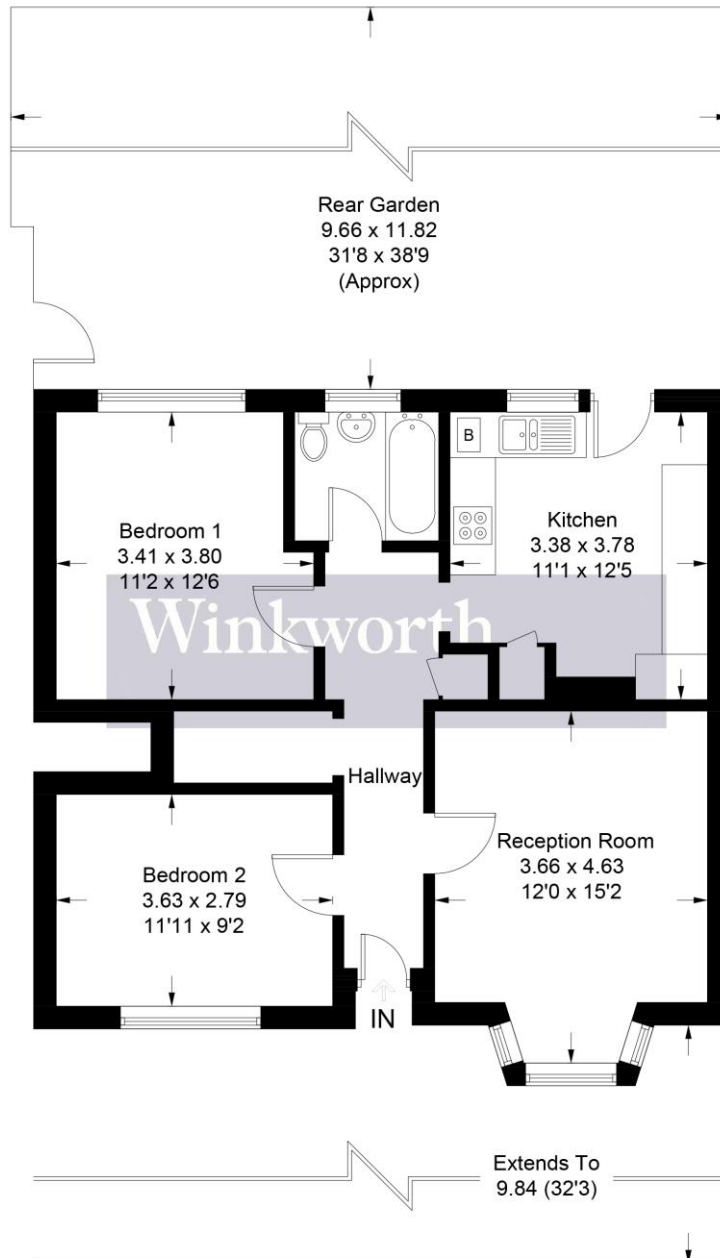
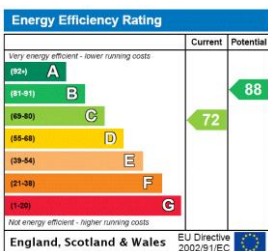


Illustration for identification purposes only, measurements are approximate, not to scale. Winkworth © 2022 (ID914697)

This floorplan is for illustration purposes only and is not to scale. The position and size of doors, windows, appliances and other features are approximate.



Borehamwood | 020 8953 8899 | borehamwood@winkworth.co.uk