



RIFFEL ROAD, NW2

£2,150 PER MONTH UNFURNISHED

**RECENTLY RENOVATED FIRST FLOOR APARTMENT
LOCATED IN THE HEART OF WILLESDEN GREEN.**

Kensal Rise & Queens Park | 0208 960 4947 | kensalrise@winkworth.co.uk

Winkworth

for every step...

winkworth.co.uk



DESCRIPTION:

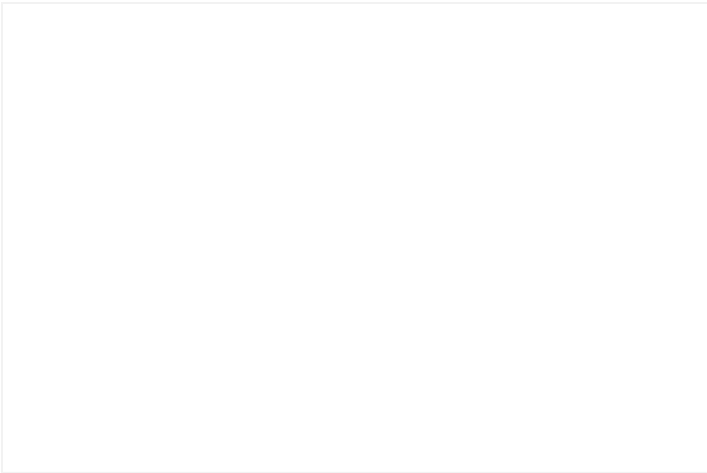
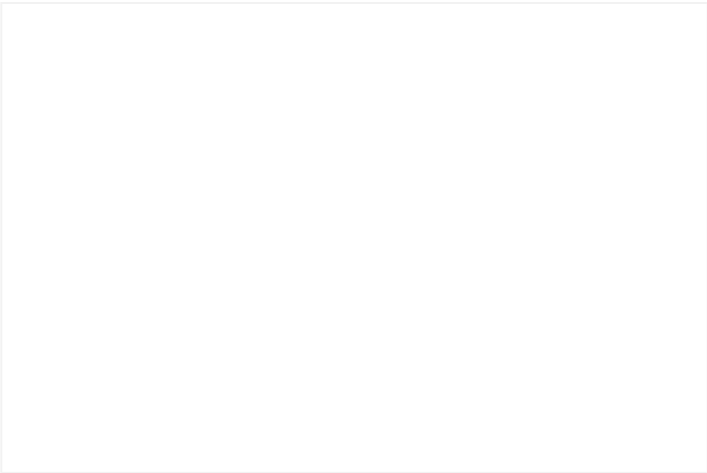
Modern apartment located in the heart of Willesden Green,

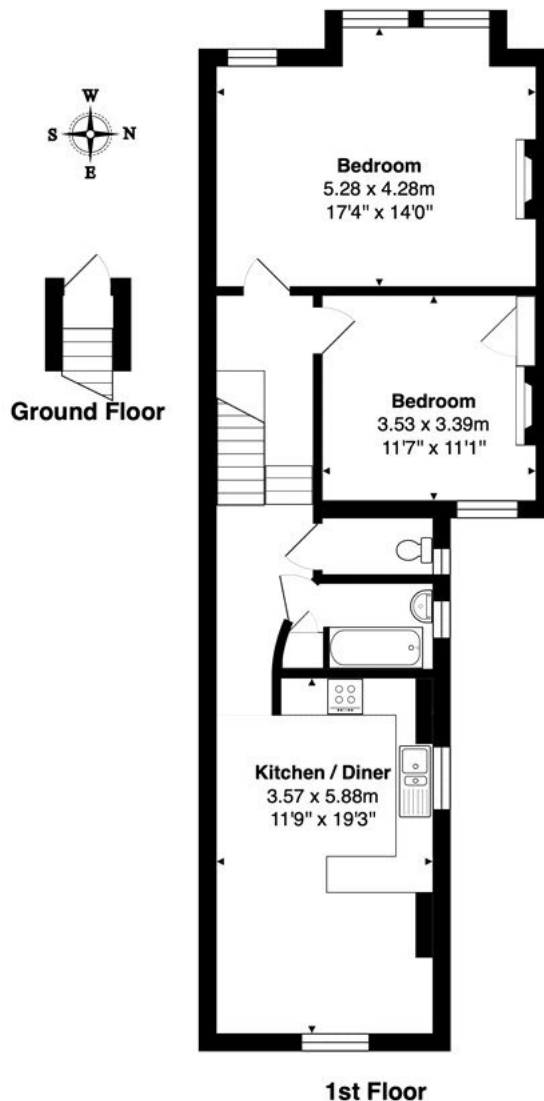
This versatile apartment can either be used as a large one bedroom apartment with eat-in kitchen, large reception room and spacious bedroom, Alternatively as a two double bedroom apartment with a rear kitchen reception room.

With modern appliances, ample storage, high level finish, this first floor apartment is offered unfurnished (with double wardrobe in middle bedroom).

photos from previous tenancy

Please note all windows have been upgraded in June 2025 to double glazing.

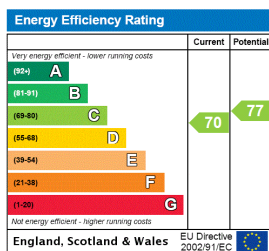




Total Area: 72.0 m² ... 775 ft²

All measurements are approximate and for display purposes only

This floorplan is for illustration purposes only and is not to scale. The position and size of doors, windows, appliances and other features are approximate.



Deposit: 5 weeks rent

Holding Deposit: 1 weeks rent

Council Tax Band: D

Where no figures are shown, we have been unable to ascertain the information. All figures that are shown were correct at the time of printing.

Winkworth

Kensal Rise & Queens Park | 0208 960 4947 | kensalrise@winkworth.co.uk

for every step...

winkworth.co.uk

Winkworth wishes to inform prospective buyers and tenants that these particulars are a guide and act as information only. All our details are given in good faith and believed to be correct at the time of printing but they don't form part of an offer or contract. No Winkworth employee has authority to make or give any representation or warranty in relation to this property. All fixtures and fittings, whether fitted or not are deemed removable by the vendor unless stated otherwise and room sizes are measured between internal wall surfaces, including furnishings.