



- OUT BUILDING
- CONSERVATORY
- HIGH CEILINGS
- BRIGHT & AIRY
- LANDSCAPED GARDEN

EGERTON GARDENS, HENDON, LONDON, NW4

OIEO £1,200,000 FREEHOLD

## RARE FOUR BEDROOM DETACHED FAMILY HOME

**Tenure:** Freehold

**Council Tax Band:** F

**Local Authority:** Barnet

Hendon | 020 8202 1031 | [hendon@winkworth.co.uk](mailto:hendon@winkworth.co.uk)

**Winkworth**

for every step...

[winkworth.co.uk](http://winkworth.co.uk)





## DESCRIPTION:

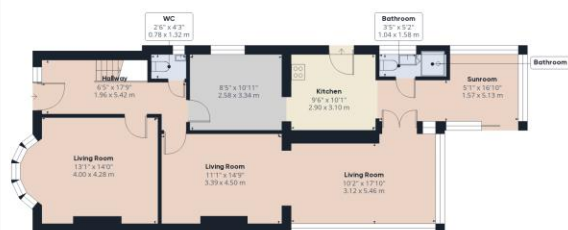
Nestled on the prestigious, tree-lined Egerton Gardens in NW4, this elegant four-bedroom detached residence offers a rare opportunity to acquire a substantial family home in one of Hendon's most sought-after addresses. Immaculately maintained and thoughtfully extended to the rear, the property seamlessly blends timeless character with contemporary living — with further scope to develop the loft space (STPP). Behind its handsome façade, the home opens into beautifully proportioned interiors that balance warmth, space, and sophistication. A formal reception room provides a refined setting for relaxation or entertaining, while a spacious through lounge offers versatile living and dining zones tailored for family life. To the rear, a bright conservatory connects effortlessly to the garden, creating an inviting backdrop for casual gatherings or year-round outdoor enjoyment.







**Winkworth**  
for every step...



Ground Floor Building 1



Floor 1 Building 1



Ground Floor Building 2

Approximate total area<sup>(1)</sup>1996.08 ft<sup>2</sup>185.44 m<sup>2</sup>

(1) Excluding balconies and terraces

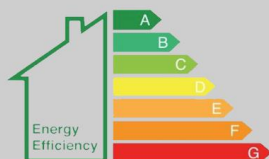
While every attempt has been made to ensure accuracy, all measurements are approximate, not to scale. This floor plan is for illustrative purposes only.

Calculations are based on RICS IPMS 3C standard.

GIRAFFE 360

This floorplan is for illustration purposes only and is not to scale. The position and size of doors, windows, appliances and other features are approximate.

EPC rating coming soon



Hendon | 020 8202 1031 | hendon@winkworth.co.uk

Winkworth

for every step...

winkworth.co.uk

Winkworth wishes to inform prospective buyers and tenants that these particulars are a guide and act as information only. All our details are given in good faith and believed to be correct at the time of printing but they don't form part of an offer or contract. No Winkworth employee has authority to make or give any representation or warranty in relation to this property. All fixtures and fittings, whether fitted or not are deemed removable by the vendor unless stated otherwise and room sizes are measured between internal wall surfaces, including furnishings.