



CANONBURY STREET, LONDON, N1
£480 PER WEEK FURNISHED

A LIGHT AND BRIGHT TWO BEDROOM APARTMENT SET ON THE TOP FLOOR CLOSE TO ESSEX ROAD

Islington | 0207 354 2480 | islington@winkworth.co.uk

Tenant Fees Apply: Details of fees for tenant referencing, tenancy agreement admin fees and renewal fees are available on the Winkworth website and the link can be found with the displayed rent for the property. Tenants should ensure they are fully conversant with these upfront fees and other costs that are involved at the outset of the tenancy before making an offer to rent and your local Winkworth office will provide written details upon request.

winkworth.co.uk

Winkworth

See things differently



DESCRIPTION:

A well proportioned two bedroom flat in the heart of Islington set just off the Essex Road. This light and bright top floor flat boasts even sized bedrooms and a modern bathroom. Canonbury Street is located just off the Essex Road. The plethora of bars, restaurants and boutiques of Upper Street are close by offering a variety of independent and commercial retailers. Essex Road over ground station is seconds away offering a quick and easy route in to Moorgate and the city. Angel underground station and Highbury and Islington station are also both about a ten minutes walk. Furnished.

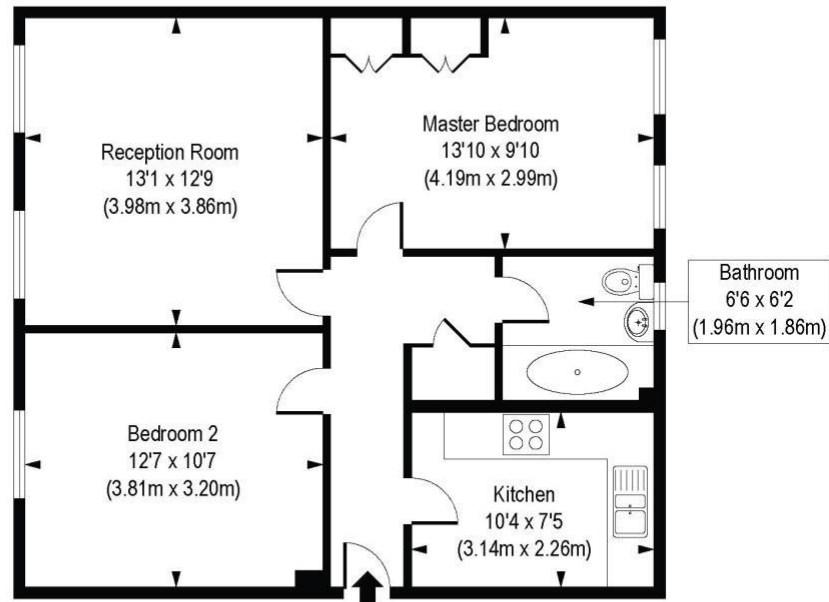
Winkworth



Winkworth

Canonbury Street, N1

Approx. Gross Internal Floor Area 647 sq. ft / 60.08 sq. m



Second Floor

COMPLIANT WITH RICS CODE OF MEASURING PRACTICE Floorplan is for illustrative purposes only and is not to scale. Every attempt has been made to ensure the accuracy of the floorplan shown, however all measurements, fixtures, fittings and data shown are an approximate interpretation for illustrative purposes only. Liability for errors, omissions or mis-statement through negligence or otherwise is hereby excluded.

This floorplan is for illustration purposes only and is not to scale. The position and size of doors, windows, appliances and other features are approximate.

Islington | 0207 354 2480 | islington@winkworth.co.uk

Winkworth

winkworth.co.uk

See things differently

Winkworth wishes to inform prospective buyers and tenants that these particulars are a guide and act as information only. All our details are given in good faith and believed to be correct at the time of printing but they don't form part of an offer or contract. No Winkworth employee has authority to make or give any representation or warranty in relation to this property. All fixtures and fittings, whether fitted or not are deemed removable by the vendor unless stated otherwise and room sizes are measured between internal wall surfaces, including furnishings.