



THOMAS COURT, BRISTOL, AVON, BS1
£230,000 LEASEHOLD

Winkworth



THOMAS COURT, BRISTOL, AVON, BS1

Walk out balcony | 1 bedroom | prime location | first floor |

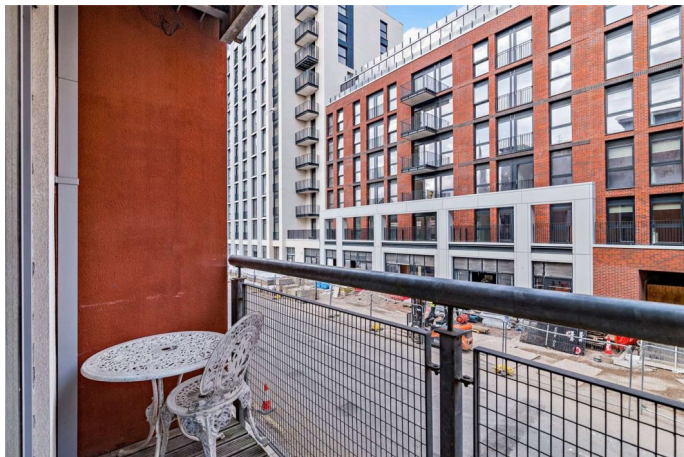
parking | 553sqft | council tax B | EWS1 approved | service charge £106 pcm.

A modern and stylish first-floor apartment located in the heart of the city. This well-presented property offers a comfortable and convenient living.

Upon entering the apartment, you will be greeted by an openplan lounge/ kitchen area and walk out balcony, perfect for entertaining guests. The open-plan kitchen is fully equipped with modern appliances and offers ample storage space.

There is a good-sized double bedroom with fitted wardrobes and modern bathroom.

Situated in a sought-after location, this apartment is just a stone's throw away from the Bristol Bridge allowing easy access to Baldwin Street, Castle Park, Broadmead, St Nicholas market and Cabot Circus. You are surrounded by a multitude of café's, bars and restaurants all within the immediate vicinity.



Tenure: Leasehold

Lease length: Remainder of 998 years

Bristol Council: Tax band B

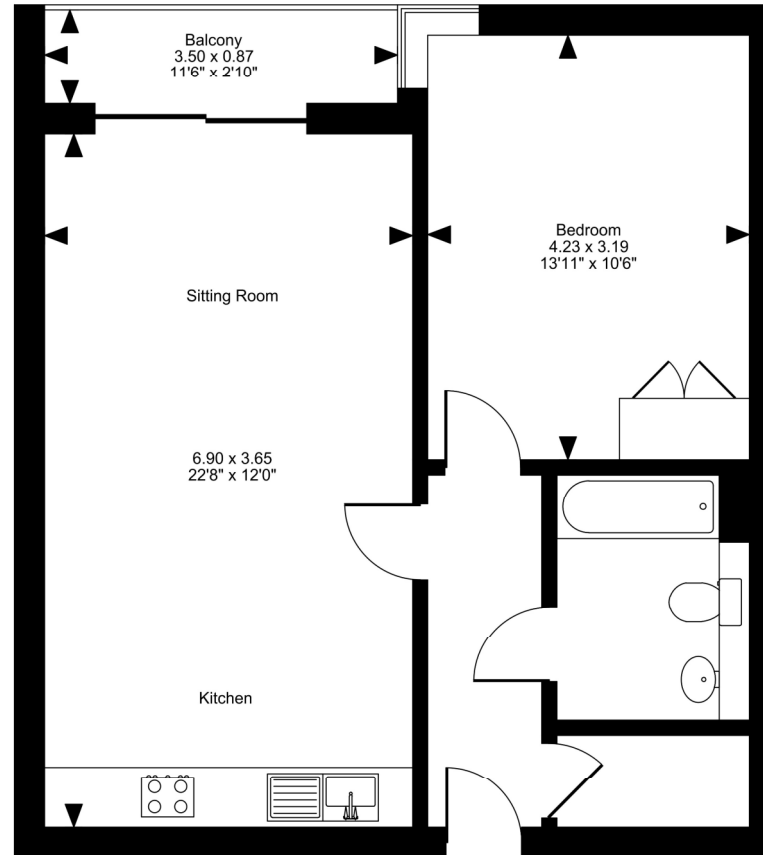
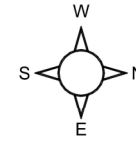
Broadband: Superfast

Postcode: BS1 6LE

LOCATION



Thomas Court, Three Queens Lane, Bristol
 Approximate Gross Internal Area
 553 Sq Ft/51 Sq M
 Balcony external area = 33 Sq Ft/3 Sq M



First Floor

FOR ILLUSTRATIVE PURPOSES ONLY - NOT TO SCALE

The position & size of doors, windows, appliances and other features are approximate only.
 © ehouse. Unauthorised reproduction prohibited. Drawing ref. dig/8656586/OHL

Energy Efficiency Rating		
	Current	Potential
Very energy efficient - lower running costs		
(92-100) A		
(81-91) B		
(69-80) C	83	87
(55-68) D		
(39-54) E		
(21-38) F		
(1-20) G		
Not energy efficient - higher running costs		
England, Scotland & Wales		EU Directive 2002/91/EC

Bishopston | 01179 838383 | bishopston@winkworth.co.uk

winkworth.co.uk

Winkworth wishes to inform prospective buyers and tenants that these particulars are a guide and act as information only. All our details are given in good faith and believed to be correct at the time of printing but they don't form part of an offer or contract. No Winkworth employee has authority to make or give any representation or warranty in relation to this property. All fixtures and fittings, whether fitted or not are deemed removable by the vendor unless stated otherwise and room sizes are measured between internal wall surfaces, including furnishings.

Winkworth