

Winkworth

Longfield Street, Southfields, SW18 5RD







A large three bedroom period maisonette offering spacious accommodation arranged over two floors. The property is located on a popular residential road and benefits from a private garden and no onward chain. This split-level maisonette comprises approximately 1,083 sq. ft. which includes a full width front reception room and separate kitchen/dining room with stairs down onto the private rear garden. The three bedrooms are serviced by two bathrooms (one en-suite). Sold with no onward chain and a long lease.

Longfield Street is a quiet residential street well located for access to the amenities of Southfields Village including Southfields Underground Station (District Line). Sheringdale Primary School is also nearby which boasts an Outstanding Ofsted rating.

- Period Maisonette
- Three Bedrooms
- Two Bathrooms
- Private Garden
- Full-Width Living Room
- Kitchen/Dining Room
- No Onward Chain



# Longfield Street, Southfields, SW18 5RD



Energy Efficiency Rating		Current	Potential
Very energy efficient - lower running costs			
(92+)	<b>A</b>		
(81-91)	<b>B</b>		
(69-80)	<b>C</b>	75	79
(55-68)	<b>D</b>		
(39-54)	<b>E</b>		
(21-38)	<b>F</b>		
(1-20)	<b>G</b>		
Not energy efficient - higher running costs			
England, Scotland & Wales		EU Directive 2002/91/EC	

## Leasehold

Internal area  
 Approximate gross internal area:  
**Total 1083 sq ft/ 100.7 sq m**



## Longfield Street

**Winkworth**

Approximate Gross Internal Area Total = 100.7 sq m / 1083 sq ft

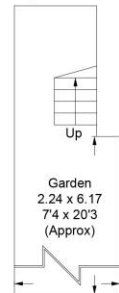


**First Floor**  
Sq m 54.2 / Sq ft 583

**Second Floor**  
Sq m 43.7 / Sq ft 470



**Ground Floor**  
Sq m 2.8 / Sq ft 30



(Not Shown In Actual  
Location / Orientation)

Illustration for identification purposes only, measurements are approximate, not to scale. FloorplansUsketch.com © 2020 (ID673771)

W621 Ravensworth 01670 713330

**Winkworth**

Under the Property Misdescriptions Act these particulars are intended as a guide and act as information only. They give a fair overall description for the guidance of potential purchasers or tenants but do not constitute an offer or part of a contract. All details and approximate measurements are given in good faith and are believed to be correct at the time of printing, but any potential purchasers or tenants should not rely on the mis-statements or representations of fact but must satisfy themselves by inspection or otherwise as to their correctness. No employee of Winkworth has authority to make or give any representation or warranty to this property.

Southfields office 241 Wimbledon Park Road, London SW18 5RJ | Tel: 0208 877 1000 | E-mail: Southfields@winkworth.co.uk  
[winkworth.co.uk](http://winkworth.co.uk)