



## FLORENCE HOUSE, SHOOTERS HILL, LONDON, SE18 £1,950 PER MONTH

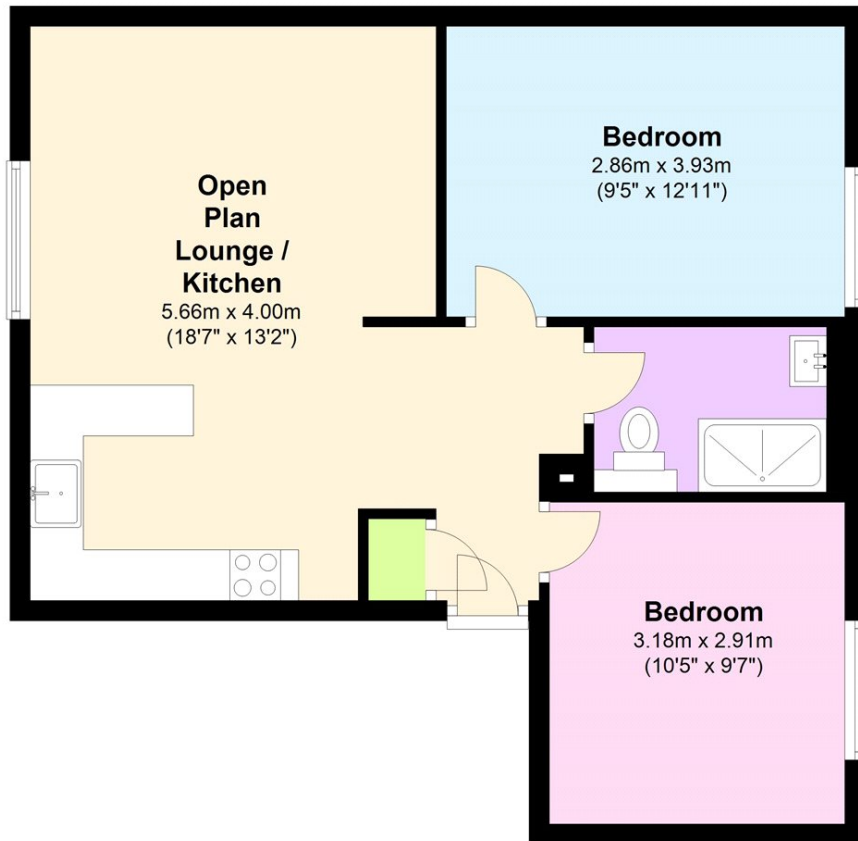
### DESCRIPTION:

A stunning two double bedroom apartment with amazing views set within the historic Royal Herbert Pavilions with seven acres of grounds, fitness centre, swimming pool and tennis courts. Offered furnished and available from early/mid-October 2025.

**Blackheath** | 0208 8520999 | [blackheath@winkworth.co.uk](mailto:blackheath@winkworth.co.uk)

## Second Floor

Approx. 51.6 sq. metres (555.5 sq. feet)



Total area: approx. 51.6 sq. metres (555.5 sq. feet)

This floorplan is for illustration purposes only and is not to scale. The position and size of doors, windows, appliances and other features are approximate.

Score	Energy rating	Current	Potential
92+	A		
81-91	B		
69-80	C		
55-68	D		65 D
39-54	E	51 E	
21-38	F		
1-20	G		

**Deposit: £2,250.00**

**Holding Deposit:**

**Council Tax Band:**

Where no figures are shown, we have been unable to ascertain the information. All figures that are shown were correct at the time of printing.