



Victory House, Trafalgar Street, London, SE17

£385,000 Share of Freehold

A fantastic two-bedroom flat on the quiet Trafalgar Street around the corner from Walworth Road and the famous East Street market.

LOCATION

Trafalgar Street is within proximity to Walworth Road, where there are plenty of local amenities to include: restaurants, local supermarkets and high street shops. Burgess Park is a stone's throw away, offering tennis courts, an outdoor gym and a café.

DESCRIPTION

The flat is situated on the top floor of this purpose built block with two double bedrooms, kitchen, reception room and bathroom. There are engineered wooden floors throughout the property, which creates a lovely feel as you walk through the flat.

Both bedrooms have enough space for a double bed and wardrobes for storage. There are large windows allowing light to flood through the bedrooms.

The reception room has enough space for a medium sized sofa and armchair as well as space for a dining table.

A well-functioning kitchen lies in the heart of the flat. You'll find a gas hob and oven, an extractor fan, space for a washing machine, fridge freezer and plenty of storage.

The bathroom contains a shower with a screen, sink basin and w/c. The bathroom is finished with black and white tiles and a window providing natural light.

Private parking can be found at the rear of the property for the building.

Council Tax Band - B

Ground Rent - £0.00

Service Charge - £2000.00 per annum

LOCAL AUTHORITY

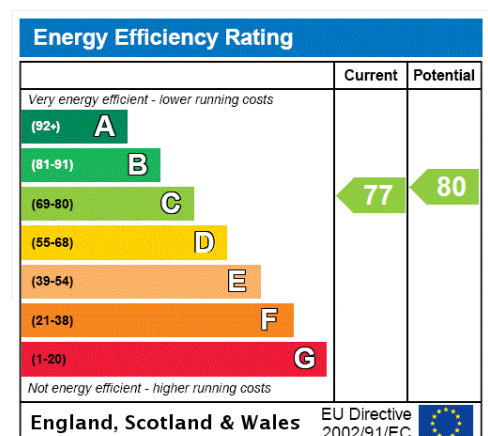
London Borough Of Southwark

TENURE

Share of Freehold

DIRECTIONS

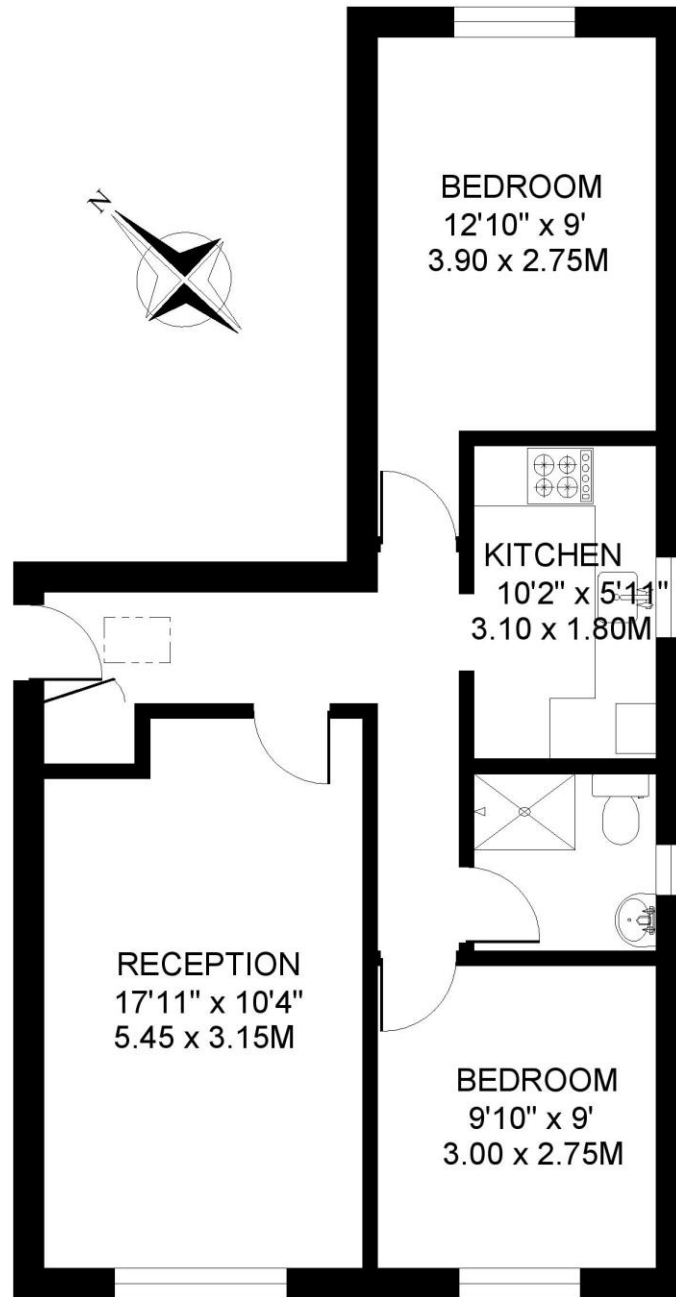
Elephant and Castle Station and Underground (Bakerloo and Northern Line) is approximately 0.9 miles away. Kennington Station (Both branches of the Northern Line) is approximately 0.9 miles away. A wide variety of buses can be caught from Walworth Road which is approximately 0.5 miles away.





VICTORY HOUSE SE17
2 BEDROOM FLAT

Approximate gross floor area
596 SQ.FT. / 55.3 SQ.M.



SECOND FLOOR

This floorplan is for illustration purposes only and is not to scale. The position and size of doors, windows, appliances and other features are approximate.

Copyright: These plans should not be reproduced by any other person, without permission.
Floorplan produced for Winkworth by Floorplanners 07801 228850

Kennington | 020 7587 0600 | kennington@winkworth.co.uk