



Winkworth
for every step...

2  2  1  EPC = D

FLAT 1 FULMER COURT, HIGHCLIFFE BH23 5DX PRICE £525,000 SHARE OF FREEHOLD

Winkworth
for every step...

A beautiful fully-refurbished flat with stunning sea views.

Flat 1 Fulmer Court, Highcliffe BH23 5DX
Price £525,000 [Share of Freehold](#)

01425 270 055
highcliffe@winkworth.co.uk

Location:

The property is situated in a convenient location with the village of Highcliffe circa *0.5m away which offers an array of cafes, restaurants, shops and a supermarket with more extensive facilities slightly farther afield at Christchurch, Bournemouth, or Southampton.

Hinton Admiral, a mainline train station, is circa *1.4m away, with a regular service to Bournemouth, Southampton, and London Waterloo.

Highcliffe and surrounding area benefits with some of the area's most beautiful sandy beaches and coastline, circa *0.3m to Highcliffe Beach.

A short journey from the property is the New Forest National Park offering some of the country's most stunning countryside interwoven with ancient woodlands.

The property is also located within the popular Highcliffe School and Highcliffe St Marks Primary School catchment areas.

Source *Google Maps

Description:

Fully refurbished throughout, this exceedingly stylish modern flat is very close to Highcliffe's beautiful beach and features:

A bright and spacious entrance hall with ample storage cupboards.

A large stunning south facing living room providing ample space for living and dining, with sliding doors opening onto the private patio affording simply stunning views of Christchurch Bay, Mudeford and beyond to the Purbecks in the distance.

Stylish kitchen with beautiful ultra-high gloss handleless units and quartz work surfaces. Fitted with integrated appliances including a built-in fridge freezer, Neff self-cleaning oven, Zanussi induction hob and Bosch built in microwave and dishwasher. The stunning sea views can also be enjoyed from the kitchen through the large dining room pass.

The dining room/study is a good size room providing versatile accommodation.

Beautifully fitted bathroom with full suite and shower over the bath. Separate cloakroom with W/C and utility cupboard with space & plumbing for washing machine and tumble dryer.

Two generously sized double bedrooms both with fitted wardrobes.

Single garage in nearby block.

Well maintained communal gardens with stunning sea views.

Summary:

- Fully refurbished ground floor flat
- Two bedrooms
- Fitted kitchen
- Bathroom
- Two reception rooms
- Private patio
- Communal Gardens
- Garage and off-street parking
- Share of Freehold
- BCP Council tax band D
- Service charge - c.£1,800 PA + £400 PA sinking fund
- Lease length – c.175 years remaining

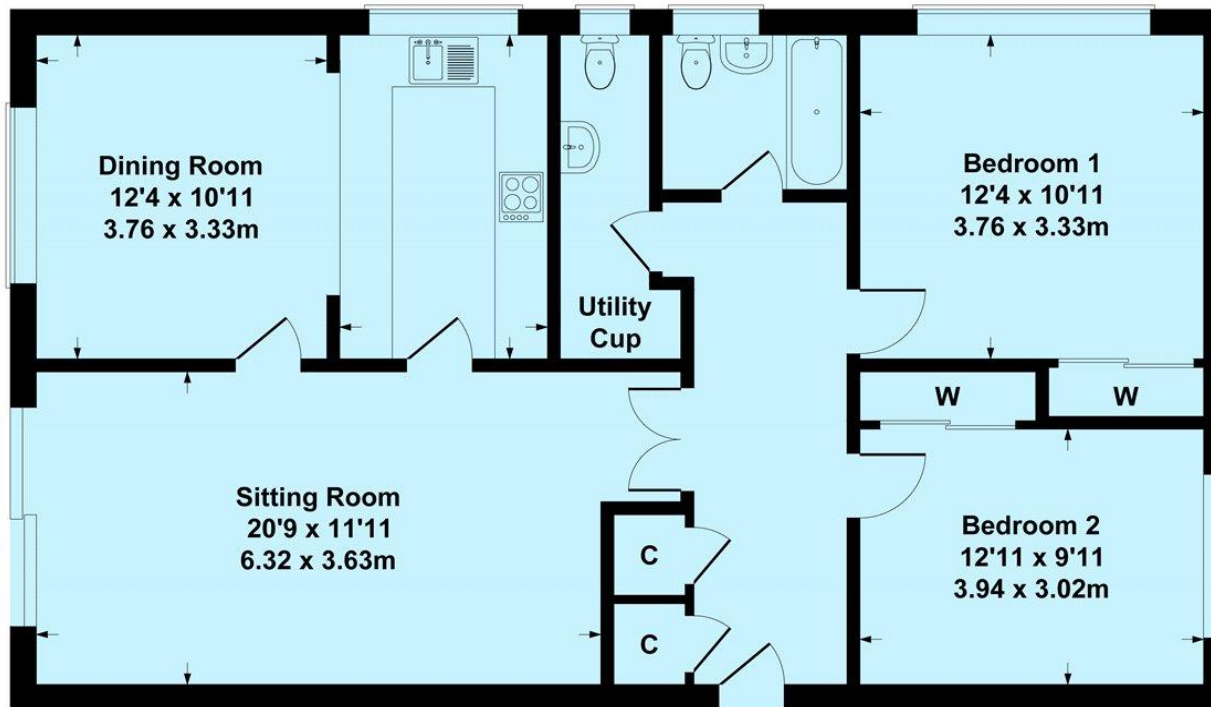
Directions:

From the Highcliffe office turn left and continue on the Lymington Road. Turn left onto Wharncliffe Road and take first right onto Beacon Drive. Follow the road round and take the third turning right onto Ranelagh Road and first left onto Arundel Way where the block can be located on the left.



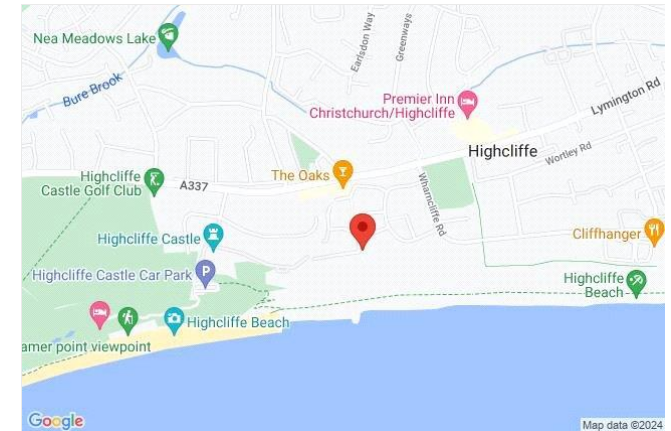
1 Fulmer Court

Approximate Gross Internal Area
1087 sq ft - 107 sq m



SKETCH PLAN FOR ILLUSTRATIVE PURPOSES ONLY
All measurements walls, doors, windows, fittings and appliances, their sizes and locations, are approximate only. They cannot be regarded as being a representation by the seller, nor their agent.

Produced by Potterplans Ltd. 2021



Energy Efficiency Rating		
	Current	Potential
Very energy efficient - lower running costs		
(92+) A		
(81-91) B		
(69-80) C		79
(55-68) D	68	
(39-54) E		
(21-38) F		
(1-20) G		
Not energy efficient - higher running costs		
England, Scotland & Wales EU Directive 2002/91/EC		

Winkworth wishes to inform prospective buyers and tenants that these particulars are a guide and act as information only. All our details are given in good faith and believed to be correct at the time of printing but they don't form part of an offer or contract. No Winkworth employee has authority to make or give any representation or warranty in relation to this property. All fixtures and fittings, whether fitted or not are deemed removable by the vendor unless stated otherwise and room sizes are measured between internal wall surfaces, including furnishings.