



FORD VALLEY, DARTMOUTH
£299,000 FREEHOLD

A TWO BEDROOMED END OF TERRACE HOME CLOSE TO THE TOWN CENTRE WITH A GARAGE.

Dartmouth | 01803 832288 | dartmouth@winkworth.co.uk 3a Market
Street, Dartmouth, TQ6 9QE

Winkworth

for every step...

winkworth.co.uk



SUMMARY: A well presented two bedroomed home with a lovely front terrace and a single garage.

DIRECTIONS: Turn right from the Market Square into Victoria Road. Drive up Victoria Road past the bowling green on your right and 100 yards up Victoria Road turn right into Ford Valley. No.20 is approximately 45 yards along on your right.

DESCRIPTION: South facing, walk to town, and a garage! A character ornamental fireplace for the winter, and a lovely front patio/terrace to enjoy the Summer. Maintained to a very good standard by the present owner, this house is ready to move in and enjoy.

SINGLE LOCKUP GARAGE: With electricity and water

TERRACE/PATIO

TWO BEDROOMS

CHARACTER FEATURES: - Sunny sitting room with bay window.

Separate dining room with ornamental fireplace.

Shower room with W.C and wash hand basin.

Family Bathroom with W.C and wash hand basin.

OUTSIDE: From the garage at street level, steps ascend to the property. A lovely south facing terrace/patio is at the front of the house. The ideal place to enjoy those morning and afternoon teas.

To the rear of the property is a garden, just waiting for the botanical enthusiast to get their hands on.

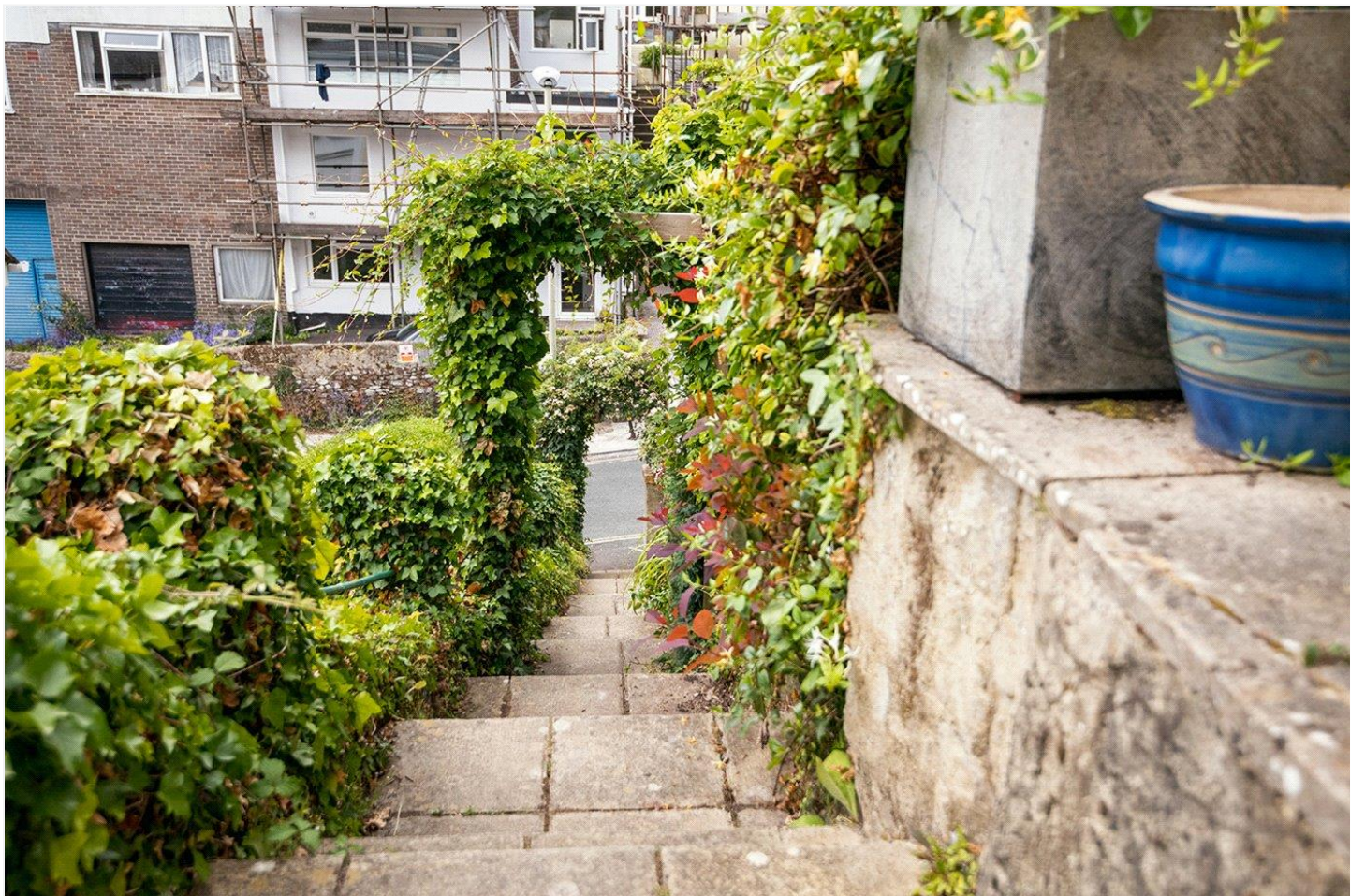
COUNCIL TAX BAND: C

EPC RATING: D

POSTCODE: TQ6 9ED

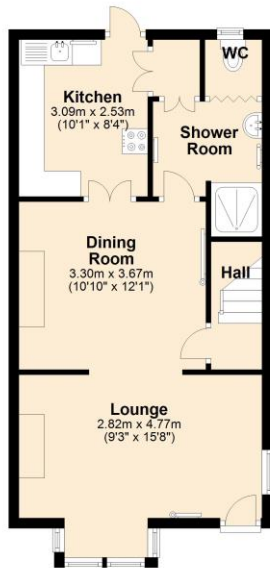
SERVICES: All mains services are connected





Ground Floor

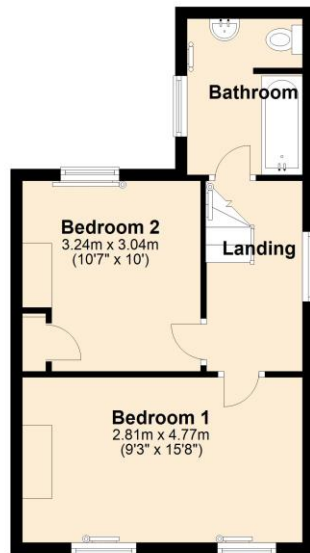
Approx. 46.2 sq. metres (497.0 sq. feet)



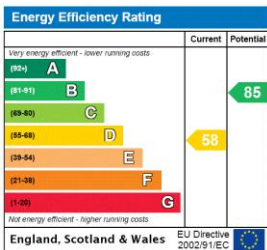
Total area: approx. 80.9 sq. metres (870.9 sq. feet)

First Floor

Approx. 34.7 sq. metres (373.9 sq. feet)



This floorplan is for illustration purposes only and is not to scale. The position and size of doors, windows, appliances and other features are approximate.



Dartmouth | 01803 832288 | dartmouth@winkworth.co.uk
3a Market Street, Dartmouth, TQ6 9QE



for every step...

winkworth.co.uk

Winkworth wishes to inform prospective buyers and tenants that these particulars are a guide and act as information only. All our details are given in good faith and believed to be correct at the time of printing but they don't form part of an offer or contract. No Winkworth employee has authority to make or give any representation or warranty in relation to this property. All fixtures and fittings, whether fitted or not are deemed removable by the vendor unless stated otherwise and room sizes are measured between internal wall surfaces, including furnishings.