

DAWES ROAD, SW6 £2,750 PER MONTH

Tucked away within the sought-after Regal Court on Dawes Road, this unique split-level apartment offers both space and character in the heart of Fulham.

Fulham & Parsons Green | 020 7731 3388 | fulham@winkworth.co.uk

Tenant Fees Apply: Details of fees for tenant referencing, tenancy agreement admin fees and renewal fees are available on the Winkworth website and the link can be found with the displayed rent for the property. Tenants should ensure they are fully conversant with these upfront fees and other costs that are involved at the outset of the tenancy before making an offer to rent and your local Winkworth office will provide written details upon request.

winkworth.co.uk

Winkworth

for every step...



Spanning approximately 795 sq ft, the property is arranged over the second and third floors, creating a wonderful sense of light and airiness enhanced by its high ceilings and large windows.

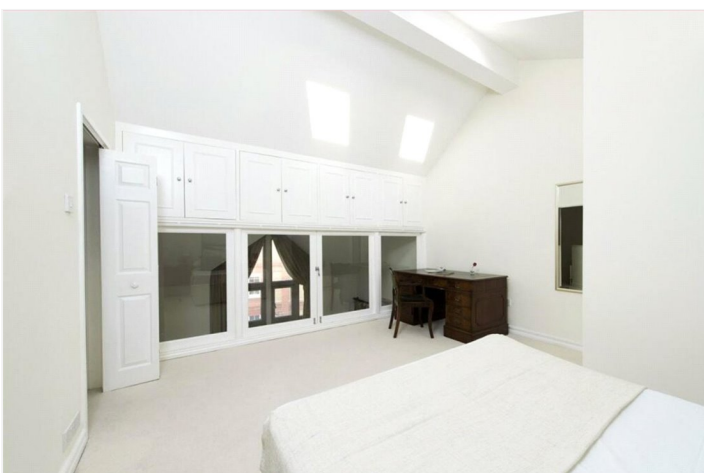
There is a generous reception room with striking double-height ceilings and wood floors, offering the ideal space for both entertaining and everyday living. From here, French doors lead out onto a private balcony, while an open-plan kitchen sits neatly to the side, fully fitted with modern appliances and finished with sleek cabinetry. The clever layout maximises the sense of openness, allowing natural light to pour through the space.

There are two well-proportioned double bedrooms, each thoughtfully positioned across the two levels, providing privacy and flexibility for those working from home. The principal bedroom occupies the upper floor and features excellent storage, while the second bedroom on the lower level is complemented by a stylish bathroom finished in neutral tones. A further shower room on the top floor serves the master suite.

The property benefits from ample storage solutions throughout, including cleverly integrated spaces and over-height cupboards, ensuring practicality matches style. The shared terrace offers residents an additional outdoor retreat, perfect for enjoying sunny afternoons or unwinding after a long day.

Situated at the Fulham Broadway end of Dawes Road, the apartment is ideally positioned for the wealth of local amenities and independent restaurants on your doorstep. Fulham Broadway underground station (District Line) is just 0.3 miles away, providing swift access into central London and beyond.

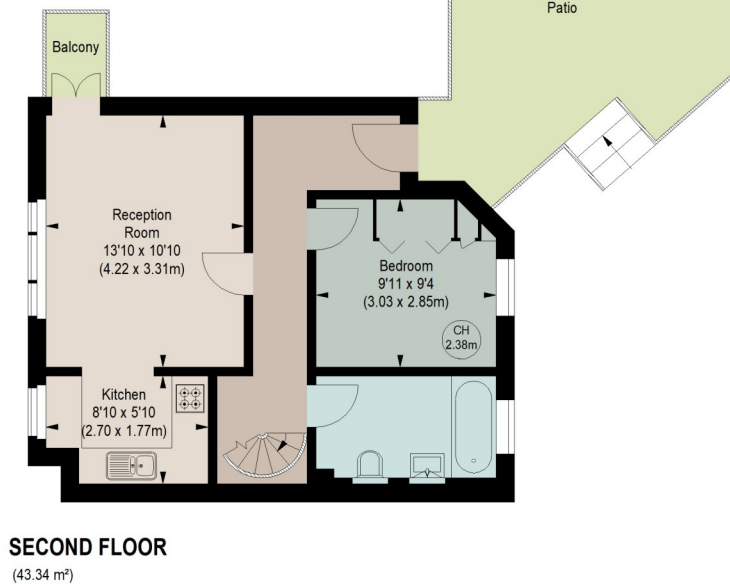
With its distinctive layout, modern finishes, and enviable location, this two-bedroom, two-bathroom apartment at Regal Court makes for an exceptional rental opportunity in the heart of Fulham.





REGAL COURT, SW6

Approximate gross internal area
795 sq ft / 73.86 sq m



The floor plan is not to scale and measurements and areas shown are approximate and therefore should be used for illustrative purposes only. The plan has been prepared in accordance with the RICS code of Measuring Practice and whilst we have confidence in the information produced, it must not be relied on. If there is any aspect of particular importance, you should carry out or commission your own inspection of the property.

This floorplan is for illustration purposes only and is not to scale. The position and size of doors, windows, appliances and other features are approximate.

Fulham & Parsons Green | 020 7731 3388 | fulham@winkworth.co.uk

Winkworth

for every step...

winkworth.co.uk

Winkworth wishes to inform prospective buyers and tenants that these particulars are a guide and act as information only. All our details are given in good faith and believed to be correct at the time of printing but they don't form part of an offer or contract. No Winkworth employee has authority to make or give any representation or warranty in relation to this property. All fixtures and fittings, whether fitted or not are deemed removable by the vendor unless stated otherwise and room sizes are measured between internal wall surfaces, including furnishings.