



HERBERT MEWS, SW2  
**£1,850 PER MONTH FURNISHED**

**A TWO DOUBLE BEDROOM FLAT IN A  
LUXURY MODERN GATED DEVELOPMENT  
IDEALLY LOCATED FOR BRIXTON AND HERNE  
HILL**

Herne Hill | 0207 501 8950 | hernehill@winkworth.co.uk

**Winkworth**

for every step...

*winkworth.co.uk*



## DESCRIPTION:

We are delighted to present to let this well presented two double bedroom first floor flat located on the ever-popular Brockwell Gate development. This property comprises two well-proportioned double bedrooms with ample storage, a bright reception/diner to the front with French doors to the Juliet Balcony, a modern fitted kitchen equipped with the usual appliances including a dishwasher, washing machine and microwave. There is a large bathroom with a shower over the bath, a WC and a wash hand basin - this is accessed via a Jack and Jill door. The property is double glazed throughout (with plantation shutters) and is exceptionally quiet due to its location on the development. The flat also benefits from designated parking. The property is ideally located for the transport links and amenities of Brixton, Herne Hill and Tulse Hill with the added bonus of direct access from the grounds of the development to the lovely Brockwell Park. Available now on a furnished basis.

## AT A GLANCE

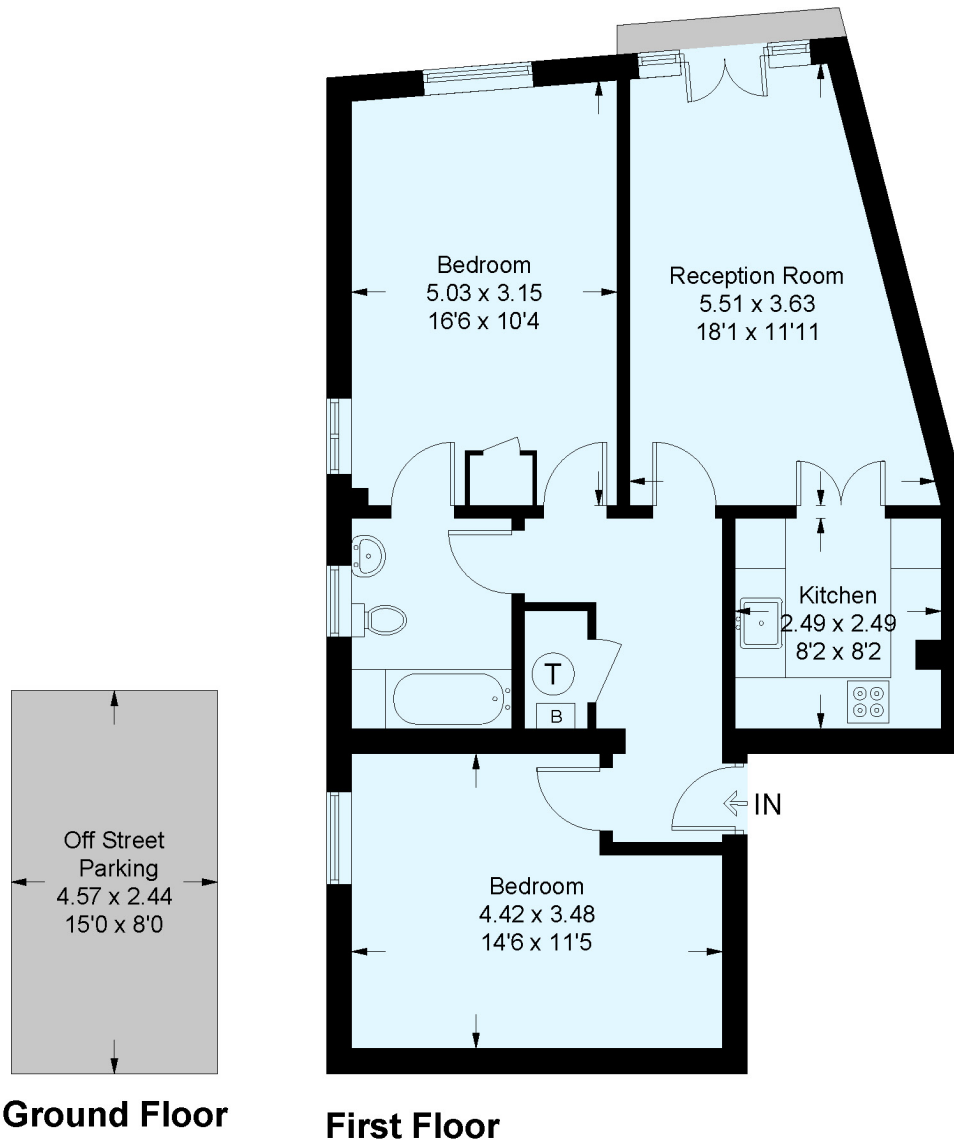
- Gated Development
- First Floor (with Lift)
- Two Double Bedrooms
- Reception/Diner
- Modern Kitchen
- Bathroom
- Designated Parking
- Communal Bike Storage
- Furnished
- Available Now





# Hunter Court, Herbert Mews, SW2

Approximate Floor Area = 68.2 sq m / 734 sq ft  
Including Limited Use Area (0.8 sq m / 9 sq ft)



This plan is for layout guidance only. Not drawn to scale unless stated. Windows and door openings are approximate. Whilst every care is taken in the preparation of this plan, please check all dimensions, shapes and compass bearings before making any decisions reliant upon them. (ID843959)

This floorplan is for illustration purposes only and is not to scale. The position and size of doors, windows, appliances and other features are approximate.

Herne Hill | 0207 501 8950 | hernehill@winkworth.co.uk

**Winkworth**

for every step...

[winkworth.co.uk](http://winkworth.co.uk)

Winkworth wishes to inform prospective buyers and tenants that these particulars are a guide and act as information only. All our details are given in good faith and believed to be correct at the time of printing but they don't form part of an offer or contract. No Winkworth employee has authority to make or give any representation or warranty in relation to this property. All fixtures and fittings, whether fitted or not are deemed removable by the vendor unless stated otherwise and room sizes are measured between internal wall surfaces, including furnishings.