



LONSDALE PLACE, LONDON, N1
£1,150,000 FREEHOLD

A UNIQUE, THREE BEDROOM, TWO
BATHROOM FAMILY HOME POSITIONED IN
THE HEART OF BARNSBURY, N1.

Highbury | 0207 989 7000 | highbury@winkworth.co.uk

Winkworth

winkworth.co.uk

See things differently



DESCRIPTION:

A sensational, three-bedroom, two-bathroom, freehold house positioned in the heart of Barnsbury. Standing in excess of 1,100 sqft, the property offers tremendous kerb appeal with private parking available outside the building and a aesthetically pleasing circular window allowing for plentiful light throughout the house. The first floor benefits from a welcoming, open plan, living room/kitchen/dining area creating the perfect entertaining space. A west facing balcony can also be accessed from the wonderfully open space. The ground floor includes three good sized bedrooms, the master bedroom featuring an ensuite bathroom and access to a sun trapped patio area. The property is completed with a family bathroom and large hallway making the ideal work from home space.

Lonsdale Place is ideally located within easy reach of the many bars, shops and restaurants of fashionable Upper Street, and with a number of acclaimed gastropubs in the immediate vicinity. The property also benefits from excellent transport links. Angel station offers the closest underground service on the Northern line, with Caledonian Road & Barnsbury, Kings Cross and Highbury & Islington also within walking distance providing underground and overground services across London.

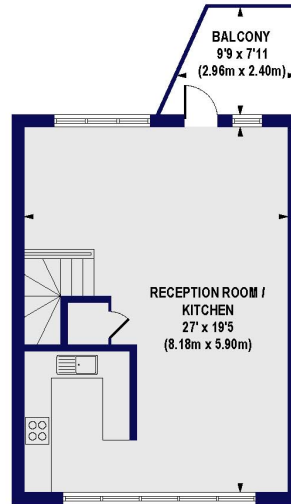
Winkworth



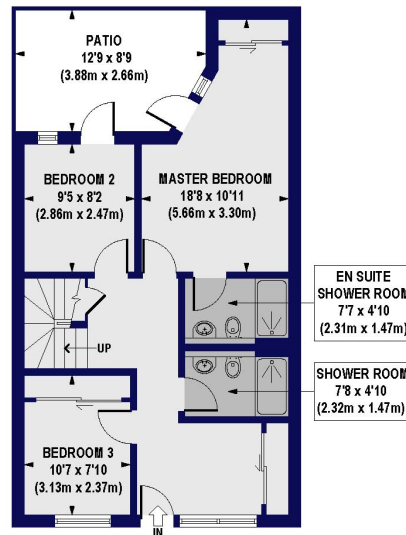
Winkworth

Lonsdale Place, N1

Approx. Gross Internal Floor Area 1104 sq. ft / 102.63 sq. m



FIRST FLOOR
GROSS INTERNAL
FLOOR AREA 519 SQ FT

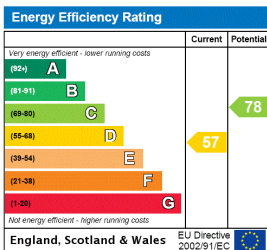


GROUND FLOOR
GROSS INTERNAL
FLOOR AREA 585 SQ FT

All measurements of walls, doors, windows, fittings and appliances, including their size and location, are shown as standard sizes and do not constitute any warranty or representation by the seller, their agent or CP Creative. Any intending purchaser must satisfy himself by inspection or otherwise as to the correctness of the information contained in these plans. This plan is for illustrative purposes only and should be used as such by any prospective purchasers.

Winkworth

This floorplan is for illustration purposes only and is not to scale. The position and size of doors, windows, appliances and other features are approximate.



Highbury | 0207 989 7000 | highbury@winkworth.co.uk



winkworth.co.uk

See things differently

Winkworth wishes to inform prospective buyers and tenants that these particulars are a guide and act as information only. All our details are given in good faith and believed to be correct at the time of printing but they don't form part of an offer or contract. No Winkworth employee has authority to make or give any representation or warranty in relation to this property. All fixtures and fittings, whether fitted or not are deemed removable by the vendor unless stated otherwise and room sizes are measured between internal wall surfaces, including furnishings.