

Chelsea Embankment, London, SW3
£2,500,000 *LEASEHOLD*

3  1  2 



Winkworth Knightsbridge
020 7589 6616 | knightsbridge@winkworth.co.uk

Winkworth

for every step...

Riverside charm with modern comfort and convenience

ABOUT THIS HOUSE

Situated in a sought-after location, this period terraced apartment on the second floor offers a lift for convenience. Currently arranged as two bedrooms, albeit with the ability to create a third bedroom (as demonstrated on the proposed floor plan). Enjoy the stunning river view from the balcony, perfect for relaxing or entertaining guests. Residents parking is also available.

This apartment offers a modern and comfortable living space, with ample natural light throughout and modern convenience throughout.

KEY FEATURES

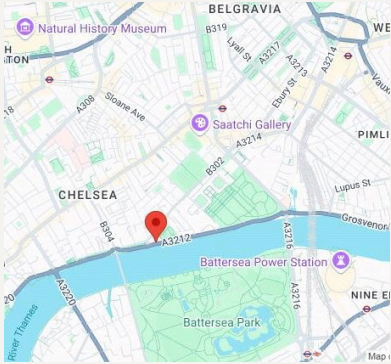
- 3 bedrooms
- 1 reception room
- 2 bathrooms
- 1,410 Square Feet
- Upper floor with lift
- Decorated to a high standard











FINER DETAILS

- 3 bedrooms
- 1 reception room
- 2 bathrooms
- 1,410 Square Feet
- Upper floor with lift
- Decorated to a high standard

Leasehold: 977 Years

Service Charge: £10,800pa

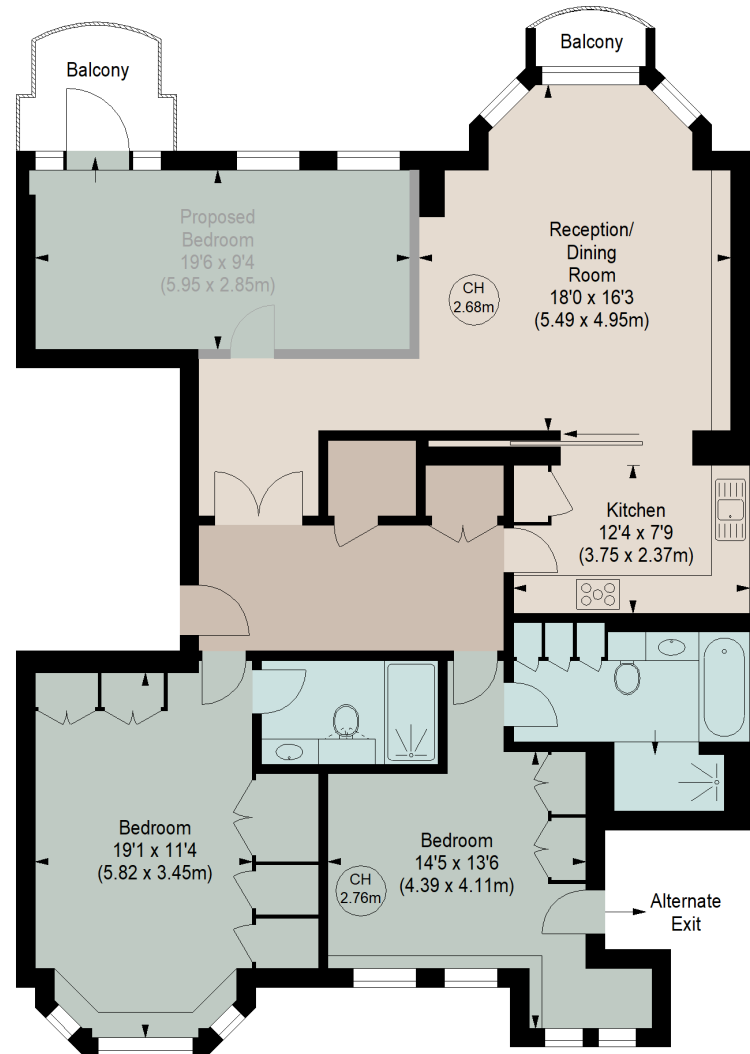
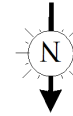
Energy Efficiency Rating		
	Current	Potential
Very energy efficient - lower running costs		
(92+) A		
(81-91) B		
(69-80) C		80
(55-68) D	61	
(39-54) E		
(21-38) F		
(1-20) G		
Not energy efficient - higher running costs		
England, Scotland & Wales	EU Directive 2002/91/EC	

CHELSEA EMBANKMENT, SW3

Approximate gross internal area

1410 sq ft / 130.99 sq m

Key :
CH - Ceiling Height



SECOND FLOOR

Although every attempt has been made to ensure accuracy, all measurements are approximate.
This floorplan is for illustrative purposes only and not to scale.
Measured in accordance with RICS standards.



Winkworth Knightsbridge
020 7589 6616 | knightsbridge@winkworth.co.uk

Winkworth

for every step...