



LANGLEY COMMON ROAD, WOKINGHAM, BERKSHIRE, RG40
£220,000 LEASEHOLD

Winkworth



LANGLEY COMMON ROAD, WOKINGHAM, BERKSHIRE, RG40

A well presented 2 bedroom park home for the over 55's on the exclusive Oaklands Park development.

With beautiful views overlooking the paddock, this home is one of a kind on the site, offering well planned and spacious accommodation.

As you enter the property you are greeted into a hallway with the living/dining room to the left, kitchen immediately in front of you and bedrooms and bathrooms to the right. All rooms have plenty of natural light flooding through the double glazed windows. Both bedrooms accommodate double beds with the master having an en suite and a walk-in wardrobe.

Located in a fantastic area, Oaklands Park has easy access to public transport links which can take you to Wokingham or Reading. There are also plenty of countryside walks closeby.



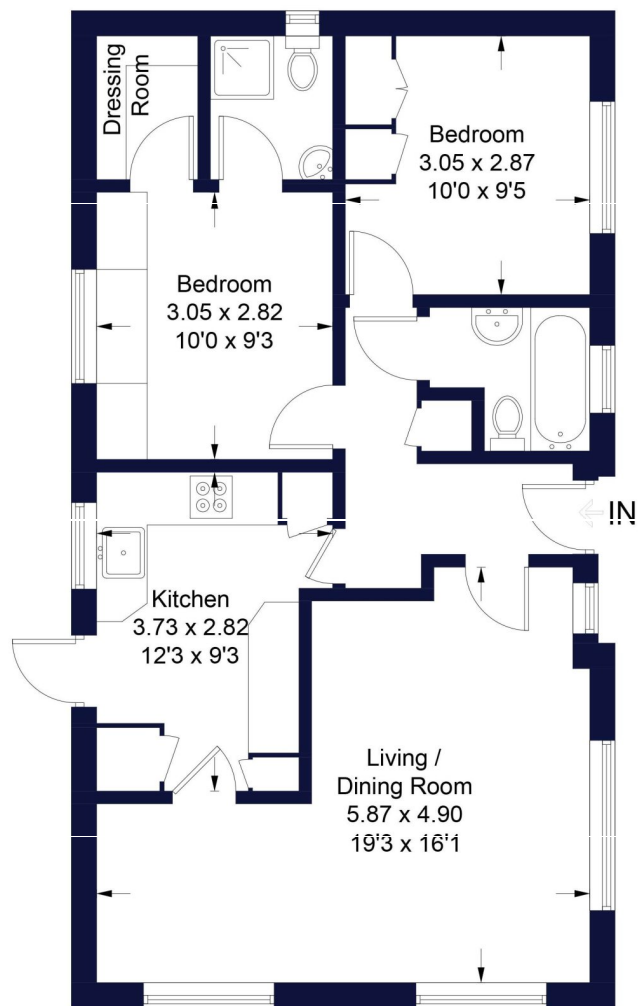




Oaklands Park

Winkworth

Approximate Gross Internal Area Total = 65.0 sq m / 700 sq ft



Ground Floor

Illustration for identification purposes only, measurements are approximate, not to scale. FloorplansUsketch.com © 2023 (ID987366)

Wokingham | 01189 072777 | wokingham@winkworth.co.uk

winkworth.co.uk

Winkworth wishes to inform prospective buyers and tenants that these particulars are a guide and act as information only. All our details are given in good faith and believed to be correct at the time of printing but they don't form part of an offer or contract. No Winkworth employee has authority to make or give any representation or warranty in relation to this property. All fixtures and fittings, whether fitted or not are deemed removable by the vendor unless stated otherwise and room sizes are measured between internal wall surfaces, including furnishings.

Winkworth