



FLETCHER ROAD, LONDON, W4  
**£1,050,000 FREEHOLD**

## WELL PRESENTED AND WIDER THAN AVERAGE FOUR BEDROOM MID TERRACED FAMILY HOME

Chiswick | 020 8994 7096 | [chiswick@winkworth.co.uk](mailto:chiswick@winkworth.co.uk)

**Winkworth**

for every step...

[winkworth.co.uk](http://winkworth.co.uk)



## DESCRIPTION:

A well-appointed, wider than average four-bedroom mid terrace for sale on Fletcher Road, Chiswick, London, W4.

Upon entry one is greeted by a welcoming entrance hall offering access to a spacious double reception/dining room, kitchen/utility area leading onto the extended rear reception with sliding doors onto the well-maintained paved gardens.

Space is a discerning feature of this property, with four spacious bedrooms over the upstairs floors including loft bedroom with en-suite, further family bathroom on the first floor and additional storage to the side.

Well-appointed and spacious houses in such an enviable locale are a rare find, hence an early viewing is highly recommended.

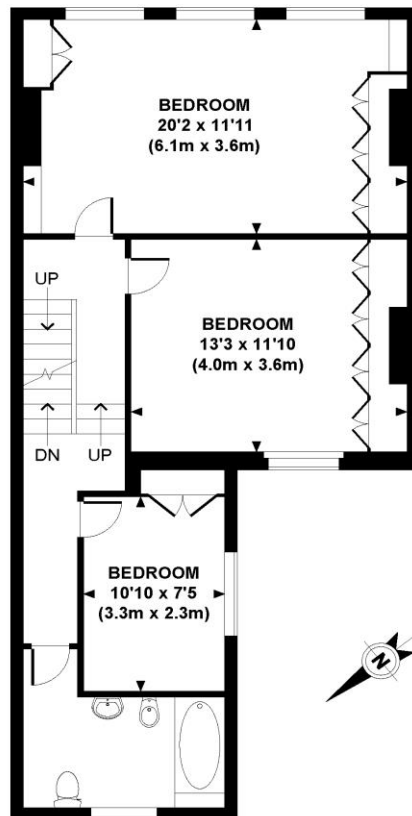
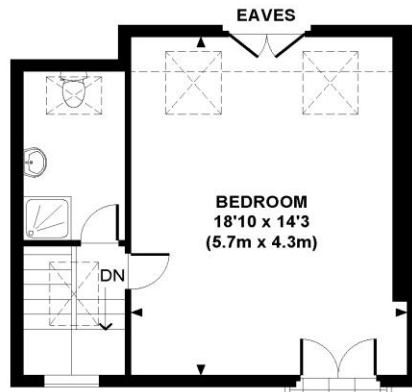
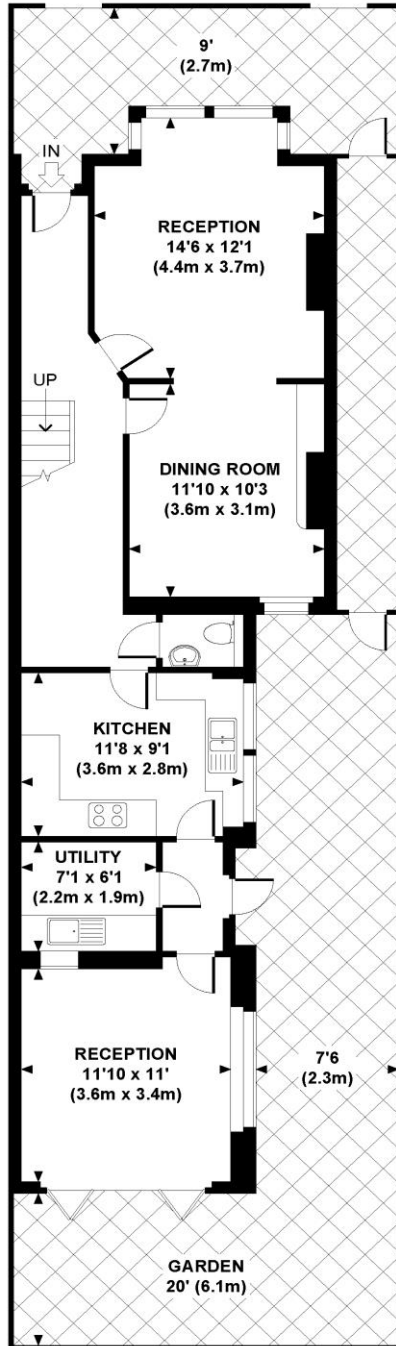
## AT A GLANCE

- Wider than average mid terraced property
- Four bedrooms
- Two bathrooms
- Spacious double reception room
- Kitchen with adjoining utility area
- Rear reception room
- Well maintained rear gardens





## Fletcher Road, W4



APPROXIMATE GROSS INTERNAL AREA 1837 SQ FT / 170.8 SQ M

Whilst every attempt has been made to ensure the accuracy of this floor plan; measurements of door, windows, rooms and all other items are approximate. No responsibility is taken for any error, omission or mis-statement. This floor plan is for illustrative purposes only, and should be treated as such.

This floorplan is for illustration purposes only and is not to scale. The position and size of doors, windows, appliances and other features are approximate.

Chiswick | 020 8994 7096 | [chiswick@winkworth.co.uk](mailto:chiswick@winkworth.co.uk)

**Winkworth**

for every step...

[winkworth.co.uk](http://winkworth.co.uk)

Winkworth wishes to inform prospective buyers and tenants that these particulars are a guide and act as information only. All our details are given in good faith and believed to be correct at the time of printing but they don't form part of an offer or contract. No Winkworth employee has authority to make or give any representation or warranty in relation to this property. All fixtures and fittings, whether fitted or not are deemed removable by the vendor unless stated otherwise and room sizes are measured between internal wall surfaces, including furnishings.