



Heron House, Reading, Berkshire, RG2 0GJ

£1,595 per month *Furnished*



Two bedroom ground floor apartment in the popular Kennet Island Development. Conveniently located close to junction 11 of the M4 and Green Park and offering excellent access in to Reading Town Centre with regular bus services and cycle routes. The accommodation comprises two double bedrooms with built in wardrobes, a three piece bathroom suite, en suite to the master and an open plan lounge and modern fitted kitchen with integrated appliances. The property benefits from a private garden and one allocated parking space. Available 13th November 2025. Furnished.

KEY FEATURES

- Kennet Island development
- Two double bedrooms
- Two bathrooms
- Council tax band C
- Allocated parking space
- Available 13th November
- Furnished

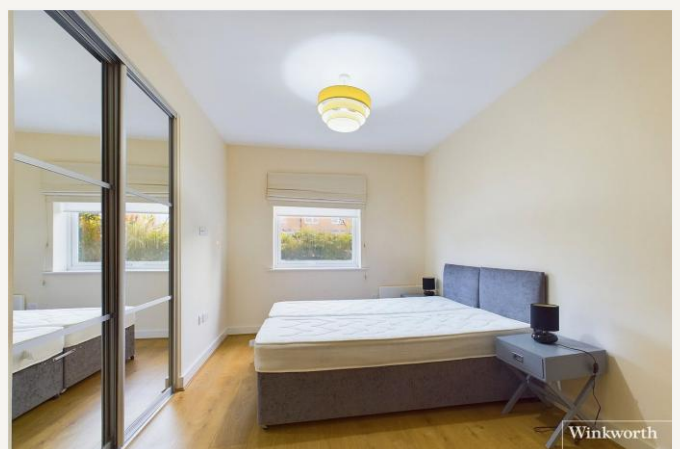


Reading

0118 4022 300 | reading@winkworth.co.uk

Winkworth

for every step...



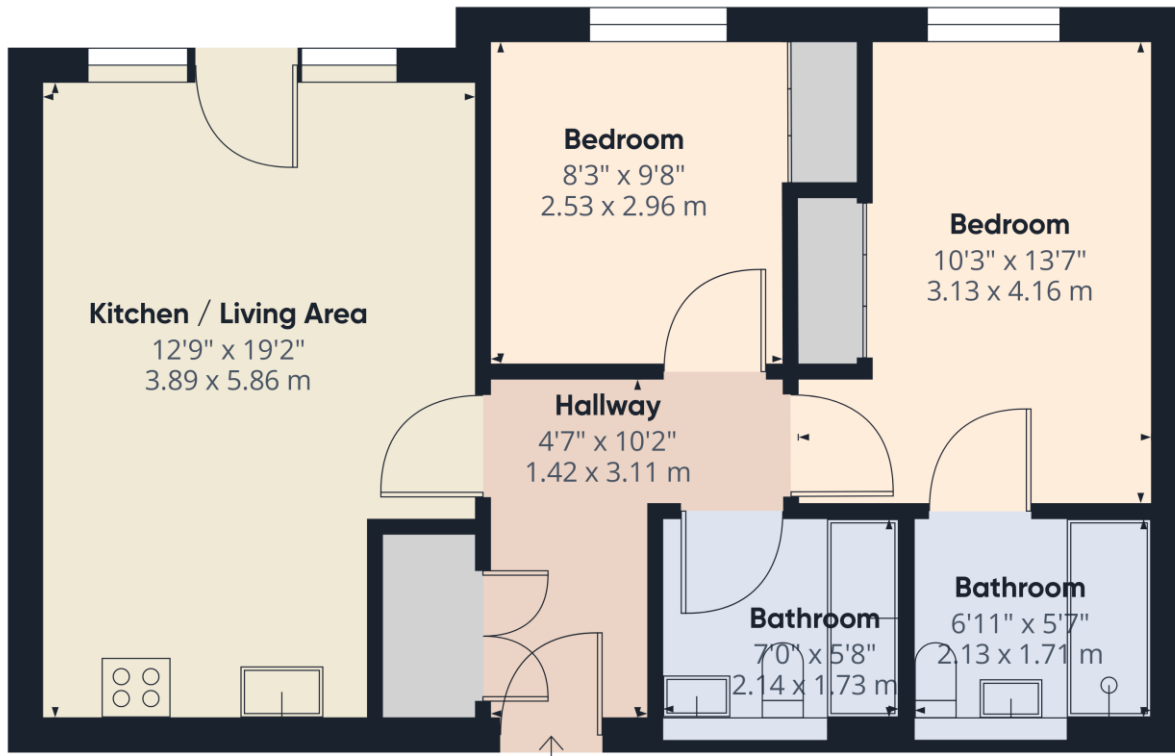


MATERIAL INFO

Deposit: £1,840.38

Holding Deposit: £368.07

Council Tax Band: C



Approximate total area[®]
628.61 ft²
58.4 m²

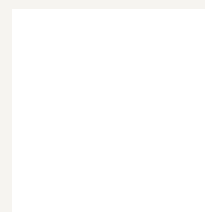
(1) Excluding balconies and terraces

While every attempt has been made to ensure accuracy, all measurements are approximate, not to scale. This floor plan is for illustrative purposes only.

GIRAFFE360

Score	Energy rating	Current	Potential
92+	A		
81-91	B		
69-80	C	72 C	80 C
55-68	D		
39-54	E		
21-38	F		
1-20	G		

For more information, scan the QR code or visit the link below



<https://www.winkworth.co.uk/rent/property/REA170521>

Where no figures are shown, we have been unable to ascertain the information. All figures that are shown were correct at the time of printing.

Reading

0118 4022 300 | reading@winkworth.co.uk

Winkworth

for every step...

Winkworth wishes to inform prospective buyers and tenants that these particulars are a guide and act as information only. All our details are given in good faith and believed to be correct at the time of printing but they don't form part of an offer or contract. No Winkworth employee has authority to make or give any representation or warranty in relation to this property. All fixtures and fittings, whether fitted or not are deemed removable by the vendor unless stated otherwise and room sizes are measured between internal wall surfaces, including furnishings.