



LEWGARS AVENUE, LONDON, NW9
£660,000 FREEHOLD

FOUR BEDROOM END OF TERRACE BLANK CANVAS IN A POPULAR RESIDENTIAL ROAD

Kingsbury | 020 8204 0000 | kingsbury@winkworth.co.uk

Winkworth

winkworth.co.uk

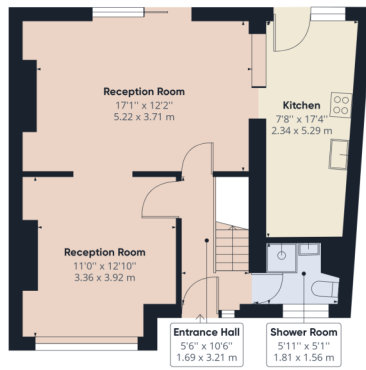
See things differently



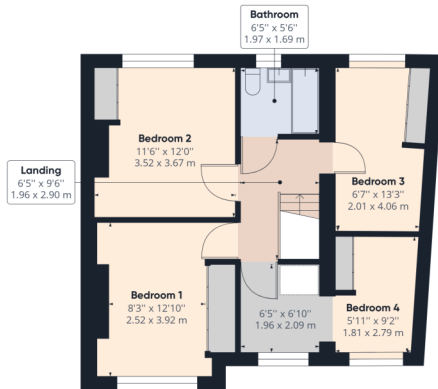
A beautifully well maintained end of terrace blank canvas situated in a popular residential road in Kingsbury nestled just off of Slough Lane and Church Lane. A fondly loved family treasure for 48 years ready for its new owners to put their personal modern mark on; consisting of two ample adjoining reception rooms, a basic kitchen overlooking the garden, and a shower room on the ground floor. The upper level hosts four well-proportioned bedrooms, and a family bathroom. Externally a beautiful, extensive laid to lawn presents a gorgeous outdoor living space boasting peace and privacy, whilst the front driveway allows off street parking for two cars. Considerable scope to extend (STPP). In the catchment area for reputable schools including St Robert Southwell, Fryent Primary, and Kingsbury High. Kingsbury Station (Jubilee Line) and all of Kingsbury's shops, amenities and places of worship are within walking distance. Stunning Fryent Country park lies a couple of minutes' walk away. Chain free. An internal viewing is a must to appreciate this property's potential and location at its entirety.







Ground Floor



Floor 1

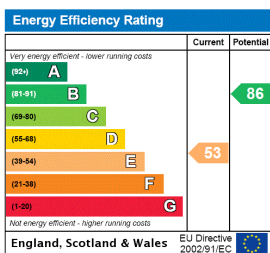
Approximate total area⁽¹⁾
1141.48 ft²
106.05 m²

(1) Excluding balconies and terraces

While every attempt has been made to ensure accuracy, all measurements are approximate, not to scale. This floor plan is for illustrative purposes only.

GIRAFFE360

This floorplan is for illustration purposes only and is not to scale. The position and size of doors, windows, appliances and other features are approximate.



Kingsbury | 020 8204 0000 | kingsbury@winkworth.co.uk

