



BLYTHE HILL PLACE, SE23

GUIDE PRICE £500,000 - £525,000

FREEHOLD

DESCRIPTION:

Guide Price £500,000 - £525,000.

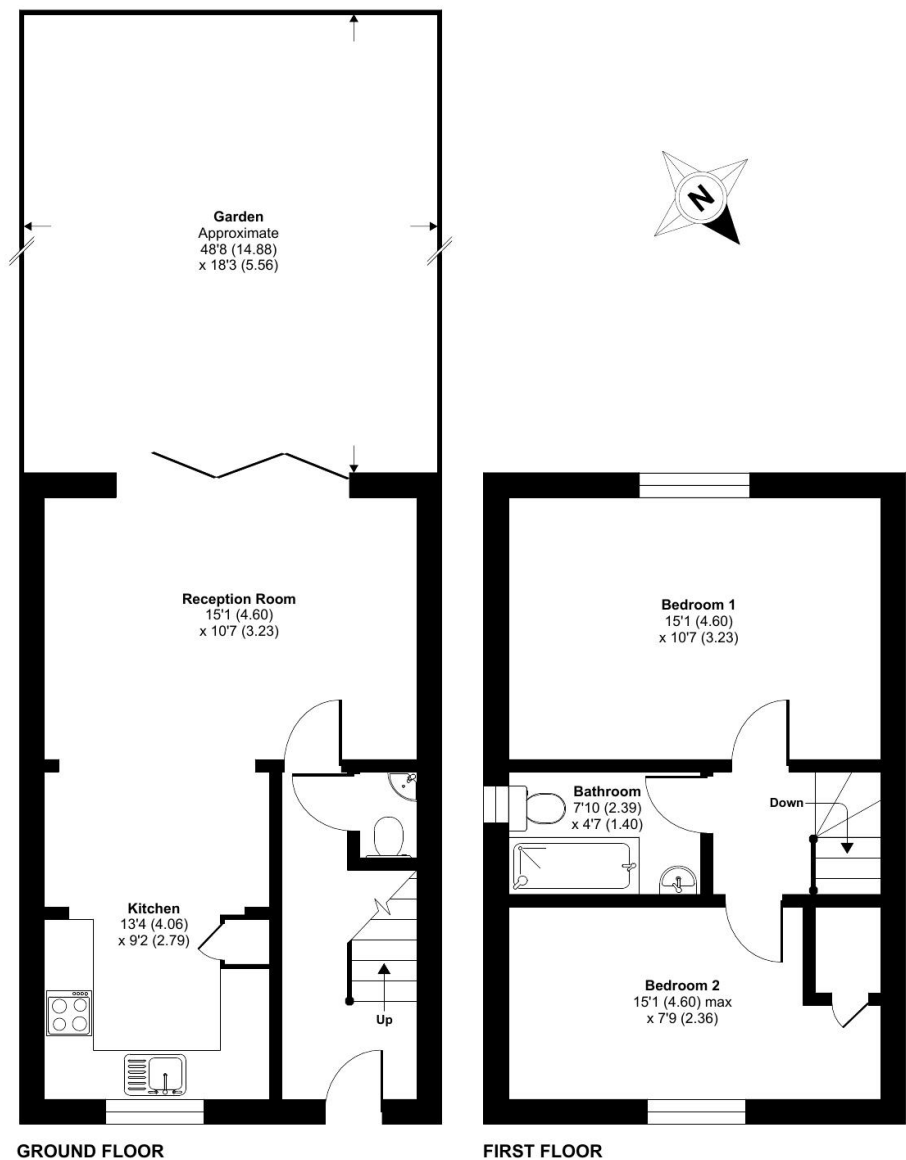
This well-presented end of terrace house features two generous bedrooms, a spacious living area and a modern kitchen. Additional benefits include a south facing garden, off-street parking and a convenient

Forest Hill | | foresthill@winkworth.co.uk

Blythe Hill Place, London, SE23

Approximate Area = 742 sq ft / 68.9 sq m

For identification only - Not to scale



Floor plan produced in accordance with RICS Property Measurement Standards incorporating International Property Measurement Standards (IPMS2 Residential). © nñchecon 2025. Produced for Winkworth Forest Hill and New Cross. REF: 1353743

This floorplan is for illustration purposes only and is not to scale. The position and size of doors, windows, appliances and other features are approximate.
For more details visit: <https://www.winkworth.co.uk/sale/property/CLS210091>

Score	Energy rating	Current	Potential
92+	A		
81-91	B		
69-80	C	73 C	79 C
55-68	D		
39-54	E		
21-38	F		
1-20	G		

Tenure: To be advised

Where no figures are shown, we have been unable to ascertain the information. All figures that are shown were correct at the time of printing.