



Morpeth Terrace, SW1P

£1,850 PER MONTH

FURNISHED

AT A GLANCE

- Heating and Hot Water Included
- Large Studio Flat
- Separate Kitchen
- Separate Bathroom
- Central Location

Winkworth

for every step...



Energy Efficiency Rating		
	Current	Potential
Very energy efficient - lower running costs		
(92-100) A		
(81-91) B		
(69-80) C		
(55-68) D		
(39-54) E		
(21-38) F		
(1-20) G		
Not energy efficient - higher running costs		
	73	80
England, Scotland & Wales		
	EU Directive 2002/91/EC	

MORPETH TERRACE, UK, SW1P

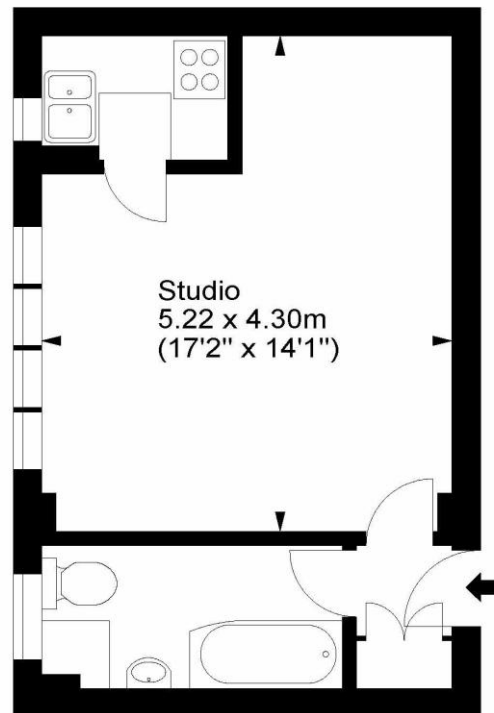
£1,850 PER MONTH

FURNISHED

HEATING AND HOT WATER INCLUDED - A delightful, light and spacious fourth floor studio flat, located in Westminster. The property comprises of large studio room, a separate kitchen and bathroom suite. The property is presented to a good standard and is offered furnished. Residents have lift access.

Ashley Court, SW1

Approx. Gross Internal Area
317 Sq Ft - 29.45 Sq M



Fourth Floor

For illustration purposes only. Not to scale.
All measurements are taken and shown at floor level.
www.r3photography.co.uk © Photography / Floor Plans / Lease Plans / EPCs



winkworth wishes to inform prospective buyers and tenants that these particulars are a guide and act as information only. All our details are given in good faith and believed to be correct at the time of printing but they don't form part of an offer or contract. No winkworth employee has authority to make or give any representation or warranty in relation to this property. All fixtures and fittings, whether fitted or not are deemed removable by the vendor unless stated otherwise and room sizes are measured between internal wall surfaces, including fireplaces.

Pimlico & Westminster | 020 7828 1786 |
pimlico@winkworth.co.uk

winkworth.co.uk/pimlico

Winkworth

for every step...