



Winkworth

Holmesley Road, Hertfordshire, WD6

OIEO £325,000 Leasehold

A Well Presented Two Bedroom, Two Bathroom Second Floor Apartment.

2  1  2 

KEY FEATURES

- Two Bedrooms
- Balcony
- Chain Free
- NHBC Warranty
- Allocated Parking Space
- 659 Square Feet
- Two Bathrooms
- 992 Year Lease
- Visitors Parking and Bike Store



Winkworth



Winkworth

Borehamwood

020 8953 8899 | borehamwood@winkworth.co.uk



Constructed approx. six years ago by the highly regarded and award-winning developers, Bellway Homes, is this well presented two double bedroom, two bathroom second floor apartment situated on the highly desirable Hertsmere Mews development, and within easy access of Borehamwood's bustling High Street with all the amenities and transport links it brings.

Sold with the benefit and peace of mind an NHBC Warranty the property boasts circa 659 square feet of bright and spacious accommodation including balcony and would be ideal for first time buyers, down sizers and investors alike.

MATERIAL INFO

Tenure: Leasehold

Term: 990 year and 6 months

Service Charge: £1400 per annum

Ground Rent: £ 250 Annually (subject to increase)

Council Tax Band: D

EPC rating: C



Approximate Gross Internal Area = 61.2 sq m / 659 sq ft

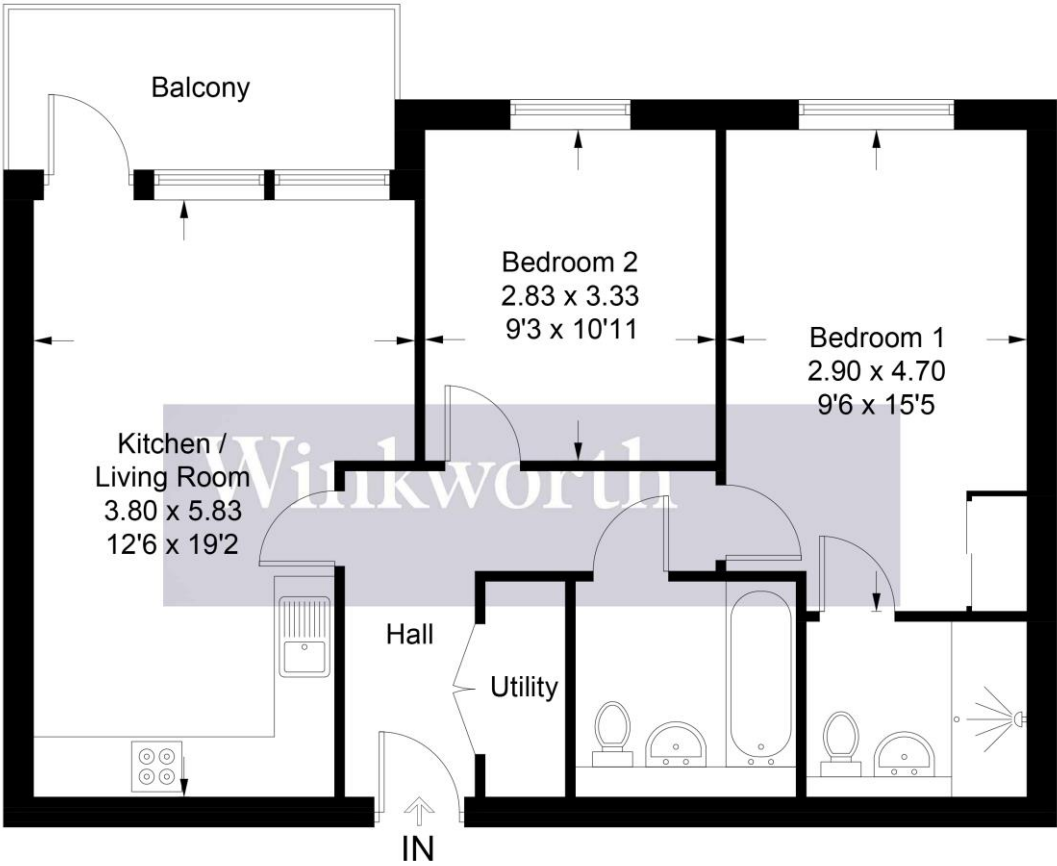


Illustration for identification purposes only, measurements are approximate, not to scale. Winkworth © 2025 (ID1209763)

For more information, scan the QR code or visit the link below



<https://www.winkworth.co.uk/sale/property/BOR230196>

Score	Energy rating	Current	Potential
92+	A		
81-91	B		
69-80	C	79 C	79 C
55-68	D		
39-54	E		
21-38	F		
1-20	G		

Where no figures are shown, we have been unable to ascertain the information. All figures that are shown were correct at the time of printing.

Borehamwood
020 8953 8899 | borehamwood@winkworth.co.uk

Winkworth wishes to inform prospective buyers and tenants that these particulars are a guide and act as information only. All our details are given in good faith and believed to be correct at the time of printing but they don't form part of an offer or contract. No Winkworth employee has authority to make or give any representation or warranty in relation to this property. All fixtures and fittings, whether fitted or not are deemed removable by the vendor unless stated otherwise and room sizes are measured between internal wall surfaces, including furnishings.