



FLAT 17, HIGH TREES MANSIONS, CRESCENT WOOD ROAD, LONDON, SE26
£300,000 LEASEHOLD

**ONE BEDROOM PERIOD FLAT LOCATED IN A
DELIGHTFUL PERIOD BUILDING!**

Forest Hill | | foresthill@winkworth.co.uk



DESCRIPTION:

****GUIDE PRICE £300,000 - £325,000****

Stylish one-bedroom period apartment in sought-after Upper Sydenham, set moments from Dulwich Woods and local parks. Beautifully presented throughout, featuring a spacious open-plan living area, modern kitchen, and sleek bathroom. Just 0.4 miles to Sydenham Hill Station, offering excellent links to central London. Close to East Dulwich, Crystal Palace, and Forest Hill for vibrant shops, cafes, and weekend markets.

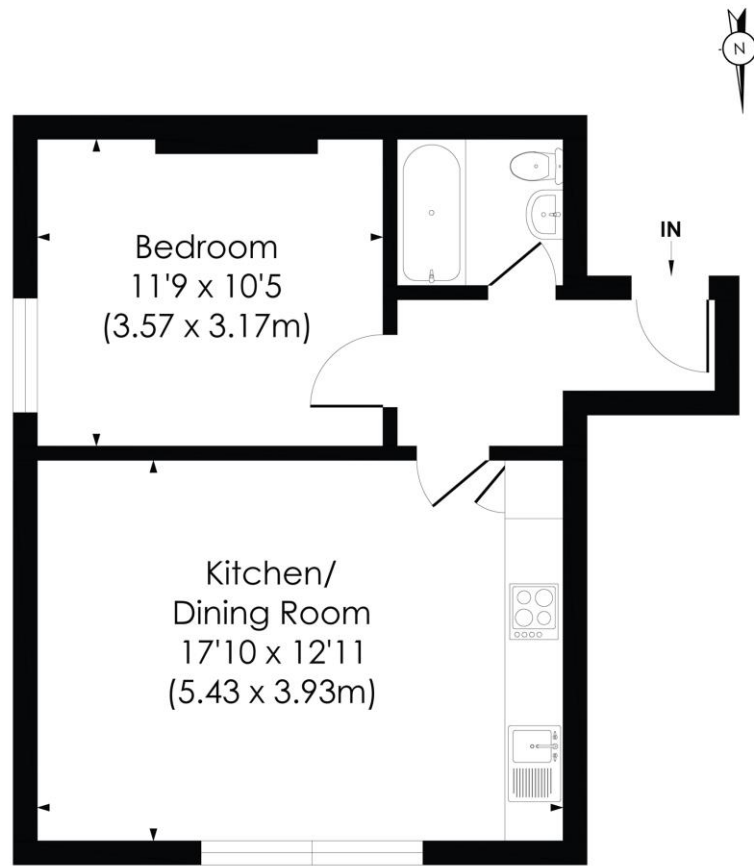




CRESCENT WOOD ROAD, SE26

Approx. Gross Internal Floor Area

438 Sq. ft/40.71 Sq. m



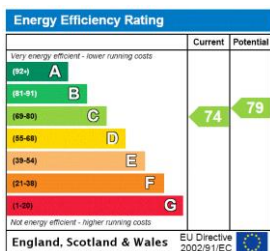
SECOND FLOOR

© Pixangle Property Marketing Ltd. info@pixangle.com Tel: 0208 870 2118

pixangle
PROPERTY MARKETING

This floor plan has been prepared for the purpose of illustration only in accordance with the latest RICS code of measuring practice and is not to scale. All measurements and areas are approximate and whilst every effort has been made to ensure the accuracy of the plan contained here, no responsibility is taken for any error, omission or misstatement.

This floorplan is for illustration purposes only and is not to scale. The position and size of doors, windows, appliances and other features are approximate.



Tenure: Leasehold

Term: 0 year and 0 months

Service Charge: £1768.56 per annum

Ground Rent: £ 200 Annually (subject to increase)

Council Tax Band:

Where no figures are shown, we have been unable to ascertain the information. All figures that are shown were correct at the time of printing.