



MILDMAY GROVE SOUTH, ISLINGTON, N1
£725 PER WEEK FURNISHED

A TRULY STUNNING THREE BEDROOM, TWO BATHROOM SPLIT LEVEL CONVERSION WITH PRIVATE SOUTH FACING GARDEN.

SUMMARY:

This exceptional split level apartment is arranged over the raised and lower ground of an attractive mid terrace Victorian conversion.

Spanning close to 1000 sq ft, the property is conveniently arranged with the splendid open plan kitchen reception area on the raised ground floor. Benefiting from high ceilings, large sash windows and original period features, this room is very much the centrepiece of this stunning property. The kitchen is fitted with high spec appliances and is beautifully finished. The bedrooms and bathrooms are arranged on the lower ground floor. The master bedroom is a very generous double and has a well designed en-suite bathroom. The second bedroom is a good double and again has its own en-suite bathroom. The third bedroom is a smaller double but can still accommodate a double bed as there is a recessed built in wardrobe.

Islington | 0207 354 2480 | islington@winkworth.co.uk

Tenant Fees Apply: Details of fees for tenant referencing, tenancy agreement admin fees and renewal fees are available on the Winkworth website and the link can be found with the displayed rent for the property. Tenants should ensure they are fully conversant with these upfront fees and other costs that are involved at the outset of the tenancy before making an offer to rent and your local Winkworth office will provide written details upon request.

winkworth.co.uk

Winkworth

See things differently

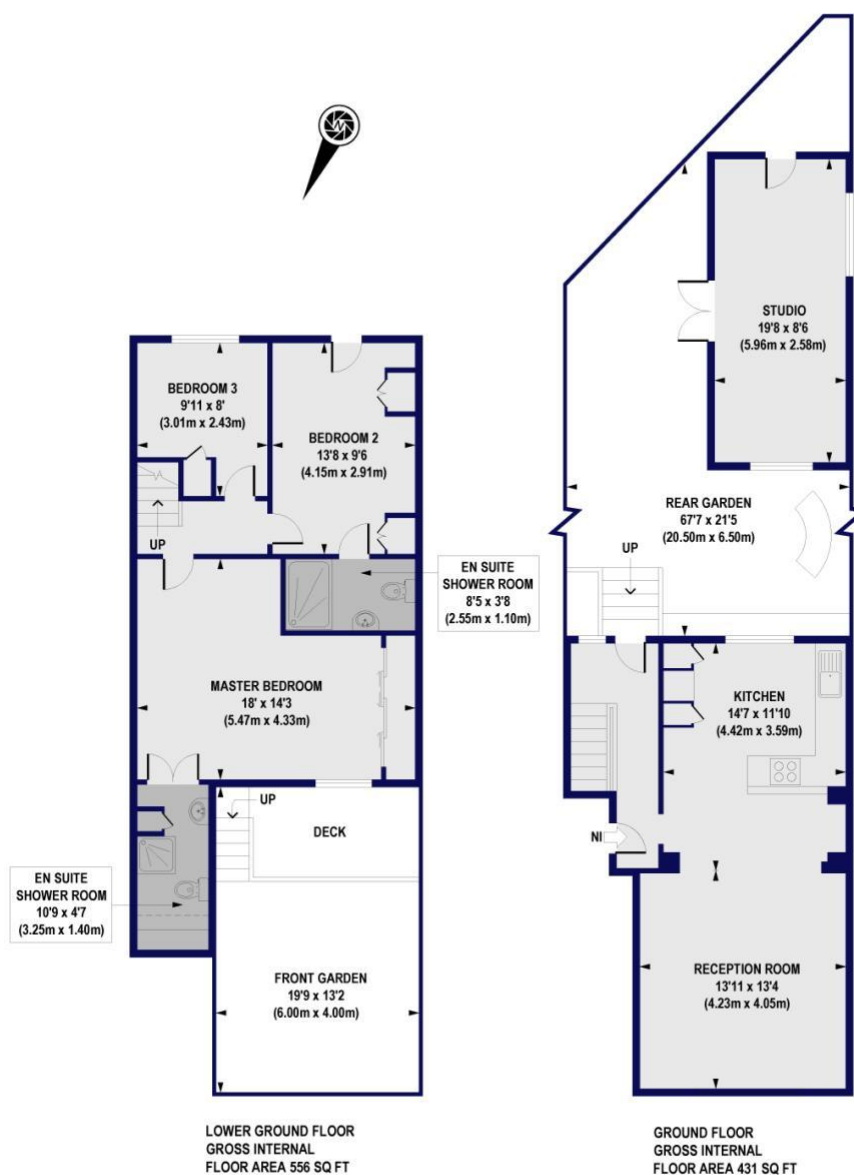




ACCOMMODATION

Long Let, 3 Bedrooms, 1 Reception Room, 2 Bathrooms, Flat/Apartment, Basement, Ground Floor, Garden, Patio, Period, Furnished, 987 Approx Sq Ft

Mildmay Grove South, N1
Approx. Gross Internal Floor Area 987 sq. ft / 91.71 sq. m
(Excluding Studio)



All measurements of walls, doors, windows, fittings and appliances, including their size and location, are shown as standard sizes and do not constitute any warranty or representation by the seller, their agent or CP Creative. Any intending purchaser must satisfy himself by inspection or otherwise as to the correctness of the information contained in these plans. This plan is for illustrative purposes only and should be used as such by any prospective purchasers.

Winkworth

This floorplan is for illustration purposes only and is not to scale. The position and size of doors, windows, appliances and other features are approximate.

Islington | 0207 354 2480 | islington@winkworth.co.uk

Winkworth

winkworth.co.uk

See things differently

Winkworth wishes to inform prospective buyers and tenants that these particulars are a guide and act as information only. All our details are given in good faith and believed to be correct at the time of printing but they don't form part of an offer or contract. No Winkworth employee has authority to make or give any representation or warranty in relation to this property. All fixtures and fittings, whether fitted or not are deemed removable by the vendor unless stated otherwise and room sizes are measured between internal wall surfaces, including furnishings.