



MANOR PARK, HITHER GREEN, SE13 5RL
£325,000 LEASEHOLD

LOCATED ON THE LOWER GROUND FLOOR OF THIS IMPRESSIVE DOUBLE FRONTED DETACHED VICTORIAN HOUSE, IS THIS BEAUTIFUL ONE DOUBLE BEDROOM APARTMENT LOCATED CLOSE TO HITHER GREEN STATION AND MANOR HOUSE GARDENS.

Blackheath | 0208 8520999 | blackheath@winkworth.co.uk

Winkworth

winkworth.co.uk

See things differently



DESCRIPTION:

The property is in excellent decorative order with stripped floorboards, gas central heating and double glazed windows with plantation shutters.

The accommodation comprises; a large 15'7 x 11'7 reception room, a separate and superb recently fitted modern kitchen with quartz worktops, master bedroom with large built-in wardrobes and a lovely modern bathroom. To the rear is a huge communal garden.

This is a lovely apartment and early viewing is a must. Video tour can be seen at winkworth.co.uk

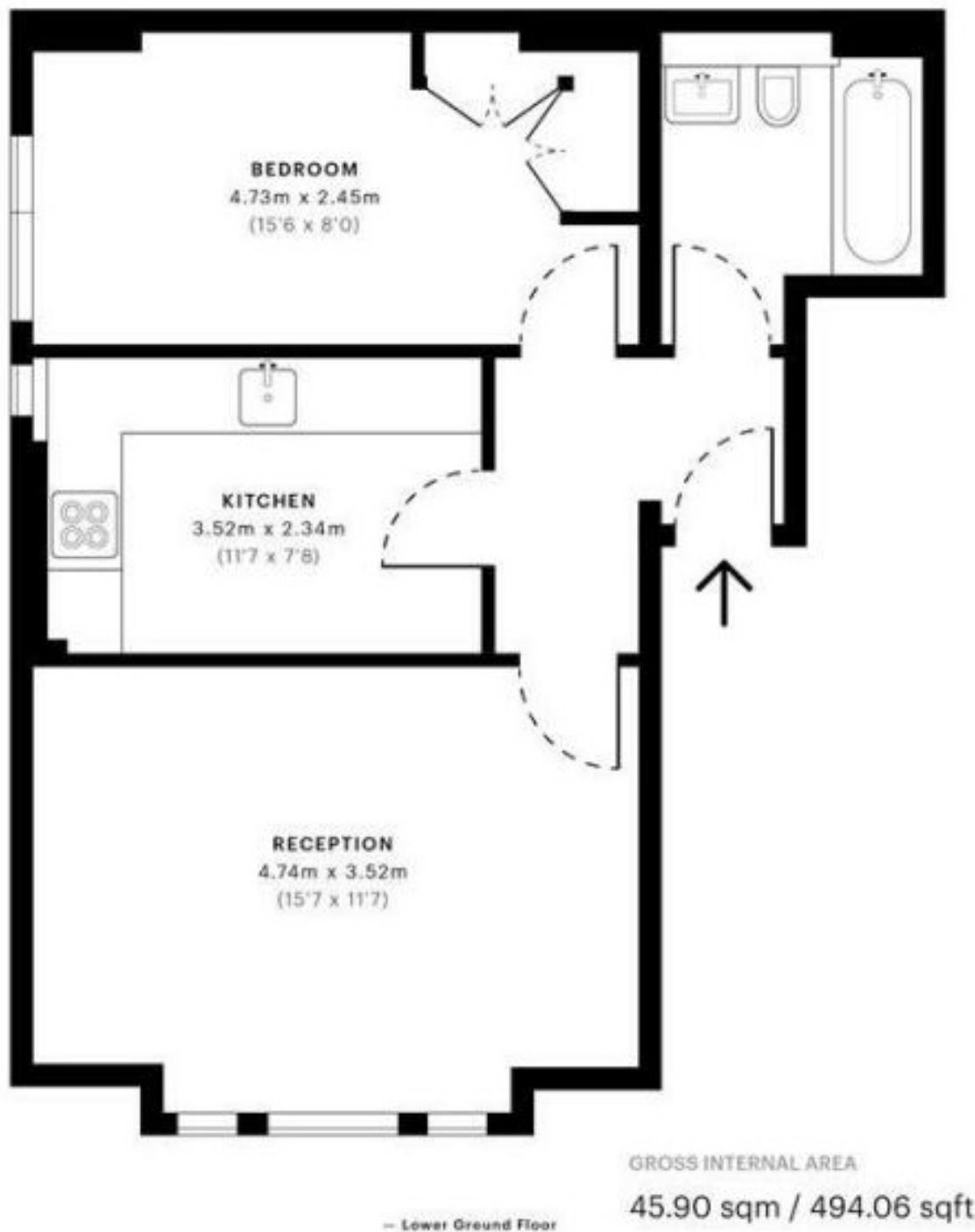
Manor Park is a fantastic location very close to Manor House Gardens and Manor Park. Hither Green Station is a 5 minute walk. Adjacent shops include a Sainsbury's Local, acclaimed florist and café You Don't Bring Me Flowers, Italian restaurant and pizzeria Sapore Vero, craft beer and chocolate shop Park Fever and gastropub The Station Hotel. Travel time to London Bridge is 11 minutes from Hither Green Station, which also services Charing Cross, London Cannon Street, Waterloo East and Victoria. Lewisham Station (DLR) is a 17 minute walk, while Blackheath is a 25 minute walk.

AT A GLANCE

- period conversion
- beautifully presented
- one double bedroom
- luxury kitchen
- lower ground floor
- communal garden
- very close to station
- very close to parks







This floorplan is for illustration purposes only and is not to scale. The position and size of doors, windows, appliances and other features are approximate. Any lease and service charge details have been provided by the vendor. Any interest party should have these checked by a solicitor as part of the purchase process.

