



27 HARDING PLACE, WOKINGHAM, BERKSHIRE, RG40 1BX
£465,000 FREEHOLD

Winkworth



HARDING PLACE

Situated within walking distance of Wokingham town centre and all its amenities, this 2 bedroom house in Harding Place is designed for independent living for the over 55's.

You enter the property into the hallway of this superb property which leads you through to the downstairs cloakroom by the front door, stairs to the first floor and living room. The living room is light and airy opening up to the conservatory. The kitchen has been beautifully maintained and offers ample work surfaces.

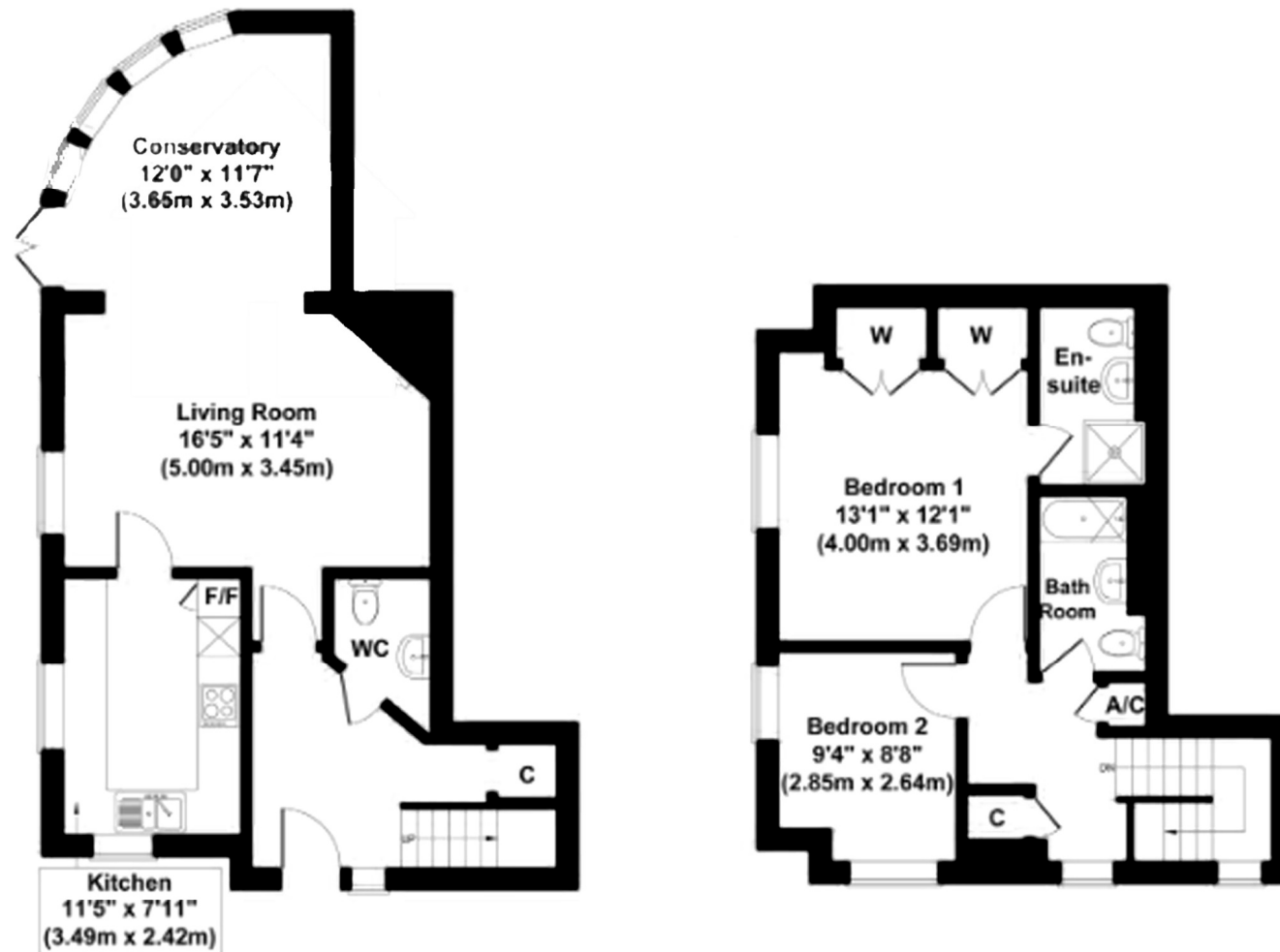
On the first floor there is a light and airy landing which provides space for a study/hobby area. There are 2 double bedrooms, both with built in storage, and an en suite to the master. Rounding off the accommodation is the main bathroom.

Surrounding the property are well manicured gardens with one allocated resident's parking space and further visitor parking.

EPC: To be confirmed







Approx. Gross Internal Floor Area 984 sq. ft. (91.4 sq. m.)

SKETCH PLAN FOR ILLUSTRATIVE PURPOSES ONLY

All measurements walls, doors, windows, fittings and appliances,
their sizes and locations, are approximate only.

They cannot be regarded as being a representation by the seller, nor their agent.

Wokingham | 01189 072777 | wokingham@winkworth.co.uk

Winkworth

Winkworth wishes to inform prospective buyers and tenants that these particulars are a guide and act as information only. All our details are given in good faith and believed to be correct at the time of printing but they don't form part of an offer or contract. No Winkworth employee has authority to make or give any representation or warranty in relation to this property. All fixtures and fittings, whether fitted or not are deemed removable by the vendor unless stated otherwise and room sizes are measured between internal wall surfaces, including furnishings.