



RADDINGTON ROAD, W10  
**£1,895 PER WEEK**

**Winkworth**





## RADDINGTON ROAD, W10

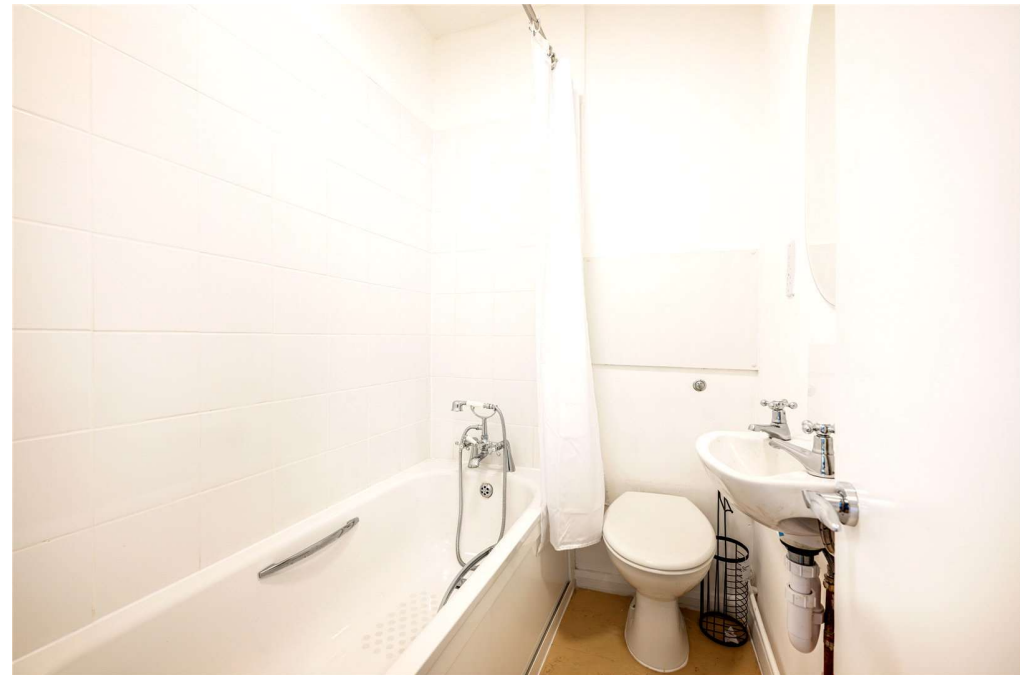
Recently refurbished throughout, this beautifully presented split-level one-bedroom apartment occupies the second floor of an elegant period building on a quiet, tree-lined residential street. The property offers a bright and generously sized reception room with ample space for dining, a stylish contemporary fitted kitchen, and a peaceful double bedroom, all enhanced by fresh décor and thoughtful modern touches.

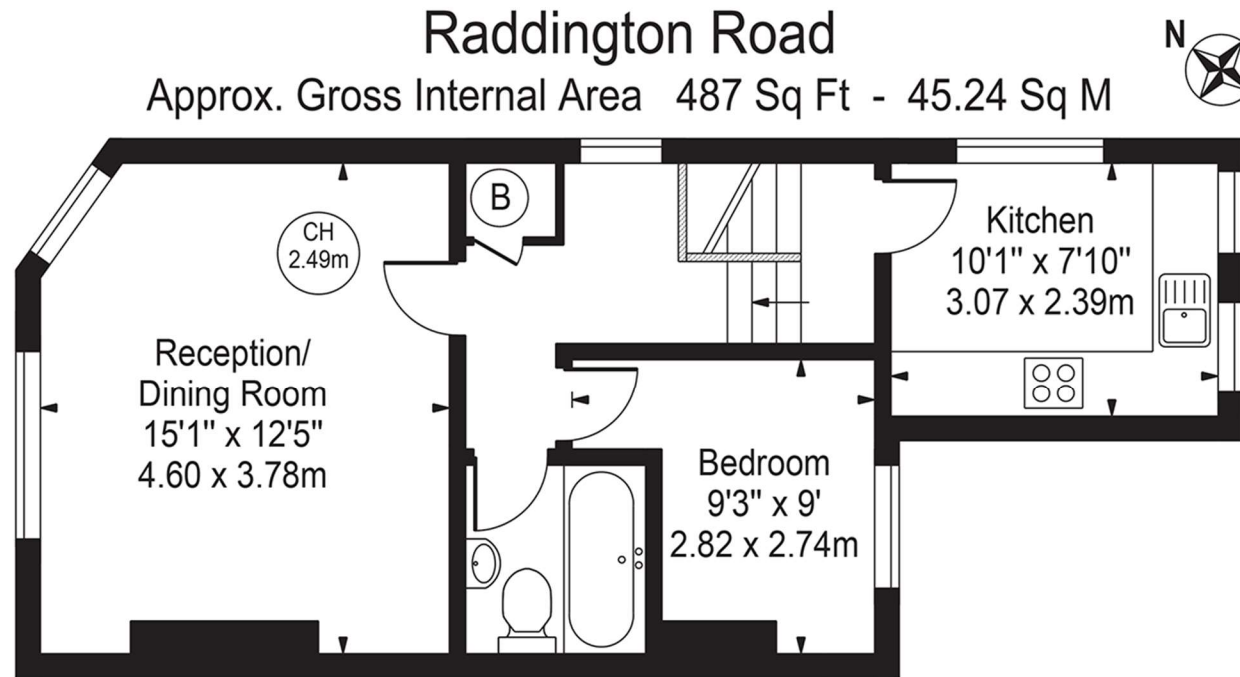
Council Tax Band: C

### LOCATION

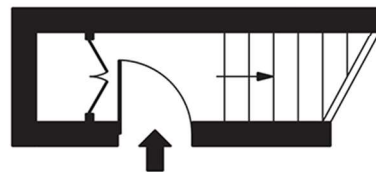
Perfectly positioned in one of North Kensington's most sought-after pockets, Raddington Road places you just moments from the lively atmosphere of Portobello Road and Golborne Road. Here, you'll find an eclectic mix of independent boutiques, artisan cafés, vibrant street markets, and renowned antique stalls. The nearby Ladbroke Grove area adds to the appeal, offering a multicultural blend of unique restaurants, coffee shops, and characterful furniture stores—capturing the essence of modern urban living in West London.







**Second Floor**  
(460 Sq Ft - 42.74 Sq M)



**First Floor Entrance**  
(27 Sq Ft - 2.51 Sq M)

For Illustration Purposes Only - Not To Scale

This floor plan should be used as a general outline for guidance only and does not constitute in whole or in part an offer or contract.  
Any intending purchaser or lessee should satisfy themselves by inspection, searches, enquiries and full survey as to the correctness of each statement  
Any areas, measurements or distances quoted are approximate and should not be used to value a property or be the basis of any sale or let.

Copyright Morriarti Photography & Design LTD

Score	Energy rating	Current	Potential
92+	A		
81-91	B		
69-80	C	75 C	81 B
55-68	D		
39-54	E		
21-38	F		
1-20	G		

North Kensington | 020 7792 5000 | northkensington@winkworth.co.uk

winkworth.co.uk

Winkworth wishes to inform prospective buyers and tenants that these particulars are a guide and act as information only. All our details are given in good faith and believed to be correct at the time of printing but they don't form part of an offer or contract. No Winkworth employee has authority to make or give any representation or warranty in relation to this property. All fixtures and fittings, whether fitted or not are deemed removable by the vendor unless stated otherwise and room sizes are measured between internal wall surfaces, including furnishings.

**Winkworth**