

MEARS CLOSE, LONDON, E1
£525,000 LEASEHOLD

STYLISH 2 BED APARTMENT IN GATED DEVELOPMENT IN WHITECHAPEL

Shoreditch | 020 7749 7650 | shoreditch@winkworth.co.uk

Winkworth

winkworth.co.uk

See things differently



DESCRIPTION:

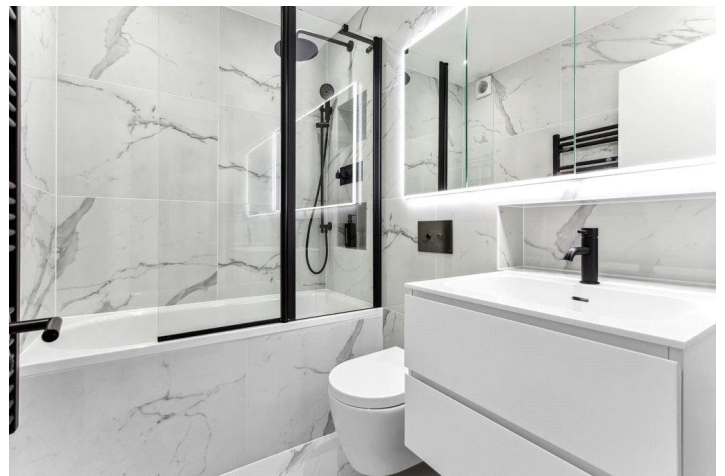
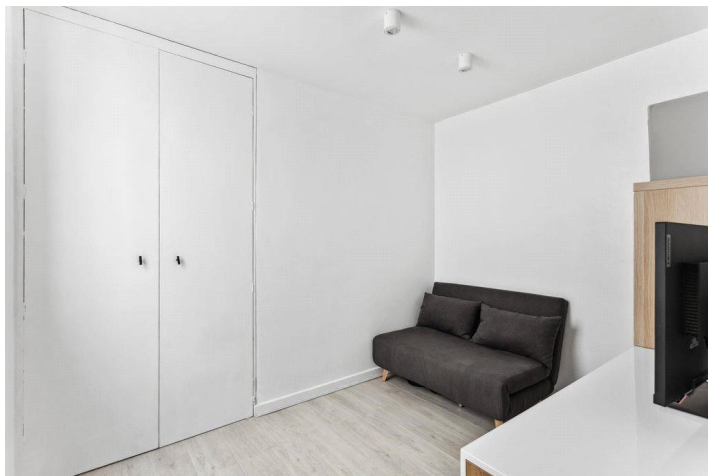
Situated within a quiet, gated development on Mears Close, E1, this modern two-bedroom, one-bathroom flat offers stylish and well-proportioned living in a prime East London location. The property is beautifully presented, featuring a bright open-plan reception and kitchen area with large windows that allow natural light to flood the space. The contemporary kitchen is fully fitted with integrated appliances and sleek cabinetry, ideal for both everyday living and entertaining.

Both bedrooms are spacious and neutrally decorated, providing comfortable and flexible accommodation. The bathroom is finished to a high standard, with modern fixtures, elegant tiling and a full-sized bath with overhead shower.

Set within a well-maintained gated development, the flat offers a peaceful residential feel while being moments from the vibrant heart of East London. Excellent amenities can be found nearby along Commercial Road and Whitechapel High Road, including shops, cafes, restaurants, and supermarkets. The area is exceptionally well connected, with Stepney Green, Whitechapel and Bethnal Green stations all within easy reach, providing swift access to the City, Canary Wharf and the West End.

This is an ideal home for first-time buyers, professionals or investors looking for a contemporary property in one of East London's most dynamic and fast-developing neighbourhoods.

Winkworth



Winkworth

Mears Close, E1
Approx. Gross Internal Floor Area 676 sq. ft / 62.82 sq. m



GROUND FLOOR

All measurements of walls, doors, windows, fittings and appliances, including their size and location, are shown as standard sizes and do not constitute any warranty or representation by the seller, their agent or CP Creative. Any intending purchaser must satisfy himself by inspection or otherwise as to the correctness of the information contained in these plans. This plan is for illustrative purposes only and should be used as such by any prospective purchasers.

Winkworth

This floorplan is for illustration purposes only and is not to scale. The position and size of doors, windows, appliances and other features are approximate.

Score	Energy rating	Current	Potential
92+	A		
81-91	B	81 B	85 B
69-80	C		
55-68	D		
39-54	E		
21-38	F		
1-20	G		

Shoreditch | 020 7749 7650 | shoreditch@winkworth.co.uk

Winkworth

winkworth.co.uk

See things differently

Winkworth wishes to inform prospective buyers and tenants that these particulars are a guide and act as information only. All our details are given in good faith and believed to be correct at the time of printing but they don't form part of an offer or contract. No Winkworth employee has authority to make or give any representation or warranty in relation to this property. All fixtures and fittings, whether fitted or not are deemed removable by the vendor unless stated otherwise and room sizes are measured between internal wall surfaces, including furnishings.